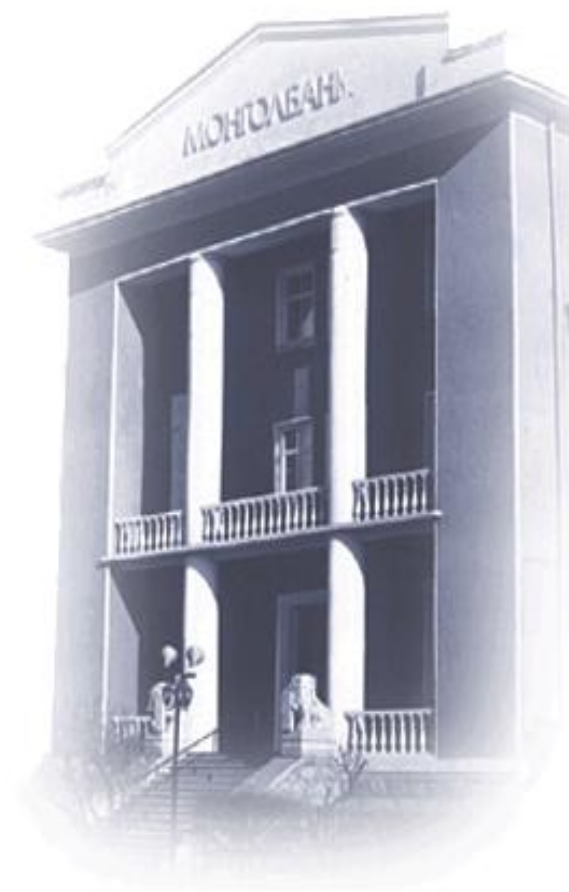


**МОНГОЛБАНК**  
**Статистикийн Сарын Бюллетень**



**BANK OF MONGOLIA**  
**Monthly Statistical Bulletin**

**2010-12**

**Мөнгөний нийлүүлэлт**  
**Money supply**

сая төгрөг  
in millions of togrogs

Хугацааны эцэст End-of-period	Гүйлгээнд гаргасан бэлэн мөнгө		Үүнээс			Мөнгө (M1)		Үүнээс
	Currency issued in circulation		Of which			Money (M1)		Of which
	дүн amount	сарын өөрчлөлт monthly changes %	Касст байгаа мөнгө Bank's vault	Банкнаас гадуурх мөнгө Currency outside banks		дүн amount	сарын өөрчлөлт monthly changes %	Төгрөгийн харилцах Current account in DC
			дүн amount	сарын өөрчлөлт monthly changes %				
1990 12	742.7		5.7	737.0		4,749.9		3,915.9
1991 12	2,003.0		308.7	1,694.3		7,313.7		5,592.1
1992 12	2,896.4		1,057.2	1,839.2		7,640.2		5,789.8
1993 12	10,786.1	13.2	2,035.5	8,750.6	12.0	18,548.4	-8.8	9,757.2
1994 12	21,804.8	3.1	3,037.6	18,767.2	5.7	32,871.2	-0.4	14,104.0
1995 09	29,703.2	1.7	4,668.5	25,034.7	3.6	41,893.7	-4.6	16,859.0
1995 12	29,755.7	0.8	4,164.5	25,591.2	2.6	42,636.5	-0.4	17,045.3
1996 12	46,095.8	11.8	4,391.4	41,704.4	14.4	64,301.6	14.7	22,597.2
1997 12	56,816.5	3.1	7,048.2	49,768.3	4.1	76,108.9	4.0	26,340.6
1998 12	61,754.2	5.7	5,308.4	56,445.8	9.2	82,582.0	9.4	26,136.2
1999 12	91,567.5	13.8	4,286.2	87,281.3	15.2	114,825.7	14.9	27,544.4
2000 12	107,394.4	7.8	6,461.0	100,933.4	7.3	130,775.0	8.9	29,841.6
2001 12	119,205.8	5.7	10,045.1	109,160.7	8.2	156,155.3	6.9	46,994.6
2002 12	134,642.8	0.5	13,859.2	120,783.6	1.2	187,727.8	6.9	66,944.1
2003 12	152,826.6	1.1	21,329.9	131,496.7	-2.1	212,833.4	4.4	81,336.7
2004 12	168,521.1	1.7	25,008.4	143,512.7	3.9	221,327.6		77,814.9
03	159,797.2	7.4	27,083.3	132,713.9	14.1	213,357.6	8.2	80,643.7
06	203,835.2	4.2	27,068.9	176,766.3	6.7	277,664.4	8.7	100,898.0
09	206,623.7	-5.7	32,209.1	174,414.6	-7.9	273,522.2	-6.7	99,107.6
2005 12	191,688.3	3.1	39,318.8	152,369.5	-0.4	269,124.4	6.3	116,754.9
03	186,511.1	10.5	41,702.2	144,808.9	11.5	274,375.7	4.7	129,566.8
06	241,313.2	1.0	43,134.4	198,178.9	1.6	328,612.9	0.7	130,434.0
09	239,477.2	-5.3	50,129.8	189,347.4	-7.3	331,262.5	-3.4	141,915.1
2006 12	245,098.9	5.1	59,972.2	185,126.7	2.6	331,903.4	2.1	146,776.7
03	264,875.0	18.0	48,718.8	216,156.2	28.9	401,498.6	17.2	185,342.4
06	319,860.0	-0.9	57,436.6	262,423.4	-1.9	502,223.4	2.4	239,800.0
09	333,389.7	-5.2	66,068.5	267,321.2	-7.9	515,432.2	-3.7	248,111.1
2007 12	364,074.4	12.5	80,749.1	283,325.3	8.2	590,471.6	13.6	307,146.3
03	328,462.5	5.9	71,780.7	256,681.7	4.6	577,707.5	5.2	321,025.8
06	387,718.8	3.8	79,928.0	307,790.8	1.3	624,894.1	0.7	317,103.3
09	361,057.2	-8.7	74,911.2	286,146.0	-11.5	603,473.3	-6.0	317,327.3
2008 12	407,210.5	23.0	78,486.5	328,724.0	25.0	647,335.3	18.1	318,611.3
03	338,280.4	-14.9	65,679.7	272,600.7	-10.8	511,386.8	-7.0	238,786.1
06	357,754.2	-6.1	73,955.4	283,798.8	-7.9	544,382.1	-2.6	260,583.2
09	363,478.7	-5.4	81,061.0	282,417.7	-6.0	622,707.3	4.3	340,289.6
2009 12	371,831.9	2.2	86,838.0	284,993.9	2.3	651,247.0	8.4	366,253.2
01	350,828.3	-5.6	90,323.6	260,504.7	-8.6	629,701.0	-3.3	369,196.2
02 <sup>1</sup>	352,347.5	0.4	94,173.2	258,174.4	-0.9	627,897.5	-0.3	369,723.1
03	384,484.6	9.1	90,156.6	294,328.0	14.0	693,003.0	10.4	398,675.0
04	444,973.7	15.7	105,321.0	339,652.7	15.4	754,299.9	8.8	414,647.2
05	462,669.7	4.0	105,800.2	356,869.5	5.1	795,971.6	5.5	439,102.1
06	447,442.0	-3.3	98,536.3	348,905.7	-2.2	839,932.0	5.5	491,026.3
07	452,341.7	1.1	107,858.0	344,483.7	-1.3	826,662.4	-1.6	482,178.7
08	467,523.0	3.4	112,967.6	354,555.4	2.9	932,036.2	12.7	577,480.8
09	452,599.2	-3.2	108,822.1	343,777.0	-3.0	959,096.3	2.9	615,319.2
10	462,234.4	2.1	109,499.2	352,735.2	2.6	1,000,575.4	4.3	647,840.2
11	472,914.7	2.3	122,275.7	350,639.0	-0.6	995,746.4	-0.5	645,107.4
2010 12	519,692.4	9.9	131,489.8	388,202.7	10.7	1,157,617.9	16.3	769,415.2

<sup>1</sup> Тухайн сард хадгаламж зээлийн хориооны үзүүлэлтийг нэгтгэж тооцов

<sup>1</sup> Data of Savings and Credit Unions was included in Broad Money calculation

**Монгоний нийлүүлэлт**  
**Money supply**

үргэлжлэл  
continued

Хугацааны эцэст End-of-period	Бараг мөнгө Quasi money		Үүнээс Of which				Мөнгө (M2) Money (M2)		
	дүн amount	сарын өөрчлөлт monthly changes %	Төгрөгийн хадгаламж Domestic currency deposits	Үүнээс Of which		Гадаад валютын хадгаламж Foreign currency deposits	Гадаад валютын харилцах Current account (For.currency)	дүн amount	сарын өөрчлөлт monthly changes %
				Иргэдийн Individuals	Байгуул- лагын Corporate				
1990 12	883.2		726.3	726.3	-	157.0		5,633.1	
1991 12	2,601.1		1,996.9	1,553.3	443.6	604.2		9,914.8	
1992 12	5,412.1		4,430.2	2,985.7	1,444.5	112.5	869.4	13,052.3	
1993 12	24,215.8	10.6	10,103.1	7,969.6	2,133.5	2,378.0	11,734.7	42,764.2	1.2
1994 12	43,905.8	-2.6	28,937.5	25,287.3	3,650.2	3,474.1	11,494.2	76,777.0	-1.7
1995 09	62,986.3	8.5	38,070.1	35,188.9	2,881.2	11,528.6	13,387.6	104,880.0	2.8
1995 12	59,408.1	-4.7	38,529.1	36,602.7	1,926.4	8,233.1	12,645.9	102,044.6	-2.9
1996 12	64,093.7	-4.0	35,164.2	33,819.1	1,345.1	11,006.8	17,922.7	128,395.3	4.5
1997 12	93,956.6	13.0	44,673.8	42,892.7	1,781.1	13,795.6	35,487.2	170,065.5	8.8
1998 12	84,667.6	-0.5	44,840.1	42,044.5	2,795.6	14,468.6	25,358.9	167,249.6	4.2
1999 12	105,341.3	-1.6	45,052.3	43,257.9	1,794.4	24,925.9	35,363.2	220,167.0	6.3
2000 12	128,067.7	2.1	59,004.3	54,125.9	4,878.4	33,681.9	35,381.5	258,842.6	5.4
2001 12	174,908.9	3.0	87,590.4	79,321.6	8,268.7	47,017.1	40,301.5	331,064.3	4.8
2002 12	282,397.8	3.8	147,211.7	137,182.7	10,029.0	71,147.8	64,038.2	470,125.6	5.0
2003 12	490,499.0	15.8	240,280.1	228,133.5	12,146.6	123,253.9	126,965.0	703,332.4	12.1
2004 12	625,704.9	-0.2	300,976.4	287,894.4	13,082.0	216,434.0	108,294.5	847,032.4	0.9
03	679,616.2	2.5	347,514.7	325,127.1	22,387.6	215,566.3	116,535.1	892,973.8	3.8
06	731,924.1	2.1	371,051.0	346,587.8	24,463.2	219,213.0	141,660.1	1,009,588.5	3.9
09	838,852.7	6.5	402,581.0	367,789.8	34,791.2	244,643.2	191,628.5	1,112,374.9	2.9
2005 12	871,014.4	1.6	426,033.6	399,980.0	26053.6*	245,675.0	199,305.8	1140138.8*	2.7
03	916,865.6	3.8	477,315.2	445,639.2	31,676.1	247,707.4	191,842.9	1,191,241.3	4.0
06	1,120,923.4	4.1	528,741.6	498,240.6	30,501.0	382,789.2	209,392.6	1,449,536.2	3.3
09	1,208,172.2	5.3	586,458.1	550,111.8	36,346.3	396,934.5	224,779.5	1,539,434.7	3.3
2006 12	1,204,590.0	-4.5	692,483.4	647,774.2	44,709.3	302,921.7	209,184.9	1,536,493.3	-3.1
03	1,345,255.8	4.7	835,676.4	786,524.9	49,151.5	287,407.4	222,172.0	1,746,754.4	7.3
06	1,513,866.8	2.6	944,032.3	872,878.8	71,153.5	316,914.4	252,920.0	2,016,090.2	2.5
09	1,676,505.5	1.0	1,031,160.0	935,610.7	95,549.4	350,625.3	294,720.1	2,191,937.7	-0.2
2007 12	1,810,778.1	5.6	1,113,729.7	1,014,880.8	98,848.9	375,987.2	321,061.2	2,401,249.7	7.4
03	1,877,439.7	0.5	1,149,303.5	1,065,250.8	84,052.8	422,249.3	305,886.9	2,455,147.2	1.6
06	1,939,790.0	2.3	1,092,859.0	986,760.4	106,098.7	456,723.0	390,208.0	2,564,684.1	1.9
09	1,921,537.3	-0.7	1,111,986.0	982,604.1	129,381.9	451,975.6	357,575.8	2,525,010.7	-2.0
2008 12	1,622,666.1	-4.2	898,692.5	829,539.3	69,153.1	440,199.5	283,774.2	2,270,001.4	1.3
03	1,841,171.2	4.3	966,546.7	890,798.6	75,748.1	526,807.9	347,816.7	2,352,558.1	1.6
06	1,894,865.5	2.7	982,461.0	921,066.3	61,394.8	568,226.2	344,178.2	2,439,247.6	1.4
09	2,030,707.4	3.2	1,072,211.9	1,004,645.2	67,566.7	580,759.1	377,736.4	2,653,414.7	3.5
2009 12	2,228,786.8	5.4	1,234,289.7	1,125,607.8	108,681.9	622,133.6	372,363.5	2,880,033.9	6.1
01	2,241,310.1	0.6	1,240,788.9	1,139,173.9	101,614.9	607,118.3	393,402.9	2,871,011.1	-0.3
02 <sup>1</sup>	2,353,955.3	5.0	1,366,290.1	1,264,587.7	101,702.3	592,424.6	395,240.6	2,981,852.7	3.9
03	2,281,480.3	-3.1	1,374,391.0	1,281,022.3	93,368.8	550,546.3	356,542.9	2,974,483.3	-0.2
04	2,408,657.9	5.6	1,363,602.5	1,264,842.2	98,760.2	609,930.8	435,124.7	3,162,957.8	6.3
05	2,458,107.6	2.1	1,411,151.3	1,314,434.6	96,716.7	601,651.7	445,304.6	3,254,079.2	2.9
06	2,683,675.2	9.2	1,467,080.2	1,376,782.3	90,297.9	602,923.0	613,672.0	3,523,607.2	8.3
07	2,716,472.8	1.2	1,528,049.7	1,427,431.8	100,617.9	626,028.2	562,394.9	3,543,135.2	0.6
08	2,725,373.0	0.3	1,553,856.7	1,444,402.0	109,454.7	610,734.0	560,782.3	3,657,409.2	3.2
09	2,892,619.1	6.1	1,610,067.7	1,500,538.0	109,529.7	664,484.0	618,067.3	3,851,715.3	5.3
10	2,872,484.9	-0.7	1,656,273.0	1,547,737.4	108,535.6	647,780.3	568,431.6	3,873,060.3	0.6
11	2,953,792.9	2.8	1,759,160.8	1,641,120.7	118,040.1	631,437.6	563,194.5	3,949,539.3	2.0
2010 12	3,522,363.5	19.6	2,001,596.0	1,835,395.4	166,200.6	754,620.1	766,147.4	4,679,981.4	18.8

<sup>1</sup> Тухайн сард хадгаламж эзэлийн хориооны үзүүлэлтийг нэгтгэж тооцож

<sup>1</sup> Data of Savings and Credit Unions was included in Broad Money calculation

**Хадгаламжийн байгууллагуудын мөнгөний тойм**  
**Deposit Corporations Monetary Survey**

сая төгрөг  
in millions of togrogs

Хугацааны эцэст <i>End-of-period</i>	Гадаад цэвэр актив <i>Net foreign assets</i>	Дотоодын ээл (цэвэр) <i>Domestic credit (net)</i>	Үүнээс Of which		
			Засгийн газар  <i>General Government</i>	Үүнээс: Of which:	
				Төв Засгийн газар <i>Central Government</i>	Орон нутгийн төсөв <i>Local Government</i>
1991 12	495.4	10,971.2	-1,883.7		
1992 12	-27.0	16,078.2	-3,051.7		
1993 12	23,395.7	24,460.3	-7,143.4		
1994 12	29,699.3	49,190.3	-3,773.1		
1995 09	42,796.8	49,646.7	-14,688.9		
1995 12	51,709.7	45,494.7	-17,227.8		
1996 12	73,733.6	90,240.4	19,920.3		
1997 12	135,437.2	67,635.4	13,352.1		
1998 12	96,557.5	136,062.0	41,460.0		
1999 12	167,541.5	116,635.6	34,555.7		
2000 12	201,696.9	84,831.1	17,171.2		
2001 12	220,165.7	129,259.5	-6,829.1		
2002 12	308,507.4	200,027.4	-32,439.3		
2003 12	256,341.5	514,615.2	96,687.3		
2004 12	311,005.2	647,305.1	40,506.5	45,022.0	-4,515.6
03	355,953.1	656,792.2	15,718.6	21,303.2	-5,584.6
06	398,458.6	722,028.0	1,353.7	6,891.6	-5,537.9
09	506,890.1	737,705.6	-37,364.2	-32,586.6	-4,777.7
2005 12	570,198.7	769,004.6 <sup>2</sup>	-90,847.2	-87,822.4	-3,024.9
03	576,426.1	837,634.7	-114,042.7	-110,040.3	-4,002.4
06	819,508.4	866,442.9	-184,466.7	-178,133.0	-6,333.7
09	973,853.2	816,958.7	-303,950.9	-297,407.6	-6,543.2
2006 12	1,131,772.5	745,404.8	-477,882.5	-470,640.1	-7,242.4
03	1,174,464.0	858,887.2	-545,685.9	-537,827.8	-7,858.1
06	1,316,665.5	977,750.0	-622,470.7	-611,969.3	-10,501.3
09	1,409,522.6	1,091,172.3	-767,948.6	-756,170.4	-11,778.2
2007 12	1,352,046.2	1,329,532.9	-726,528.0	-719,606.1	-6,921.9
03	1,297,695.4	1,603,434.8	-732,494.0	-724,161.0	-8,333.0
06	1,223,350.9	1,753,657.0	-805,776.0	-794,838.7	-10,937.3
09	1,035,442.0	1,928,681.0	-788,177.6	-776,727.4	-11,450.2
2008 12	683,478.2	2,061,976.5	-573,575.1	-566,471.1	-7,104.0
03	696,315.7	2,169,795.5	-501,931.0	-495,236.0	-6,695.0
06	944,242.6	1,977,766.1	-581,163.6	-574,386.6	-6,777.1
09	1,250,760.3	1,930,001.0	-700,933.7	-690,570.6	-10,363.0
2009 12 <sup>1</sup>	1,533,276.9	1,937,874.3	-717,126.1	-709,477.0	-7,649.1
01	1,550,130.5	1,989,667.8	-684,776.7	-676,642.2	-8,134.5
02 <sup>2</sup>	1,569,449.4	2,096,576.2	-619,174.9	-611,919.4	-7,255.5
03	1,442,263.2	2,139,661.1	-628,887.2	-623,329.0	-5,558.2
04	1,651,486.3	2,079,478.2	-685,392.9	-677,573.6	-7,819.4
05	1,644,686.8	2,184,974.2	-667,743.2	-660,415.8	-7,327.4
06	1,801,207.9	2,283,798.6	-598,830.8	-591,589.6	-7,241.2
07	1,801,553.6	2,302,072.3	-669,921.0	-660,553.5	-9,367.5
08	1,921,080.2	2,256,881.9	-765,162.7	-757,056.4	-8,106.3
09	2,099,024.3	2,298,844.8	-786,507.3	-778,518.8	-7,988.5
10	2,120,248.5	2,253,429.7	-836,860.8	-829,641.2	-7,219.6
11	2,198,129.5	2,226,214.9	-886,279.3	-877,717.7	-8,561.7
2010 12	2,739,285.7	2,429,981.1	-834,796.9	-828,917.2	-5,879.7

<sup>1</sup> 2008 оны 12-р сараас эхлэн ОУВС-ийн ЯБХД хөтөлбөрийн зээлийн тооцоог ЗГ-аас авах авлагад оруулж тооцов.

<sup>1</sup> From December 2008 the Settlement on PRGF loan was included in Net Domestic Credit, particularly in Claims on Government

<sup>2</sup> Тухайн сард хадгаламж зээлийн хоршооны үзүүлэлтийг нэгтгэж тооцов

<sup>2</sup> Data of Savings and Credit Unions was included in Broad Money calculation

**Хадгаламжийн байгууллагуудын мөнгөний тойм**  
**Deposit Corporations Monetary Survey**

үргэлжлэл  
*continued*

Хугацааны эцэст <i>End-of-period</i>							Нийт актив <i>Total assets</i>
	Бусад санхүүгийн байгууллага  <i>Other financial corporations</i>	Улсын сектор  <i>Public sector</i>	Хувийн сектор  <i>Private sector</i>	Иргэд  <i>Individuals</i>	Бусад  <i>Other</i>	Анги- лагддаггүй зээл <i>Unclassified loans</i>	
1991 12		9,779.6	3,075.3			0.0	11,466.6
1992 12		12,204.2	6,925.7			0.0	16,051.2
1993 12		21,744.4	9,859.3			0.0	47,856.0
1994 12		12,193.3	40,638.0			132.1	78,889.6
1995 09		8,892.2	55,297.8			145.6	92,443.5
1995 12		10,883.3	51,653.5			185.7	97,204.4
1996 12		14,520.3	22,851.9			32,947.9	163,974.0
1997 12		11,713.0	28,112.6			14,457.7	203,072.6
1998 12		18,295.6	43,667.5			32,638.9	232,619.5
1999 12		8,564.5	31,408.6			42,106.7	284,177.1
2000 12		6,281.5	45,482.9			15,895.6	286,528.0
2001 12		10,402.0	114,670.4			11,016.2	349,425.2
2002 12		12,184.9	203,567.2			16,714.5	508,534.8
2003 12		16,203.6	365,024.4			36,700.0	770,956.7
2004 12	455.1	13,125.7	365,057.9	210,931.1	17,228.9		958,310.2
03	491.4	13,868.3	376,332.2	233,706.2	16,675.5		1,012,745.3
06	1,587.0	22,295.2	418,590.5	262,786.4	15,415.3		1,120,486.6
09	807.1	21,194.9	442,998.2	294,561.9	15,507.7		1,244,595.8
2005 12	498.8	34,169.2	489,064.7	321,606.8	14,512.4		1,339,203.3
03	946.3	29,158.7	544,639.2	363,811.0	13,122.3		1,414,060.8
06	1,221.9	29,816.4	590,566.2	413,244.1	16,061.0		1,685,951.3
09	1,517.7	32,749.0	607,338.3	461,241.8	18,062.8		1,790,811.9
2006 12	1,597.1	36,731.6	659,019.3	507,570.0	18,369.3		1,877,177.3
03	2,605.8	38,207.6	776,783.7	566,658.6	20,317.5		2,033,351.3
06	2,437.1	25,409.5	937,067.2	616,179.5	19,127.4		2,294,415.5
09	2,025.3	22,979.8	1,081,407.4	733,341.1	19,367.3		2,500,694.8
2007 12	2,828.5	27,331.8	1,166,149.5	838,778.5	20,972.4		2,681,579.0
03	5,723.8	31,726.2	1,287,578.5	987,330.7	23,569.6		2,901,130.3
06	8,520.5	10,977.9	1,472,125.9	1,031,501.6	36,307.1		2,977,007.8
09	4,442.2	19,053.9	1,556,911.6	1,090,062.8	46,388.1		2,964,123.0
2008 12	3,412.1	34,794.6	1,570,398.9	1,013,694.2	13,251.7		2,745,454.7
03	4,039.9	26,158.4	1,672,342.0	963,525.9	5,660.2		2,866,111.3
06	3,767.8	20,199.9	1,653,214.5	875,248.8	6,498.8		2,922,008.7
09	4,274.1	24,402.5	1,663,783.5	924,277.4	14,197.1		3,180,761.3
2009 12	4,711.2	20,429.4	1,716,253.8	904,892.3	8,713.7		3,471,151.2
01	3,827.1	20,422.8	1,720,862.3	920,916.9	8,415.5		3,539,798.3
02 <sup>1</sup>	4,942.8	19,615.3	1,724,255.4	953,654.9	13,282.6		3,666,025.6
03	12,013.7	16,948.8	1,760,220.7	964,035.3	15,329.8		3,581,924.2
04	11,883.5	16,589.3	1,754,070.2	972,219.7	10,108.4		3,730,964.6
05	10,470.7	15,245.7	1,815,477.0	1,001,587.6	9,936.5		3,829,661.0
06	11,354.6	15,592.9	1,806,502.8	1,038,929.1	10,250.0		4,085,006.4
07	10,436.2	32,651.1	1,844,147.8	1,075,174.1	9,584.2		4,103,626.0
08	11,083.2	34,614.5	1,789,347.8	1,177,478.7	9,520.5		4,177,962.1
09	11,745.6	37,686.6	1,808,074.9	1,218,394.9	9,450.1		4,397,869.1
10	11,778.3	38,336.0	1,797,039.9	1,233,809.4	9,326.8		4,373,678.2
11	12,458.1	36,873.6	1,783,352.2	1,270,186.9	9,623.5		4,424,344.4
2010 12	14,067.6	17,073.9	1,854,774.6	1,369,232.5	9,629.5		5,169,266.8

<sup>1</sup> Тухайн сард хадгаламж зээлийн хориооны үзүүлэлтийг нэгтгэж тооцов

<sup>1</sup> Data of Savings and Credit Unions was included in Broad Money calculation

**Хадгаламжийн байгууллагуудын мөнгөний тойм**  
**Deposit Corporations Monetary Survey**

Үргэлжлэл  
*continued*

Хугацааны энцэт <i>End-of-period</i>	Мөнгө <i>Money</i>	Бараг мөнгө <i>Quasi-Money</i>	Хөтөлбөрийн зээлийн <i>Government lending loans</i>	Бусад зүйл (цэвэр) <i>Other items (net)</i>	Нийт пассив <i>Total liabilities</i>
1991 12	7,313.7	2,601.2		1,551.7	11,466.6
1992 12	7,640.2	5,412.1		2,998.9	16,051.2
1993 12	18,548.4	24,215.8		5,091.8	47,856.0
1994 12	32,871.2	43,905.8		2,112.6	78,889.6
1995 09	41,893.7	62,986.3		-12,436.5	92,443.5
1995 12	42,636.5	59,408.2		-4,840.3	97,204.4
1996 12	64,301.6	64,093.7		35,578.7	163,974.0
1997 12	76,108.9	93,956.6		33,007.1	203,072.6
1998 12	82,582.0	84,667.6		65,369.9	232,619.5
1999 12	114,825.7	105,341.3		64,010.1	284,177.1
2000 12	130,775.0	128,067.7		27,685.4	286,528.0
2001 12	156,155.3	174,908.9		18,360.9	349,425.2
2002 12	187,727.8	282,397.8		38,409.2	508,534.8
2003 12	212,833.4	490,499.0		67,624.3	770,956.7
2004 12	221,327.6	625,704.9		111,277.8	958,310.2
03	213,357.6	679,616.2	18,824.5	100,946.9	1,012,745.3
06	277,664.4	731,924.1	17,865.2	93,032.9	1,120,486.6
09	273,522.2	838,852.7	16,372.8	115,848.1	1,244,595.8
2005 12	269,124.4	871,014.4	17,272.7	181,791.8	1,339,203.3
03	274,375.7	916,865.6	17,813.9	205,005.6	1,414,060.8
06	328,612.9	1,120,923.4	17,577.6	218,837.4	1,685,951.3
09	331,262.5	1,208,172.2	16,557.5	234,819.7	1,790,811.9
2006 12	331,903.4	1,204,590.0	18,765.0	321,918.9	1,877,177.3
03	401,498.6	1,345,255.8	17,577.9	269,019.0	2,033,351.3
06	502,223.4	1,513,866.8	16,712.5	261,612.8	2,294,415.5
09	515,432.2	1,676,505.5	18,375.0	290,382.1	2,500,694.8
2007 12	590,471.6	1,810,778.1	17,620.0	262,709.3	2,681,579.0
03	577,707.5	1,877,439.7	17,574.0	428,409.1	2,901,130.3
06	624,894.1	1,939,790.0	16,260.0	396,063.6	2,977,007.8
09	603,473.3	1,921,537.3	16,790.9	422,321.4	2,964,123.0
2008 12	647,335.3	1,622,666.2	18,122.4	457,330.8	2,745,454.7
03	511,386.8	1,841,171.2	20,449.5	493,103.7	2,866,111.3
06	544,382.1	1,894,865.5	19,879.3	462,881.8	2,922,008.7
09	622,707.3	2,030,707.4	20,421.0	506,925.7	3,180,761.3
2009 12	651,247.0	2,228,786.8	20,205.4	570,911.9	3,471,151.2
01	629,701.0	2,241,310.1	19,995.3	648,791.9	3,539,798.3
02 <sup>1</sup>	627,897.5	2,353,955.3	19,178.6	664,994.3	3,666,025.6
03	693,003.0	2,281,480.3	18,078.1	589,362.8	3,581,924.2
04	754,299.9	2,408,657.9	17,789.9	550,216.8	3,730,964.6
05	795,971.6	2,458,107.6	16,923.1	558,658.7	3,829,661.0
06	839,932.0	2,683,675.2	16,456.8	544,942.5	4,085,006.4
07	826,662.4	2,716,472.8	17,251.7	543,239.1	4,103,626.0
08	932,036.2	2,725,373.0	16,247.5	504,305.4	4,177,962.1
09	959,096.3	2,892,619.1	17,499.9	528,653.9	4,397,869.1
10	1,000,575.4	2,872,484.9	19,034.8	481,583.1	4,373,678.2
11	995,746.4	2,953,792.9	17,873.9	456,931.2	4,424,344.4
2010 12	1,157,617.9	3,522,363.5	17,781.0	471,504.4	5,169,266.8

<sup>1</sup> Тухайн сард хадгаламж зээлийн хориооны үзүүлэлтийг нэгтгэж тооцож

<sup>1</sup> Data of Savings and Credit Unions was included in Broad Money calculation

**Хэрэглээний барааны үнийн индекс**  
**Consumer price index**

хувнар  
in percent

Хугацааны эц End-of-period	Хүнсний бүтээгдэхүүн Food items	Үүнээс Of which								Хувиас, гутал Clothes, shoes	
		Үр тарианы бүтээгдэхүүн Wheat products	Мах, махан бүтээгдэхүүн Meat and meat products	Сүү, сүүн бүтээгдэхүүн Milk and dairy products	Саахар, чихэр, цай, жимс Sugar, candy, tea, fruits	Томс, хүнсний ногоо Potatoes and vegetables	Хүнсний бусад бүтээгдэхүүн Other food items	Ундаа, тамхины зүйл Soft drinks, cigarettes			
1991 01	100.0		100.0	100.0	100.0				100.0	100.0	
1991 12	134.4		124.0	136.4	156.3				131.4	126.9	192.4
1992 12	755.4		978.4	468.3	884.2				828.9	800.1	679.1
1993 12	2,247.0		2,906.7	1,744.3	2,153.2				2,736.5	1,424.5	1,304.3
1994 12	3,565.3		4,147.5	2,723.1	3,658.8				4,681.4	1,855.4	2,363.1
1995 06	4,204.8		4,880.6	3,771.1	3,211.4				5,686.6	1,700.8	2,838.1
1995.12=100											
1995 12 <sup>1</sup>	58.7		17.2	18.4	5.1				4.9	4.5	10.3
1996 12	78.2		27.0	19.5	7.1				7.5	6.3	15.4
1997 12	87.0		28.1	21.2	9.6				8.7	7.8	20.6
1998 12	87.7		27.6	22.0	10.0				10.1	7.7	22.8
1999 12	95.5		28.8	25.0	10.0				10.6	8.5	23.9
2000 12	109.6		29.6	27.7	10.4				10.5	9.4	23.9
12 <sup>2</sup>	46.6		12.9	12.4	5.2	4.9	4.1		3.5	3.7	13.5
2000.12=100											
2001 12	50.7		13.3	14.8	5.5	4.9	4.3		3.6	4.3	14.1
2002 12	49.9		12.2	14.8	5.6	4.7	4.8		3.6	4.3	14.9
2003 12	53.8		14.2	18.3	5.3	4.8	3.5		3.7	4.2	14.9
2004 12	61.9		16.1	22.6	5.2	5.1	4.3		4.0	4.4	15.0
2005 12	71.5		15.8	29.9	5.8	5.5	5.2		4.5	4.7	14.9

Хугацааны эцэг <sup>3</sup> End-of- period	Хүнсний бараа, согтууруулах бус ундаа Food & non-alcoholic beverages	Үүнээс Of which								Согтууруу- лах ундаа, тамхи Alcoholic beverages, tobacco	Хувиас, бус бараа, гутал Clothing, footwear and cloths
		Хүнсний бараа Foodstuff	Үүнээс Of which Талх, гурил будаа Bread, flour, cereals	Мах, махан бүтээгдэхүүн Meat and meat products	Сүү, сүүн бүтээгдэхүүн, өндөг Milk dairy products, & eggs and chocolate	Саахар, жимс, чанамал, чихэр, шоколад Sugar, jam, car Vegetables	Хүнсний ногоо Vegetables	Төрөл бүрийн өөх, тос Oils & fats	Согтууруулах бус ундаа Non-alcoholic beverages		
2005.12=100											
2005 12 <sup>3</sup>	41.08	39.52	9.92	16.51	3.55	1.61	4.12	2.27	1.56	2.26	12.38
03	42.51	40.94	9.92	17.12	3.63	1.62	4.61	2.21	1.57	2.26	12.63
06	46.70	45.09	10.11	20.67	3.31	1.97	4.72	2.20	1.61	2.28	12.70
09	42.73	41.10	10.18	19.07	3.23	1.88	4.07	2.22	1.63	2.29	12.86
2006 12	41.96	40.31	10.25	16.39	3.75	1.87	4.12	2.25	1.65	2.41	13.28
03	45.45	43.83	10.28	19.32	3.79	1.84	4.46	2.21	1.62	2.32	13.07
06	50.72	49.08	10.41	24.34	3.33	1.84	4.76	2.28	1.64	2.32	12.66
09	52.17	50.47	12.95	21.79	3.57	1.84	5.08	3.23	1.70	2.41	13.01
2007 12	52.26	50.55	13.87	19.75	4.47	1.87	4.75	3.66	1.72	2.38	13.56
03	60.57	58.73	14.99	24.72	5.22	1.98	5.63	3.72	1.85	2.51	13.80
06	77.03	75.13	19.97	32.57	5.25	2.11	8.36	4.29	1.90	2.52	14.73
09	71.39	69.28	19.78	26.93	5.14	2.22	8.04	4.50	2.11	2.58	16.01
2008 12	65.08	62.96	18.77	21.84	6.03	2.23	7.01	4.41	2.12	2.59	17.10
03	69.62	67.34	19.12	24.40	6.38	2.51	9.09	4.39	2.28	2.85	16.73
06	73.07	70.78	19.15	27.65	5.61	2.73	8.43	4.27	2.29	3.11	16.71
09	66.15	63.79	19.21	21.30	5.30	3.05	7.71	4.24	2.36	3.15	17.39
2009 12	64.76	62.34	18.85	20.14	6.37	3.04	6.96	4.18	2.42	3.17	17.71
01	67.88	65.43	19.00	22.31	6.64	3.06	7.35	4.12	2.45	3.18	18.06
02	73.01	70.51	19.06	25.72	7.01	3.45	8.18	4.12	2.50	3.20	18.38
03	76.10	73.60	18.74	29.03	6.99	3.42	8.37	4.08	2.50	3.21	18.36
04	80.11	77.62	18.42	33.07	7.35	3.30	8.38	4.03	2.49	3.22	18.32
05	86.89	84.42	18.61	39.56	7.40	3.20	8.46	4.00	2.47	3.23	18.27
06	86.61	84.15	18.96	40.39	6.20	3.19	8.26	3.99	2.46	3.23	18.20
07	79.21	76.78	18.83	33.02	5.54	3.20	9.00	4.01	2.43	3.23	18.66
08	78.67	76.21	20.26	30.29	5.65	3.26	9.51	4.03	2.46	3.23	18.75
09	76.11	73.68	20.39	27.81	5.92	3.45	8.84	4.00	2.42	3.25	18.93
10	73.37	70.96	20.60	25.42	6.44	3.42	7.89	4.00	2.41	3.29	19.60
11	74.23	71.80	20.66	25.52	6.87	3.42	8.14	4.01	2.43	3.37	19.73
2010 12	78.07	75.64	20.76	28.93	7.00	3.41	8.23	4.03	2.43	3.43	19.86

Эх үүсвэр: Үндэсний Статистикийн хороо, Статистикийн бюллетень Source: Monthly Statistical Bulletin, NSC

<sup>2</sup> 2000 оны 12 сараас ХБ-ны өрөнхий индексийг тооцохдоо 205 нэр төрлийн бүтээгдэхүүнийг 239 болгож шилжүүлэн тооцов.

<sup>3</sup> Since december 2000 the CPI calculation is based on the basket containing 239 consumer goods compared to 205 in previous years.

<sup>2</sup> 2006 оны 4 сараас эхлэн ХБ-ны өрөнхий индексийг тооцохдоо 287 болгон өргөжүүлж, 2005 оны 12 сарын үнийг суурь үнэ болгон авав.

<sup>3</sup> Since April 2006 the items in consumer basket updated to 287 and prices of December 2005 was taken as the base period.

**Хэрэглээний барааны үнийн индекс**  
**Consumer price index**

үргэлжлэл  
continued

Хугацааны эцэс End-of-period	Үүнгээс Of which						Орон сууц, ус, туаш, цахилгаан Utilities	Гэр ахуйн бараа Household items	Эм, тариа Medicine	Тээвэр холбоо Transport & communication
	Ховон, бос бараа Cotton, fabrics	Эр.хүний костюм, хувцас Men's clothing	Эм.хүний бэлэн хувцас Women's clothing	Хүүхдийн хувцас Children's clothing	Гутал ботинк Shoes					
1991 01 16	100.0	100.0	100.0	100.0	100.0	100.0	100.0	100.0	100.0	
1991 12	148.4	174.5	229.3	100.0	236.1	115.5	209.6	100.0	137.3	
1992 12	676.3	347.3	541.2	440.9	965.4	245.8	795.8	196.7	535.3	
1993 12	1,161.6	650.4	896.4	1,404.4	1,782.9	1,068.3	2,087.2	1,933.9	1,673.3	
1994 12	1,957.5	1,259.4	2,110.3	2,126.9	3,377.3	1,595.7	3,247.2	1,933.9	3,221.1	
1995 06	3,532.6	1,265.0	2,567.1	2,161.4	3,740.3	1,644.4	4,458.6	1,933.9	3,276.1	
1995.12=100										
1995 12 <sup>1</sup>	0.4	1.5	3.4	1.0	4.0	10.4	3.9	2.1	7.6	
1996 12	0.6	2.3	4.5	1.8	6.2	17.9	5.4	3.0	13.6	
1997 12	0.7	2.9	6.5	2.3	8.2	27.0	6.6	3.8	15.0	
1998 12	0.6	3.2	6.9	2.4	9.4	29.5	6.1	3.9	17.8	
1999 12	0.6	3.1	7.1	2.4	10.2	32.1	6.5	4.6	23.3	
2000 12	0.6	3.2	7.0	2.5	10.2	42.3	6.6	4.6	24.1	
12 <sup>2</sup>	0.3	3.5	4.6	0.5	4.6	14.1	3.2	1.4	10.1	
2000.12=100										
2001 12	0.2	3.9	4.7	0.6	4.6	17.2	3.3	1.4	10.2	
2002 12	0.3	4.0	4.8	0.6	5.2	18.0	3.4	1.5	10.5	
2003 12	0.3	4.0	4.7	0.7	5.1	17.7	3.3	1.6	10.8	
2004 12	0.3	4.3	4.6	0.7	5.0	18.4	3.4	1.7	13.1	
2005 12	0.4	4.1	4.8	0.7	5.0	19.5	3.6	1.8	13.9	

Хугацааны эцэс <sup>3</sup> End-of-period	Үүнгээс Of which						Орон сууц, ус, туаш, цахилгаан Housing, water, electricity, and fuels	Үүнгээс Of which		Гэр ахуйн тавилга, гэр ахуйн бараа Furnishings, household equipment & tools	Эм, тариа, эмслэлтийн үйлчилгээ Medical care & services	Тээвэр Transport
	Хувцас, бос бараа Clothing, cloth	Эрэгтэй бэлэн хувцас Men's clothing	Эмэгтэй бэлэн хувцас Women's clothing	Хүүхдийн бэлэн хувцас Children's clothing	Гутал Footwear			Усан хангамж, орон сууцны бусад үйлч. бусад үйлч. Water supply & miscellaneous services	Цахилгаан, хийн болон бусад туаш Electricity, gas and other fuels			
2005.12=100												
2005 12 <sup>3</sup>	8.11	3.26	2.93	1.11	4.27	13.40	4.24	7.60	4.30	1.62	8.71	
03	8.46	3.47	3.07	1.10	4.17	13.12	4.78	6.73	4.34	1.64	9.35	
06	8.44	3.40	3.09	1.13	4.26	13.01	4.78	6.67	4.37	1.64	9.42	
09	8.58	3.45	3.14	1.17	4.29	14.38	5.18	7.61	4.45	1.66	9.63	
2006 12	8.84	3.54	3.21	1.22	4.45	14.70	5.18	7.91	4.64	1.77	9.57	
03	8.73	3.50	3.20	1.18	4.32	13.69	5.34	6.60	4.66	1.77	9.60	
06	8.41	3.37	3.05	1.14	4.26	13.37	5.34	6.70	4.73	1.79	9.79	
09	8.68	3.49	3.07	1.27	4.33	14.91	5.34	7.67	4.98	2.01	10.12	
2007 12	8.96	3.58	3.10	1.35	4.60	15.73	5.37	8.41	5.22	2.10	10.59	
03	9.19	3.66	3.19	1.39	4.62	15.53	5.37	8.15	5.51	2.18	10.91	
06	9.95	3.98	3.55	1.49	4.78	15.65	5.37	8.11	5.76	2.52	11.11	
09	10.82	4.42	3.73	1.69	5.19	19.30	5.80	10.93	5.95	2.70	15.05	
2008 12	11.35	4.62	3.91	1.76	5.74	18.45	5.83	9.90	5.99	2.68	14.17	
03	11.29	4.63	3.85	1.75	5.44	17.78	5.83	9.28	6.17	2.70	13.88	
06	11.47	4.79	3.99	1.73	5.24	17.47	5.87	9.04	6.29	2.91	13.08	
09	12.09	4.97	4.09	1.89	5.30	17.90	5.89	9.39	6.37	2.95	14.02	
2009 12	12.17	4.97	4.14	1.93	5.54	17.74	5.90	9.23	6.37	3.06	14.06	
01	12.25	5.00	4.17	1.94	5.81	18.06	6.12	9.34	6.38	3.07	14.06	
02	12.40	5.06	4.24	1.96	5.98	18.02	6.29	9.12	6.39	3.05	13.99	
03	12.37	5.07	4.22	1.94	5.99	17.68	6.29	8.81	6.37	3.07	14.19	
04	12.56	5.23	4.23	1.96	5.77	17.69	6.29	8.81	6.44	3.09	14.20	
05	12.55	5.20	4.24	2.00	5.73	17.66	6.29	8.93	6.45	3.09	14.45	
06	12.49	5.20	4.22	1.96	5.72	18.40	6.29	9.66	6.45	3.11	14.28	
07	12.88	5.36	4.26	2.15	5.78	18.44	6.29	9.69	6.47	3.11	14.26	
08	12.93	5.35	4.28	2.18	5.82	19.59	7.32	9.71	6.51	3.12	14.24	
09	13.11	5.46	4.32	2.19	5.82	19.54	7.32	9.63	6.50	3.12	14.25	
10	13.29	5.53	4.36	2.20	6.31	19.58	7.32	9.60	6.65	3.17	14.24	
11	13.32	5.56	4.36	2.21	6.41	19.94	7.32	9.96	6.68	3.17	14.32	
2010 12	13.38	5.57	4.40	2.21	6.48	19.96	7.32	9.96	6.66	3.17	14.32	

<sup>2</sup> 2000 оны 12 сараас ХБ-ны ерөнхий индексийг тооцохдоо 205 нэр төрлийн бүтээгдэхүүнийг 239 болгож шилжүүдэг тооцов.

<sup>2</sup> Since december 2000 the CPI calculation is based on the basket containing 239 consumer goods compared to 205 in previous years.

<sup>3</sup> 2006 оны 4 сараас эхлэн ХБҮ-ны сарсан дахь бараа үйлчилгээг 287 болгон өргөжүүлж, 2005 оны 12 сарын үнийг суурь үнэ болгон авав.

<sup>3</sup> Since April 2006 the items in consumer basket updated to 287 and prices of December 2005 was taken as the base period.



**Хэрэглээний барааны үнийн индекс**  
**Consumer price index**

үргэлжлэл  
continued

Хугацааны эцэст End-of-period			Соёл боловсрол Articles for Cultural needs			Бусад бараа Other goods & services	Ерөнхий индекс General CPI	Сарын өөрчлөлт % Monthly changes	Оны эхлээс % Changes from the beginning of year	Жилийн өөрчлөлт Annual changes	Инфляцийн шат. дунд. 12 сараар Moving average of monthly inflation	Суурь инфляци <sup>4</sup>			Улсын хэрэглээний үнийн индекс					
												Monthly changes	Changes from the beginning of year	Annual changes	Сарын өөрчлөлт Monthly changes	Оны эхлээс % Changes from the beginning of year	Жилийн өөрчлөлт Annual changes	National CPI		
																		Monthly changes	Changes from the beginning of year	Annual changes
1991 01 16			100.0			100.0	100.0													
1991 12			277.3			152.3	152.7	5.1												
1992 12			581.0			430.2	649.8	11.0	325.5											
1993 12			2,154.8			1,483.8	1,838.7	2.5	183.0											
1994 12			4,427.9			2,904.7	3,057.8	2.1	66.3											
1995 06			7,537.2			3,146.9	3,661.0	7.3	19.7											
1995.12=100																				
1995 12 <sup>1</sup>			3.6			3.5	100.0	2.1	53.1											
1996 12			5.7			5.3	144.6	3.2	44.6											
1997 12			8.2			6.4	174.2	0.9	20.5	20.5	1.6									
1998 12			9.8			7.4	184.7	2.1	6.0	6.0	0.5									
1999 12			11.3			7.9	203.1	1.6	10.0	10.0	0.8									
2000 12			11.8			8.2	219.6	2.1	8.1	8.1	0.7									
12 <sup>2</sup>			7.4			3.7	100.0	2.1	8.1											
2000.12=100																				
2001 12			7.3			3.8	107.9	2.1	8.0	8.0	0.7									
2002 12			7.6			3.9	109.8	1.6	1.6	1.6	0.1	0.5								
2003 12			8.4			4.5	114.9	1.1	4.7	4.7	0.4	-0.7								
2004 12			9.0			4.8	127.4	0.9	11.0	11.0	1.2	-0.5								
2005 12			9.6			5.0	139.6	1.2	9.5	9.5	0.8	-0.5	3.54							

Хугацааны эцэст <sup>3</sup> End-of-period	Үүнгээс Of which		Холбооны хэрэгсэл, шуудангийн үйлчилгээ Communication	Амралт, чөлөөт цаг, соёлын бараа үйлчилгээ Recreation & culture	Боловсролын үйлчилгээ Education	Зочид буудал, нийтийн хоол, дотуур байр Restaurants hotels	Бусад бараа үйлчилгээ Miscellaneous goods & services	Ерөнхий индекс General CPI	Сарын өөрчлөлт % Monthly changes	Оны эхлээс % Changes from the beginning of year	Жилийн өөрчлөлт Annual changes	Инфляцийн шат. дунд. 12 сараар Moving average of monthly inflation	Суурь инфляци <sup>4</sup>			Улсын хэрэглээний үнийн индекс			
	Хувийн тээврийн хэрэгслийн засвар, үйлчилгээ Operation of personal transport equipment	Тээврийн үйлчилгээ Transport services											Core inflation <sup>4</sup>	Сарын өөрчлөлт Monthly changes	Оны эхлээс % Changes from the beginning of year	Жилийн өөрчлөлт Annual changes	National CPI		
																	Monthly changes	Changes from the beginning of year	Annual changes
2005.12=100																			
2005 12 <sup>3</sup>	2.47	5.76	4.05	3.33	4.15	1.72	3.00	100.0											
03	2.44	6.46	3.39	3.42	4.15	1.73	3.04	101.59	-0.61	1.59									
06	2.53	6.46	3.11	3.50	4.15	1.74	3.22	105.9	1.3	5.9									
09	2.71	6.48	3.09	3.58	4.58	1.79	3.24	104.3	-0.3	4.3									
2006 12	2.53	6.07	3.09	3.62	4.58	1.89	3.32	104.8	0.5	4.8	4.8	0.0	0.0						
03	2.54	6.49	2.98	3.60	4.58	1.92	3.33	107.0	0.5	2.0	5.3	0.2	0.0	-1.4	4.0				
06	2.64	6.61	2.91	3.52	4.58	1.95	3.34	111.7	2.1	6.5	5.5	0.5	0.1	-1.5	2.7				
09	2.82	6.73	2.90	3.51	5.50	2.04	3.39	116.9	1.3	11.6	12.1	0.5	3.0	7.4	9.1				
2007 12	3.19	6.81	2.90	3.73	5.50	2.08	3.48	119.5	0.5	14.0	14.0	0.4	-0.6	12.5	12.5				
3	3.47	6.84	2.89	3.90	5.50	2.18	3.51	129.0	2.7	7.9	20.6	1.7	1.6	3.0	17.6	3.2	7.9		
6	3.49	7.01	2.88	3.91	5.50	2.47	3.88	147.9	1.9	23.8	32.4	2.5	1.0	11.2	28.0	0.3	18.8	32.6	
9	4.54	9.86	2.78	3.95	7.57	2.76	3.99	154.0	-0.2	28.8	31.7	2.4	2.6	24.4	30.2	0.5	24.6	32.2	
2008 12	3.59	9.87	2.78	4.05	7.57	2.80	4.02	147.3	-0.5	23.2	23.2	1.6	-0.5	23.1	23.1	0.0	22.1	22.1	
03	3.49	9.63	2.77	4.08	7.57	2.86	4.25	151.3	2.8	2.7	17.2	1.1	1.3	0.4	19.9	1.8	3.2	16.3	
06	3.00	9.37	2.99	4.19	7.57	3.03	4.42	155.0	-0.7	5.1	4.7	0.4	0.2	1.0	12.3	-1.4	4.2	6.3	
09	3.77	9.58	2.98	4.10	8.25	3.13	4.66	151.1	-1.2	2.6	-1.9	-0.2	1.0	4.1	3.3	-0.1	2.1	0.0	
2009 12	3.82	9.57	2.98	4.14	8.25	3.14	4.66	150.0	0.2	1.9	1.9	0.2	0.2	4.1	4.1	0.7	4.2	4.2	
01	3.82	9.57	2.97	4.14	8.25	3.28	4.66	154.0	2.6	2.6	4.5	0.4	1.0	1.0	5.3	2.3	2.3	5.7	
02	3.67	9.57	3.46	4.15	8.25	3.40	4.68	160.0	3.9	6.6	8.7	0.7	1.6	2.5	7.8	3.0	5.4	8.3	
03	3.83	9.61	3.48	4.16	8.25	3.42	4.72	163.0	1.9	8.7	7.8	0.6	-0.3	2.2	6.0	1.9	7.4	8.5	
04	3.80	9.65	3.48	4.17	8.25	3.43	4.74	167.1	2.5	11.4	8.4	0.7	-0.2	2.0	5.2	2.1	9.7	8.3	
05	3.94	9.77	3.48	4.18	8.25	3.46	4.75	174.2	4.2	16.1	11.7	1.0	0.3	2.3	5.6	3.2	13.1	11.6	
06	3.79	9.75	3.48	4.12	8.25	3.48	4.74	174.3	0.1	16.2	12.6	1.0	0.7	3.0	6.1	-1.5	11.4	11.4	
07	3.76	9.75	3.48	4.12	8.25	3.48	4.74	167.5	-3.9	11.6	8.8	0.7	0.4	3.4	5.7	-2.8	8.3	9.8	
08	3.76	9.74	3.48	4.14	9.93	3.51	4.76	169.9	1.5	13.2	11.1	0.9	3.5	6.9	7.9	0.7	9.0	11.2	
09	3.76	9.74	3.48	4.16	9.93	3.51	4.79	167.6	-1.4	11.7	10.9	0.9	0.4	7.3	7.2	-0.7	8.3	10.6	
10	3.75	9.74	3.48	4.16	9.93	3.59	4.79	165.8	-1.0	10.5	11.3	0.9	0.9	8.3	8.5	0.4	8.7	11.3	
11	3.85	9.73	3.48	4.18	9.93	3.59	4.80	167.4	1.0	11.6	11.8	1.0	0.7	9.0	9.2	1.5	10.3	11.1	
2010 12	3.85	9.73	3.48	4.20	9.93	3.61	4.80	171.5	2.4	14.3	14.3	1.1	0.3	9.4	9.4	2.4	13.0	13.0	

<sup>1</sup> 2000 оны 12 сараас ХБ-ны ерөнхий индексийг тооцохдоо 205 нэр төрлийн бүтээгдэхүүнийг 239 болгон шилжүүлэн тооцож.

<sup>2</sup> Since december 2000 the CPI calculation is based on the basket containing 239 consumer goods compared to 205 in previous years.

<sup>3</sup> 2006 оны 4 сараас эхлэн ХБҮ-ны сагсан дахь бараа үйлчилгээг 287 болгон өргөжүүлж, 2005 оны 12 сарын үнийг суурь үнэ болгон авав.

<sup>4</sup> Since April 2006 the items in consumer basket updated to 287 and prices of December 2005 was taken as the base period.

<sup>5</sup> Core inflation is estimated after excluding the most price volatile 29 items, such as meat, milk, dairy, and vegetables, from consumer basket.

**Харилцах, хадгаламжийн хүү**  
**Deposit rate**

жилийн хувиар  
in annual percent

Хугацааны эцэст End-of-period	Харилцах, хадгаламжийн хүү Deposit rate								
	Харилцах данс Current account				Хадгаламж Deposits				
	Зарласан хүү, дээд доод Announced rate, highest & lowest		Жигнэсэн дундаж хүү Weighted average rate		Хугацаагүй хадгаламж Demand deposit	Хугацаатай хадгаламж Time deposits		Жигнэсэн дундаж хүү Weighted average rate	
	Төгрөгийн Domestic currency	Валютын Foreign currency	Төгрөгийн Domestic currency	Валютын Foreign currency		Төгрөгийн Domestic Currency 0-1 жил 1 year	Валютын Foreign Currency 0-1 жил 1 year	Төгрөгийн Domestic currency	Валютын Foreign currency
1993 12	2.0				24-100	70-153	10-72		
1994 12	2.0				10-63.8	50-101.2	6-72		
1995 12	2.0				12.0-42.6	12.5-101.2	6.0-42.6		
1996 12	2.0				12.0-34.5	12.7-60.1	3.6-42.6		
1997 12	2.0				3.6-34.5	6.2-69.6	2.4-42.6		
1998 12	0.8-6.0	1.0-3.6			3.6-19.6	6.0-42.6	1.2-24.0		
1999 12	3.0-6.0	1.0-3.6			3.0-13.2	9.6-30.0	3.6-14.4		
2000 12	2.4-6.0	1.0-3.6			1.2-13.2	3.6-24.0	1.2-12.0		
2001 12	0.0-5.1	0.3-4.2			1.2-9.60	2.4-24.0	1.0-13.2		
2002 12	0.0-6.0	0.3-3.0			2.4-10.2	6.0-22.0	1.2-12.0		
2003 12	0.0-6.0	0.3-3.0			1.8-10.0	6.0-22.0	2.4-12.0		
2004 12	0.0-4.8	0.3-3.0			6.0-9.60	6.0-20.4	1.4-9.60		
03	0.0-4.8	0.3-3.0			6.0-9.9	6.0-20.4	1.4-9.8		
06	0.0-4.8	0.0-3.0			6.0-9.9	6.0-20.4	1.4-9.8		
09	0.0-4.8	0.0-3.0			6.0-10.0	6.0-19.2	1.4-9.8		
2005 12	0.0-4.8	0.0-7.2			6.0-9.96	6.0-19.2	1.4-10.8		
03	0.0-4.8	0.0-7.2			6.0-9.96	6.0-19.2	1.4-10.8		
06	0.0-4.8	0.0-3.6			6.0-10.0	6.0-19.2	1.4-11.4		
09	0.0-5.0	0.0-4.0			6.0-10.2	7.56-19.2	1.2-11.4		
2006 12	0.0-5.0	0.0-4.0			6.0-10.2	7.56-19.4	1.4-11.4		
03	0.0-5.0	0.0-4.0			6.0-10.2	7.56-19.4	1.4-11.4		
06	0.0-4.8	0.0-3.6			6.0-10.2	7.56-19.4	1.4-11.5		
09	0.0-4.8	0.0-3.6			6.0-10.2	7.56-19.3	1.2-11.4		
2007 12	0.0-4.8	0.0-3.6			6.0-10.3	7.56-19.3	1.2-11.4		
03	0.0-7.2	0.0-3.6			6.0-10.0	2.4-19.2	1.2-19.3		
06	0.0-7.2	0.0-3.6			6.0-9.96	2.4-18.6	1.2-9.60		
09	0.0-7.2	0.0-3.6			0.2-10.2	2.4-18.6	1.2-10.2		
2008 12	0.0-7.2	0.0-3.6	2.4	1.1	4.8-12.0	2.4-19.4	1.2-14.04	13.6	7.4
03	0.0-5.4	0.0-4.2	2.4	1.1	4.8-12.0	2.4-19.4	1.4-14.04	13.5	6.3
06	0.0-7.3	0.0-7.3	2.2	1.1	4.8-12.1	2.4-19.5	1.4-14.05	13.2	7.0
09	0.0-7.2	0.0-7.2	2.5	1.1	4.8-12.0	2.4-19.6	1.4-14.04	13.2	7.0
2009 12	0.0-7.2	0.0-7.2	2.6	1.8	3.6-12.0	2.4-19.2	1.2-14.04	12.9	6.4
01	0.0-7.2	0.0-7.2	2.6	1.8	0.0-18.0	2.4-19.2	1.2-14.04	12.9	6.2
02	0.0-8.4	0.0-3.0	2.7	1.6	0.0-12.0	6.0-19.2	1.4-14.04	12.3	5.8
03	0.0-8.4	0.0-3.0	2.9	1.6	0.0-12.0	6.0-19.2	1.0-14.04	12.3	5.7
04	0.0-8.4	0.0-3.0	2.9	1.5	0.1-17.0	6.0-19.2	1.0-14.04	12.2	5.7
05	0.0-8.4	0.0-3.0	2.8	1.5	0.0-8.4	2.4-19.2	0.6-14.04	12.0	6.1
06	0.0-8.4	0.0-3.0	2.9	1.6	0.0-8.4	6.0-18.5	0.6-14.04	11.9	5.8
07	0.0-8.4	0.0-3.0	2.9	1.6	0.0-8.4	6.0-19.2	0.6-14.04	11.7	5.7
08	0.0-8.4	0.0-3.0	2.9	1.8	0.0-10.2	6.0-19.2	0.6-14.04	11.8	5.8
09	0.0-8.4	0.0-3.0	3.0	1.8	0.0-8.4	6.0-19.2	0.6-14.04	11.8	5.7
10	0.0-8.4	0.0-3.0	3.5	1.8	0.0-8.4	6.0-19.2	0.6-14.04	11.6	5.4
11	0.0-8.4	0.0-3.0	3.4	2.0	0.0-8.4	6.0-19.2	0.6-14.04	11.1	3.4
2010 12	0.0-8.4	0.0-3.0	3.2	1.6	0.0-8.4	6.0-18.0	0.6-14.04	10.7	4.0

**Зээлийн хүү**  
**Loan rate**

хувиар  
in percent

Хугацааны Эцэст End of period	Төв банкны үнэт цаасны хүү Central bank's bills rate												
	Бодлогын хүү Policy rate	Жигтэсэн дундаж хүү Weighted average rate	Хугацаа Period										
			3 өдөр 3 days	7 өдөр 7 days	8 өдөр 8 days	1 долоо хоног 1 week	2 долоо хоног 2 weeks	4 долоо хоног 4 weeks	12 долоо хоног 12 weeks	13 долоо хоног 13 weeks	28 долоо хоног 28 weeks	180 өдөр 180 days	
1993 12		120-300											
1994 12		72-264											
1995 12		72-150											
1996 12		72-109											
1997 12		45.0-50.0											
1998 12		23.3											
1999 12		11.4											
2000 12		8.6					8.5	8.5	10.5			5.0	
2001 12		8.6					6.8	8.1	8.8			13.7	
2002 12		9.9					10.0	7.6	10.9			11.4	
2003 12		11.5					9.2	9.9	11.9			13.7	
2004 12		15.75	15.47				15.49	15.79	15.90			15.96	
03		9.52					2.50	3.00	10.50			16.00	
06		5.49		1.28				4.23	6.11			9.68	
09		6.95		4.47				4.98	6.32			10.00	
2005 12		4.75	1.88	4.44				3.65	3.80			9.13	
03		3.65		2.92				3.37	2.62			6.04	
06		7.40		4.69				5.80	6.50			9.81	11.64
09		7.43		5.00				5.79	6.50			9.50	11.64
2006 12		6.42		5.09								7.39	10.05
03		4.26		1.84								6.78	9.80
06		3.68		3.82								3.48	
09		8.75		6.40						11.53			
2007 12	8.40	9.85					8.40			11.50			12.62
03	9.75	11.25					9.75			14.35			15.08
06	9.75	15.42					9.75			17.98			16.06
09	10.25	16.06					10.25			13.85			16.68
2008 12	9.75	14.78					9.75			17.77			16.73
03	14.00	13.59					14.00			19.82			16.44
06	11.50	16.48					11.50			16.34			13.82
09	10.00	11.95					10.00			11.91			
2009 12	10.00	10.82					10.00			10.95			
01	10.00	10.45					10.00			11.05			
02	10.00	10.36					10.00			9.99			
03	10.00	10.03					10.00			10.47			
04	10.00	10.03					10.00			9.81			
05	11.00	10.24					11.00			10.91			
06	11.00	10.87					10.86			11.11			
07	11.00	11.27					10.97			11.61			
08	11.00	11.21					10.87			11.68			
09	11.00	11.01					10.5			11.17			
10	11.00	10.07					9.02			10.70			
11	11.00	10.44					11			9.65			
2010 12	11.00	10.99					10.99			10.22			

<sup>1</sup>Төв банкны долоо хоногийн хугацаатай үнэт цаасны арилжааг 2010 оны 4-р сарын 21-ний өдрөөс эхлэн хүүгийн өрсөлдөх зарчмаар явуулах болсон тул ЖДХ харуул

**Зээлийн хүү**  
**Loan rate**

хувиар  
in percent

Хугацааны Эцэст End of period	Банк хоорондын захын хүү Interbank market rate							Банкуудын зээлийн хүү Banks loan rates		
	Засгийн газрын үнэт хүү (тухайн арилжааны Treasury bills rate (as a trading rate) Dom. cur-с For. cur-сy	Банк хооронд олгосон зээл	Репо нөхцлөөр	Төв банкны үнэт цаас цаас	Овернайт зээл	Банк хоорондын хадгаламж	Жигнэсэн дундаж хүү	Төгрөгийн <sup>1</sup>	Валютын <sup>1</sup>	Бодитоор төлөгдсөн хүү
		Interbank loans	Repos	Central bank bills	Overnight loans	Interbank deposits	Weighed average rate	Domestic currency	Foreign currency	Paid rate
1993 12										
1994 12										
1995 12										
1996 12										
1997 12										
1998 12								45.8	34.2	
1999 12								38.8	36.5	
2000 12								34.7	25.8	
2001 12								41.4	22.2	
2002 12		15.9	7.2	5.2	12.0		6.91	33.4	19.8	30.7
2003 12		15.6	9.6	11.9			10.24	31.5	19.6	30.2
2004 12	4.40	15.91	15.59	15.74	15.52		15.36	30.0	17.9	25.0
03			2.13	9.14	4.53		7.48	32.7	16.3	24.3
06		12.00	4.00	4.19	5.86		5.65	30.0	17.3	24.1
09		11.00	4.73	4.78	6.20		5.85	30.5	16.2	24.2
2005 12		13.20	4.35	4.92	6.10		6.13	28.3	14.8	23.5
03	6.95		1.85	6.00	2.75		2.38	28.3	15.8	23.2
06		11.00	5.00		7.89		7.34	24.2	15.9	23.2
09			6.93	9.00	8.40		8.26	26.1	15.3	23.1
2006 12	6.50	5.80	6.06		6.16		6.12	24.5	15.5	23.0
03		8.19	5.33	3.94	6.15		6.49	22.5	13.2	22.9
06	5.56	6.30	0.00	4.86	4.16		5.26	21.0	15.5	22.2
09	7.45	6.97	0.00	5.40	6.05		6.46	19.7	12.9	21.6
2007 12		8.39	6.76	8.11	8.67	8.78	8.25	19.9	14.2	21.7
03		9.98	9.49	11.01	10.45	9.88	10.17	20.8	13.8	20.3
06		10.76	13.06	16.00	13.84	11.23	12.53	21.7	15.0	19.9
09		10.88	17.00		18.72	18.60	18.22	21.5	15.7	19.6
2008 12		11.00			19.82	14.71	17.87	20.4	16.8	19.3
03		14.07		8.34	19.07	16.50	17.86	20.4	19.4	18.8
06		15.40	13.96		12.86	20.25	15.05	23.5	16.3	18.5
09		11.00	7.00	11.30	10.00	12.14	11.51	22.2	14.8	18.5
2009 12		11.00	7.48	9.87	7.15	8.89	8.58	20.8	16.5	18.7
01		12.75	5.84	7.51	5.89	6.94	7.22	22.2	15.4	18.8
02		11.00	7.88	8.94	8.00	8.00	8.43	21.4	14.9	18.9
03		11.00	7.11	6.97	5.29	9.14	7.24	20.0	14.9	19.2
04		11.00	5.00			10.43	10.23	20.5	15.6	19.2
05		11.00	7.28	10.13	12.33	9.64	9.53	20.2	14.5	19.5
06		11.19	9.67	10.85	10.00	10.93	10.42	19.7	14.0	19.4
07		11.00	12.50	10.57	10.05	11.41	10.71	19.4	14.3	19.1
08		11.00	6.00	9.62	9.47	12.00	8.82	20.4	14.0	18.9
09		11.00	10.35	10.39	9.56	11.92	10.33	19.4	14.1	19.0
10		11.00	8.28	8.63		11.18	8.63	19.5	13.8	18.9
11			8.74	9.66		11.33	9.53	18.9	12.9	18.9
2010 12		11.19	10.45	10.32	11.09	6.53	9.45	17.9	12.6	19.0

**Гадаад валютын зах зээлийн ханш**  
**Exchange rates on foreign exchange market**

Гадаад валютын нэгжийг төгрөгөөр илэрхийлбэл  
 Togrog against foreign currency

Хугацааны эцэст End-of-period	АНУ-ын доллар USD		Евро EUR	Шведийн крон SEK	Болгарын лев BGN	Унгарын форинт HUF	Чехийн крон CZK	БНСУ-ын вон KRW	Японы иен JPY	Хятадын юань CNY	Английн фунт GBP	Хонконг доллар HKD	Оросын рубли RUB
	хугацааны эцэст end-of-period	сарын дундаж monthly average											
	1993 12	396.51											
1994 12	414.09	413.00							4.12	48.60	639.77	53.51	0.12
1995 12	473.62	473.48							4.63	56.94	731.27	61.23	0.10
1996 12	693.51	692.76						0.82	5.98	83.57	1,172.48	89.64	0.12
1997 12	813.16	811.95						0.49	6.28	98.21	1,358.14	104.93	0.14
1998 12	902.00	891.86						0.74	7.71	108.96	1,508.05	116.45	42.65
1999 12	1,072.37	1,070.39	1,086.85					0.95	10.42	129.53	1,734.56	137.99	39.95
2000 12	1,097.00	1,097.00	1,006.61					0.89	9.74	132.52	1,615.11	140.66	39.18
2001 12	1,102.00	1,101.29	973.60					0.83	8.39	133.10	1,598.60	141.30	36.20
2002 12	1,125.00	1,124.09	1,169.40	128.00	599.30	5.00	37.30	0.94	9.38	135.90	1,804.00	144.30	35.40
2003 12	1,168.00	1,170.30	1,460.20	160.60	746.50	5.60	44.90	0.98	10.92	141.10	2,073.40	150.50	39.90
2004 12	1,209.00	1,211.77	1,647.40	183.20	842.40	6.70	54.00	1.16	11.65	146.10	2,320.90	155.50	43.40
03	1,192.00	1,202.54	1,543.00	168.90	788.90	6.20	51.10	1.17	11.12	144.00	2,239.20	152.80	42.80
06	1,193.00	1,190.53	1,439.20	152.70	735.90	5.80	47.90	1.16	10.84	144.10	2,168.90	153.50	41.70
09	1,215.00	1,212.19	1,465.30	156.27	749.20	5.90	49.70	1.17	10.76	150.10	2,148.80	150.50	42.60
2005 12	1,221.00	1,226.68	1,449.10	153.82	741.20	5.80	50.10	1.21	10.37	151.30	2,103.70	157.50	42.50
03	1,174.00	1,183.23	1,416.50	150.25	724.20	5.30	49.40	1.20	9.99	146.30	2,043.20	151.30	42.30
06	1,172.00	1,171.53	1,470.70	159.56	752.00	5.20	51.70	1.22	10.06	146.50	2,130.80	150.90	43.30
09	1,168.00	1,167.70	1,478.70	159.58	756.10	5.40	52.10	1.23	9.89	147.70	2,181.40	149.90	43.60
2006 12	1,165.00	1,164.84	1,535.30	169.83	785.00	6.10	55.80	1.25	9.81	149.20	2,290.90	149.80	44.30
03	1,165.00	1,164.55	1,553.40	166.41	794.30	6.20	55.40	1.24	9.92	150.80	2,288.20	149.10	44.80
06	1,163.63	1,164.09	1,566.54	169.27	800.96	6.34	54.83	1.26	9.46	152.78	2,326.85	148.91	45.08
09	1,184.26	1,187.63	1,673.66	181.19	855.83	6.69	60.63	1.29	10.25	157.61	2,393.21	152.58	47.42
2007 12	1,169.97	1,170.22	1,717.16	181.49	877.99	6.78	64.49	1.25	10.33	160.18	2,337.54	149.99	47.68
03	1,168.17	1,170.84	1,841.68	196.03	941.54	7.17	72.88	1.18	11.69	166.58	2,329.74	150.12	49.67
06	1,158.12	1,159.22	1,823.23	193.81	932.13	7.64	75.73	1.11	10.88	168.78	2,296.20	148.44	49.39
09	1,146.10	1,148.24	1,643.95	169.34	840.55	6.79	67.02	0.96	10.79	167.43	2,074.02	147.47	46.31
2008 12	1,267.51	1,228.97	1,786.75	163.07	913.52	6.67	67.20	1.01	14.04	185.25	1,837.19	163.55	43.12
03	1,524.07	1,562.95	2,009.71	182.97	1,027.52	6.53	73.22	1.10	15.84	222.94	2,157.63	196.65	44.60
06	1,435.49	1,428.56	2,012.13	184.23	1,029.06	7.28	77.43	1.12	15.03	210.08	2,371.79	185.22	45.93
09	1,426.01	1,418.47	2,078.84	202.92	1,062.84	7.71	82.52	1.20	15.89	208.85	2,261.65	184.00	47.35
2009 12	1,442.84	1,446.52	2,071.34	200.66	1,058.97	7.59	78.45	1.24	15.66	211.35	2,295.77	186.05	47.67
01	1,455.70	1,455.09	2,031.94	198.42	1,038.97	7.48	77.43	1.25	16.14	213.23	2,352.56	187.39	47.87
02	1,449.82	1,446.08	1,966.10	201.61	1,005.25	7.27	75.70	1.25	16.22	212.38	2,211.63	186.77	48.24
03	1,367.10	1,412.82	1,847.43	189.20	944.52	6.97	72.74	1.21	14.77	200.28	2,057.90	176.07	46.51
04	1,372.46	1,382.64	1,812.75	188.05	926.84	6.74	70.86	1.23	14.59	201.05	2,088.88	176.71	46.90
05	1,384.85	1,387.24	1,710.29	177.07	874.61	6.23	66.72	1.16	15.16	202.73	2,009.28	177.82	45.36
06	1,368.65	1,380.33	1,671.94	175.42	854.87	5.82	64.78	1.12	15.43	201.42	2,058.31	175.82	43.82
07	1,353.49	1,365.63	1,766.85	186.99	903.35	6.21	71.35	1.14	15.67	199.83	2,116.05	174.27	44.78
08	1,301.80	1,325.13	1,657.45	176.62	847.53	5.85	66.99	1.09	15.29	191.37	2,026.71	167.33	42.44
09	1,325.59	1,324.81	1,804.39	197.21	922.60	6.53	73.34	1.16	15.85	198.16	2,097.08	170.88	43.61
10	1,283.38	1,306.77	1,778.83	189.45	909.49	6.51	72.18	1.14	15.91	192.26	2,040.96	165.45	41.66
11	1,246.69	1,274.15	1,658.16	179.28	847.54	5.94	66.99	1.08	14.87	187.09	1,950.38	160.59	39.88
2010 12	1,256.47	1,234.08	1,662.31	184.92	849.94	5.95	65.63	1.11	15.42	190.21	1,949.35	161.43	41.35

**Гадаад валютын зах зээлийн ханш**  
**Exchange rates on foreign exchange market**

үргэлжлэл  
*continued*

Хугацааны эцэст <i>End-of-period</i>	Швейцарь франк  <i>CHF</i>	Египетийн фунт  <i>EGP</i>	Канадын доллар  <i>CAD</i>	Австралийн доллар  <i>AUD</i>	Тайландын бат  <i>THB</i>	Индонезийн рупи  <i>IDR</i>	Малайзийн рингит  <i>MYR</i>	Сингапурын доллар  <i>SGD</i>	Алт /унциар/  <i>XAU</i>	Мөнгө /унциар/  <i>XAG</i>	Зээлжих тусгай эрх <i>SDR</i>
1993 12	275.01		298.28								549.62
1994 12	310.99		295.08								602.19
1995 12	409.53		347.61								708.53
1996 12	514.28		506.86								999.35
1997 12	565.93		567.27								1,095.06
1998 12	656.72		582.16	547.97	24.73	0.11	237.68	543.18	257,761.60	4,446.86	1,271.24
1999 12	676.15		730.75	691.09	28.52	0.15	282.20	642.41	308,574.47	5,651.60	1,473.72
2000 12	659.53		720.81	608.56	26.10	0.12	288.68	634.84	300,358.60	5,062.66	1,426.96
2001 12	657.30		691.00	559.70	24.90	0.11	290.00	595.90	306,080.50	4,937.00	1,382.40
2002 12	804.00	242.80	720.60	634.90	26.00	0.13	296.10	647.60	393,187.50	5,298.80	1,519.20
2003 12	935.70	188.80	892.60	872.10	29.50	0.14	307.40	686.40	485,537.60	6,926.20	1,729.00
2004 12	1,067.70	197.70	999.00	936.70	31.00	0.13	318.20	738.40	528,151.70	8,263.50	1,875.00
03	993.90	205.50	984.10	920.30	30.30	0.13	313.70	721.70	508,090.00	8,320.20	1,797.60
06	931.60	205.70	968.40	910.10	28.90	0.12	313.90	708.70	519,104.10	8,452.40	1,745.60
09	941.70	211.10	1,035.10	923.60	29.50	0.12	322.30	719.20	570,442.50	8,948.50	1,760.40
2005 12	930.10	212.40	1,048.30	892.60	29.80	0.12	323.00	733.10	625,152.00	10,897.40	1,751.80
03	899.10	204.30	1,003.20	833.20	30.20	0.13	317.80	724.40	674,903.30	13,154.70	1,688.00
06	940.60	203.50	1,043.40	853.40	30.50	0.13	317.70	733.90	680,990.60	12,024.70	1,722.80
09	932.00	203.60	1,046.90	870.70	31.10	0.13	316.70	736.00	702,406.00	13,478.70	1,728.20
2006 12	955.00	204.00	1,004.20	923.20	32.30	0.13	330.70	760.20	738,959.50	15,034.30	1,751.20
03	958.20	204.30	1,004.20	943.10	33.30	0.13	337.30	768.00	774,958.00	15,535.30	1,762.90
06	947.47	204.19	1,008.11	979.43	33.69	0.13	335.49	757.40	750,134.08	14,353.38	1,761.21
09	1,010.59	211.66	1,180.48	1,040.55	34.56	0.13	346.45	793.53	863,325.54	15,910.53	1,838.93
2007 12	1,032.58	211.66	1,194.58	1,024.02	34.75	0.12	352.61	808.74	969,437.14	17,204.41	1,833.66
03	1,170.75	213.85	1,148.53	1,073.08	37.06	0.13	365.57	845.67	1,101,467.49	21,313.26	1,923.56
06	1,133.19	216.47	1,146.37	1,112.08	34.49	0.13	354.87	849.15	1,064,428.09	20,110.75	1,883.26
09	1,036.86	210.10	1,099.68	936.53	33.64	0.12	332.54	799.06	996,181.43	14,859.06	1,800.26
2008 12	1,202.57	229.41	1,027.82	875.03	38.68	0.11	363.86	878.75	1,110,719.01	13,765.16	1,973.04
03	1,325.85	270.31	1,217.50	1,034.77	42.88	0.13	416.93	1,001.39	1,412,508.08	20,292.99	2,279.37
06	1,318.90	256.29	1,242.42	1,151.84	42.13	0.14	405.73	986.15	1,349,073.50	20,161.46	2,226.47
09	1,376.39	259.32	1,316.18	1,245.69	42.44	0.15	408.48	1,005.37	1,414,815.89	23,022.93	2,254.10
2009 12	1,392.03	262.86	1,376.89	1,288.38	43.26	0.15	421.08	1,027.96	1,581,641.21	24,593.21	2,264.28
01	1,384.67	266.34	1,366.28	1,298.70	43.93	0.16	426.58	1,036.60	1,574,630.69	23,545.95	2,265.91
02	1,343.55	264.08	1,368.01	1,287.08	43.86	0.16	426.07	1,029.26	1,610,532.55	23,371.10	2,217.30
03	1,288.87	248.43	1,342.20	1,257.12	42.28	0.15	418.39	977.30	1,519,873.43	23,828.55	2,076.31
04	1,263.83	246.89	1,360.29	1,270.62	42.45	0.15	428.09	999.86	1,602,347.05	24,807.21	2,067.63
05	1,199.73	244.67	1,318.15	1,181.90	42.56	0.15	420.54	987.49	1,681,069.42	25,640.50	2,037.54
06	1,258.47	240.61	1,310.65	1,176.29	42.22	0.15	421.71	981.57	1,690,351.18	25,395.30	2,025.05
07	1,304.95	237.41	1,308.54	1,216.45	41.95	0.15	425.56	994.26	1,583,008.07	23,814.66	2,059.54
08	1,264.62	228.23	1,241.52	1,170.51	41.62	0.14	414.85	961.66	1,610,001.15	24,929.47	1,966.86
09	1,358.12	232.61	1,288.92	1,286.88	43.51	0.15	429.90	1,006.75	1,737,450.81	29,017.17	2,048.65
10	1,297.72	222.24	1,255.81	1,249.56	42.82	0.14	412.63	987.79	1,719,376.27	30,698.45	2,014.34
11	1,247.63	215.84	1,225.49	1,209.10	41.33	0.14	396.09	948.13	1,703,726.55	33,828.93	1,921.45
2010 12	1,332.84	216.45	1,256.91	1,277.58	41.67	0.14	407.48	972.01	1,775,574.30	38,674.15	1,926.40