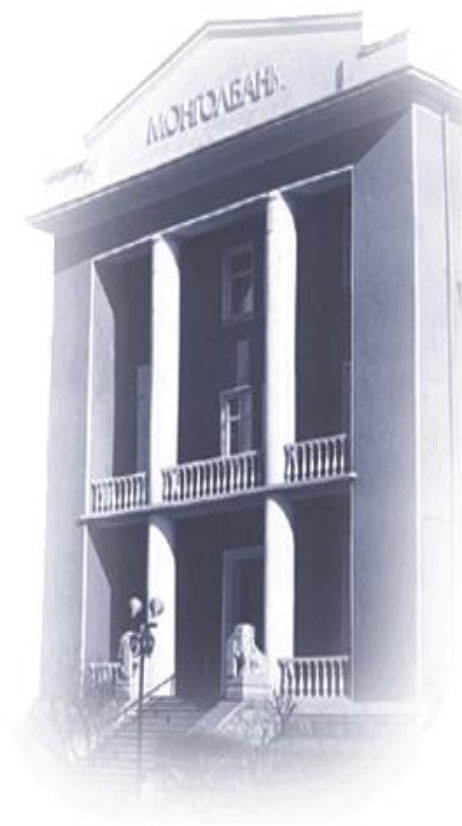


МОНГОЛБАНК  
СТАТИСТИКИЙН САРЫН БЮЛЛЕТЕНЬ



BANK OF MONGOLIA  
Monthly Statistical Bulletin

2015-07

АГУУЛГА  
CONTENTS

Мөнгө, санхүүгийн үзүүлэлтүүдийн жилийн өөрчлөлт Year on year growth rate of monetary and financial aggregates	1	
Мөнгөний нийлүүлэлт Money supply	3	
Хадгаламжийн байгууллагуудын тойм Depository Corporations Survey	5	
Санхүүгийн байгууллагуудын тойм Financial Corporations Survey	15	
Хэрэглээний үнийн индекс Consumer price index	21	
Зээлийн өрийн үлдэгдэл Loans outstanding	27	
Хадгаламжийн хүү Deposit rate	32	
Зээлийн хүү Loan rate	34	Монголбанк Бага тойруу 3 15160 Улаанбаатар-46 Монгол Улс
Банкуудын хадгаламж, зээлийн хүү Interest rate applied by banks	35	
Гадаад худалдааны тэнцэл Trade balance	41	Утас: 11-322074 www.mongolbank.mn
Гадаад валютын зах зээлийн ханш Exchange rates on foreign exchange market	43	The Bank of Mongolia Baga toiruu 3 15160 Ulaanbaatar-46 Mongolia
Улсын нэгдсэн төсвийн гүйцэтгэл The Government budget accounts	45	
Үнэт цаасны зах зээлийн байдал Securities market developments	47	Tel: 976-11-322074 www.mongolbank.mn

**Монгоний нийлүүлэлт**  
**Money supply**

сая төгрөг  
in millions of togrogs

Хугацааны эцэст  End-of-period	Гүйлгээнд гаргасан бэлэн мөнгө Currency issued in circulation		Үүнээс Of which			Мөнгө (M1) Money (M1)		Үүнээс Of which
	дүн  amount	сарын өөрчлөлт %  monthly changes %	Касет байгаа мөнгө  Bank's vault	Хадгаламжийн байгууллагаас гадуурх мөнгө Currency outside depository corporations		дүн  amount	сарын өөрчлөлт %  monthly changes %	Төгрөгийн харилцах  Current account in DC
				дүн amount	сарын өөрчлөлт % monthly changes %			
2000 12	107 394.4	7.8	6 461.0	100 933.4	7.3	130 775.0	8.9	29 841.6
2001 12	119 205.8	5.7	10 045.1	109 160.7	8.2	156 155.3	6.9	46 994.6
2002 12	134 642.8	0.5	13 859.2	120 783.6	1.2	187 727.8	6.9	66 944.1
2003 12	152 826.6	1.1	21 329.9	131 496.7	-2.1	212 833.4	4.4	81 336.7
2004 12	168 521.1	1.7	25 008.4	143 512.7	3.9	221 327.6		77 814.9
2005 12	191 688.3	3.1	39 318.8	152 369.5	-0.4	269 124.4	6.3	116 754.9
2006 12	245 098.9	5.1	59 972.2	185 126.7	2.6	331 903.4	2.1	146 776.7
2007 12	364 074.4	12.5	80 749.1	283 325.3	8.2	590 471.6	13.6	307 146.3
2008 12	407 210.5	23.0	78 486.5	328 724.0	25.0	647 335.3	18.1	318 611.3
2009 12	371 831.9	2.2	86 838.0	284 993.9	2.3	651 247.0	8.4	366 253.2
2010 12	519 692.4	9.9	131 489.8	388 202.7	10.7	1 157 617.9	16.3	769 415.2
01	565 690.3	-8.9	170 922.1	394 768.2	1.7	1 131 534.4	-2.3	736 766.2
02	474 517.4	-16.1	138 076.2	336 441.2	-14.8	1 031 274.1	-8.9	694 833.0
03	531 134.7	11.9	144 313.1	386 821.6	15.0	1 181 542.7	14.6	794 721.1
04	628 571.6	18.3	153 753.1	474 818.5	22.7	1 338 482.3	13.3	863 663.8
05	624 752.2	-0.6	145 813.1	478 939.2	0.9	1 422 762.8	6.3	943 823.7
06	638 773.5	2.2	159 073.3	479 700.2	0.2	1 552 624.4	9.1	1 072 924.2
07	673 939.2	5.5	176 800.3	497 138.9	3.6	1 559 400.7	0.4	1 062 261.9
08	705 791.8	4.7	175 363.1	530 428.7	6.7	1 653 779.0	6.1	1 123 350.3
09	705 251.3	-0.1	180 113.0	525 138.2	-1.0	1 676 234.5	1.4	1 151 096.3
10	694 919.4	-1.5	187 343.0	507 576.4	-3.3	1 622 945.0	-3.2	1 115 368.6
11	678 907.7	-2.3	190 946.8	487 960.9	-3.9	1 552 663.2	-4.3	1 064 702.2
2011 12	713 351.1	5.1	195 857.0	517 494.2	6.1	1 741 075.7	12.1	1 223 581.5
2012 01	656 998.9	-7.9	197 571.7	459 427.3	-11.2	1 565 796.9	-10.1	1 106 369.6
02	673 778.6	2.6	215 380.7	458 397.9	-0.2	1 500 327.8	-4.2	1 041 929.9
03	648 454.6	-3.8	200 372.5	448 082.1	-2.3	1 488 163.7	-0.8	1 040 081.6
04	708 876.4	9.3	210 050.7	498 825.7	11.3	1 595 806.6	7.2	1 096 980.9
05	782 922.5	10.4	187 269.2	595 653.3	19.4	1 741 358.4	9.1	1 145 705.1
06	891 527.8	13.9	228 596.4	662 931.5	11.3	1 797 175.2	3.2	1 134 243.8
07	801 409.3	-10.1	209 693.3	591 716.0	-10.7	1 660 362.3	-7.6	1 068 646.3
08	814 882.5	1.7	223 623.9	591 258.7	-0.1	1 681 086.8	1.2	1 089 828.2
09	745 629.7	-8.5	193 840.6	551 789.1	-6.7	1 658 017.5	-1.4	1 106 228.4
10	717 559.2	-3.8	216 271.6	501 287.6	-9.2	1 578 738.0	-4.8	1 077 450.3
11	722 110.5	0.6	220 890.6	501 220.0	0.0	1 557 134.1	-1.4	1 055 914.1
12	828 450.3	14.7	225 085.0	603 365.3	20.4	1 834 894.1	17.8	1 231 528.8
2013 01	742 095.5	-10.4	226 997.2	515 098.3	-14.6	1 579 396.5	-13.9	1 064 298.2
02	675 601.5	-9.0	209 119.2	466 482.3	-9.4	1 480 366.9	-6.3	1 013 884.6
03	687 718.8	1.8	205 061.0	482 657.7	3.5	1 589 180.2	7.4	1 106 522.4
04	759 822.5	10.5	228 295.1	531 527.4	10.1	1 668 296.9	5.0	1 136 769.5
05	830 979.7	9.4	233 190.4	597 789.3	12.5	1 779 178.3	6.6	1 181 389.0
06	835 813.3	0.6	235 778.9	600 034.4	0.4	2 026 501.7	13.9	1 426 467.3
07	832 173.6	-0.4	245 126.3	587 047.3	-2.2	1 927 595.6	-4.9	1 340 548.3
08	867 821.9	4.3	237 157.0	630 664.9	7.4	1 950 472.6	1.2	1 319 807.8
09	874 965.7	0.8	277 479.2	597 486.4	-5.3	2 016 712.3	3.4	1 419 225.9
10	824 792.1	-5.7	245 402.2	579 389.9	-3.0	1 938 258.2	-3.9	1 358 868.3
11	803 911.5	-2.5	246 227.8	557 683.7	-3.7	1 826 929.8	-5.7	1 269 246.1
12	841 129.3	4.6	259 095.2	582 034.1	4.4	2 093 197.7	14.6	1 511 163.6
2014 01	894 289.7	6.3	274 993.8	619 295.9	6.4	1 963 134.7	-6.2	1 343 838.8
02	756 630.8	-15.4	242 061.1	514 569.7	-16.9	1 755 175.7	-10.6	1 240 606.0
03	801 171.5	5.9	251 357.2	549 814.3	6.8	1 737 315.8	-1.0	1 187 501.5
04	841 608.9	5.0	250 233.8	591 375.0	7.6	1 845 703.9	6.2	1 254 328.9
05	863 001.8	2.5	266 794.7	596 207.0	0.8	1 826 340.0	-1.0	1 230 132.9
06	860 041.0	-0.3	288 893.4	571 147.6	-4.2	1 862 126.7	2.0	1 290 979.1
07	859 579.7	-0.1	404 419.5	455 160.2	-20.3	1 698 459.4	-8.8	1 243 299.2
08	880 080.1	2.4	264 114.0	615 966.1	35.3	1 874 699.0	10.4	1 258 732.9
09	827 298.6	-6.0	291 120.9	536 177.7	-13.0	1 836 379.6	-2.0	1 300 201.8
10	809 649.4	-2.1	321 457.1	488 192.3	-8.9	1 751 772.8	-4.6	1 263 580.5
11	768 989.6	-5.0	345 367.0	423 622.6	-13.2	1 689 756.9	-3.5	1 266 134.3
12	809 657.1	5.3	310 399.4	499 257.7	17.9	1 816 717.7	7.5	1 317 460.1
2015 01	732 356.3	-9.5	263 637.5	468 718.8	-6.1	1 578 978.0	-13.1	1 110 259.2
02	775 894.6	5.9	324 988.7	450 905.9	-3.8	1 586 787.6	0.5	1 135 881.7
03	702 826.6	-9.4	312 276.4	390 550.2	-13.4	1 446 134.1	-8.9	1 055 584.0
04	734 889.1	4.6	342 572.3	392 316.7	0.5	1 481 051.6	2.4	1 088 734.9
05	793 731.9	8.0	275 268.8	518 463.1	32.2	1 689 712.2	14.1	1 171 249.1
06	755 796.8	-4.8	325 285.7	430 511.1	-17.0	1 664 231.3	-1.5	1 233 720.2
07	758 991.0	0.4	305 243.1	453 747.9	5.4	1 654 284.5	-0.6	1 200 536.6

1 Тухайн сард хадгаламж эзлийн хориооны үзүүлэлтийг нэвтгэж тооцож  
1 Data of Savings and Credit Cooperatives was included in Broad Money







**Төвбанк, Хадгаламжийн байгууллагуудын тойм**  
**Depository Corporations Survey**

үргэлжлэл  
*continued*

Хугацааны эцэст <i>End-of-period</i>	Монго  <i>Money</i>	Нийт хадгаламж, Валютын харицах  <i>Total deposits &amp; foreign currency current account</i>	ОУБС-ийн үзэл Сангийн яам*  <i>DMF Loan Ministry of Finance*</i>	Хөнгөлбөрийн ээхийн эх үүсвэр  <i>Government lending loans</i>	Бусад зүйл (нэгж)  <i>Other items (net)</i>
2000 12	130 775.0	128 067.7			27 685.4
2001 12	156 155.3	174 908.9			18 360.9
2002 12	187 727.8	282 397.8			38 409.2
2003 12	212 833.4	490 499.0			67 624.3
2004 12	221 327.6	625 704.9			111 277.8
2005 12	269 124.4	871 014.4		17 272.7	181 791.8
2006 12	331 903.4	1 204 590.0		18 765.0	321 918.9
2007 12	590 471.6	1 810 778.1		17 620.0	262 709.3
2008 12	647 335.3	1 622 666.2		18 122.4	457 330.8
01	535 268.2	1 665 977.3		18 495.5	494 258.4
02	549 886.6	1 764 924.4		19 458.1	520 452.9
03	511 386.8	1 841 171.2		20 449.5	493 103.7
04	517 897.9	1 823 929.6		18 775.8	467 046.0
05	559 144.5	1 845 529.7		19 767.1	459 796.3
06	544 382.1	1 894 865.5		19 879.3	462 881.8
07	521 831.8	1 987 939.3		20 198.0	487 898.3
08	597 140.1	1 966 857.2		20 168.5	479 229.3
09	622 707.3	2 030 707.4		20 421.0	506 925.7
10	608 778.2	2 062 242.6		20 592.0	535 727.8
11	600 593.4	2 114 668.4		21 115.6	587 367.5
2009 12	651 247.0	2 228 786.8		20 201.7	570 466.3
01	629 701.0	2 241 310.1		19 995.3	648 344.5
02	627 897.5	2 353 955.3		19 177.2	664 557.9
03	693 003.0	2 281 480.3		18 075.6	588 954.2
04	754 299.9	2 408 657.9		17 786.0	549 809.9
05	795 971.6	2 458 107.6		16 923.1	558 658.7
06	839 932.0	2 683 675.2		16 456.8	544 942.5
07	826 662.4	2 716 472.8		17 251.7	543 239.1
08	932 036.2	2 725 373.0		16 247.5	504 305.4
09	959 096.3	2 892 619.1		17 499.9	528 653.9
10	1 000 575.4	2 872 484.9		19 034.8	481 583.1
11	995 746.4	2 943 893.7		17 873.9	410 509.6
2010 12	1 157 617.9	3 522 363.5		17 781.0	471 504.4
01	1 131 534.4	3 673 919.9		18 171.1	454 279.9
02	1 031 274.1	3 836 157.5		18 453.8	361 833.2
03	1 181 542.7	3 773 586.1		17 856.7	380 676.4
04	1 338 482.3	4 012 030.3		19 530.3	501 606.6
05	1 422 762.8	4 006 154.0		16 854.6	446 490.7
06	1 552 624.4	4 219 933.5		17 181.1	540 106.4
07	1 559 400.7	4 360 991.7		17 153.5	584 882.9
08	1 653 779.0	4 249 456.1		17 083.4	551 106.1
09	1 676 234.5	4 377 634.3		16 657.5	670 251.4
10	1 622 945.0	4 455 359.6		17 419.3	663 447.8
11	1 552 663.2	4 560 531.7		17 064.5	716 004.4
2011 12	1 741 075.7	4 671 183.6		17 133.5	909 030.4
01	1 565 796.9	4 581 661.8		17 050.7	905 855.9
02	1 500 327.8	4 737 242.4		16 925.2	862 243.0
03	1 488 163.7	4 616 653.9		16 665.7	1 637 095.9
04	1 595 806.6	4 767 102.1		16 467.7	1 615 313.2
05	1 741 358.4	4 988 250.9		15 606.2	1 576 047.1
06	1 797 175.2	5 254 022.5		15 710.8	1 669 223.2
07	1 660 362.3	5 293 169.2		15 575.5	1 625 995.0
08	1 681 086.8	5 316 061.1		16 202.8	1 716 799.9
09	1 658 017.5	5 454 218.5		17 040.1	1 600 459.3
10	1 578 738.0	5 553 907.1		17 108.1	1 274 209.7
11	1 557 134.1	5 476 176.7		17 131.0	1 316 442.0
12	1 834 894.1	5 778 910.9	222 553.6	17 031.9	496 773.5
2013 01	1 579 396.5	5 761 427.5	207 088.0	17 363.1	614 154.9
02	1 480 366.9	5 761 632.7	205 208.1	16 997.0	718 349.4
03	1 589 180.2	5 715 499.2	187 735.4	16 722.0	800 963.1
04	1 668 296.9	5 519 577.9	178 034.5	17 336.0	782 490.2
05	1 779 178.3	6 142 668.0	177 966.8	17 302.2	664 646.3
06	2 026 501.7	5 988 809.3	160 034.4	17 107.2	662 376.0
07	1 927 595.6	6 171 880.2	153 052.1	18 070.2	701 387.9
08	1 950 472.6	6 471 348.0	165 082.7	19 449.6	1 110 607.0
09	2 016 712.3	6 477 112.6	145 018.6	20 101.9	1 364 740.5
10	1 938 258.2	6 790 090.7	135 628.6	21 337.5	1 443 664.2
11	1 826 929.8	7 274 507.8	136 952.6	21 451.2	1 600 628.8
12	2 093 197.7	7 361 734.9	107 751.6	20 184.9	1 271 703.8
2014 01	1 963 134.7	8 058 724.0	94 740.1	20 888.2	1 269 819.9
02	1 755 175.7	8 092 603.2	98 774.6	21 728.0	1 588 776.3
03	1 737 315.8	8 212 118.1	73 890.5	21 657.6	1 838 312.7
04	1 845 703.9	8 357 611.4	56 998.0	22 019.1	1 889 598.8
05	1 826 340.0	8 414 191.2	57 268.6	21 906.5	1 828 941.4
06	1 862 126.7	8 244 906.0	32 409.2	21 636.8	1 851 549.9
07	1 698 459.4	8 379 767.2	33 007.8	21 855.6	1 594 162.9
08	1 874 699.0	8 261 298.9	31 725.7	20 957.9	1 787 851.6
09	1 836 379.6	8 237 957.6	15 777.1	20 373.0	2 094 757.9
10	1 751 772.8	8 221 477.7	15 935.4	24 604.5	1 949 293.7
11	1 689 756.9	8 238 384.8	15 952.7	20 611.1	1 803 171.4
12	1 816 717.7	8 819 093.5	5 234.6	19 722.1	1 737 394.7
2015 01	1 578 978.0	8 735 618.7	5 249.1	19 149.3	1 160 290.3
02	1 586 787.6	8 643 673.3	5 350.8	19 300.8	1 162 587.4
03	1 446 134.1	8 457 566.8	0.0	18 717.8	1 502 863.9
04	1 481 051.6	8 223 940.4	0.0	18 714.8	1 535 842.0
05	1 689 712.2	8 156 114.1	0.0	18 122.5	1 511 454.6
06	1 664 231.3	8 377 043.5	0.0	18 472.6	1 045 915.8
07	1 654 284.5	8 207 715.3	0.0	18 591.4	1 342 368.6

*Түвшин сард хадгаламж, тээхийн харицахыг уургаар тусгайгаар оруулсан*

*1 Data of Savings and Credit Cooperatives was included in Broad Money*





Төв банкны тойм  
Central Bank Survey

үргэлжлэл  
continued

Хугацааны эцэст End-of-period	Ноёд монго Monetary base	Үүнийг Of which					Хувианг ба гадаад валютын хадгаламж  Time Savings & Foreign currency deposits
		Банзнаас гадурх монго  Currency outside banks	Бансуудын касс  Bank's cash	Бансуудын харилдах хадгаламж  Banks' deposits	Хувийн байгууллагын хадгаламж  Private sectors deposits	Улсын байгууллагын хадгаламж  Public sectors deposits	
2000 12	132 932.4	100 933.4	6 461.0	25 538.0			
2001 12	143 785.4	109 160.7	10 045.1	24 579.6			
2002 12	175 305.4	120 783.6	13 859.2	40 662.6			
2003 12	200 795.5	131 496.7	21 329.9	47 968.8			
2004 12	234 905.4	143 512.7	25 008.4	66 384.3			
2005 12	281 236.3	152 369.5	39 318.8	89 548.0			
2006 12	381 792.0	185 126.7	59 931.8	136 733.5			
2007 12	535 047.7	283 325.3	80 695.9	171 026.5			
2008 12	633 682.0	328 724.0	78 431.5	226 526.5			
01	578 299.5	278 335.9	68 239.5	231 724.0			
02	648 330.2	305 664.2	91 568.5	251 097.6			
03	587 775.2	272 600.7	65 620.1	249 554.4			
04	536 077.4	287 660.5	67 893.1	180 523.8			
05	556 513.7	308 010.7	73 087.0	175 416.0			
06	749 832.2	283 798.8	73 901.0	392 132.3			
07	659 996.6	274 273.9	76 311.0	309 411.8			
08	695 029.1	300 428.7	83 638.1	310 962.3			
09	658 907.5	282 417.7	81 011.2	295 478.6			
10	730 344.2	274 566.4	85 031.6	370 746.2			
11	601 419.1	278 593.0	85 261.1	237 565.0			
2009 12	733 060.9	284 993.9	86 783.7	361 283.4			
01	626 879.8	260 504.7	90 168.6	276 206.5			
02	663 152.9	258 174.4	92 527.5	312 451.0			
03	678 070.5	294 328.0	88 523.7	295 218.7			
04	745 982.6	339 652.7	103 686.8	302 643.2			
05	712 997.6	356 869.5	103 974.4	252 153.7			
06	838 829.6	348 905.7	97 028.9	392 895.0			
07	773 709.3	344 483.7	106 355.5	322 870.1			
08	738 649.3	354 555.4	111 421.3	272 672.5			
09	778 315.0	343 777.0	107 371.2	327 166.8			
10	807 334.9	352 735.2	108 047.7	346 552.0			
11	772 744.6	350 639.0	120 918.8	301 186.8			
2010 12	945 477.3	388 202.7	130 144.9	427 129.7			
01	893 825.3	394 768.2	169 247.2	329 810.0			
02	849 045.5	336 441.2	136 565.1	376 039.2			
03	1 019 193.8	386 821.6	142 800.9	489 571.2			
04	1 163 836.5	474 818.5	152 242.9	536 775.1			
05	1 272 422.6	478 939.2	144 106.2	649 377.3			
06	1 259 892.1	479 700.2	157 363.2	622 828.7			
07	1 328 566.2	497 138.9	175 095.2	656 332.2			
08	1 289 789.1	530 428.7	173 792.3	585 568.1			
09	1 398 844.0	525 138.2	178 534.5	695 171.3			
10	1 484 223.5	507 576.4	185 771.2	790 875.9			
11	1 516 592.5	487 960.9	189 041.9	839 589.8			
2011 12	1 659 753.3	517 494.2	193 967.0	948 292.1			
01	1 553 309.9	459 427.3	195 659.8	898 222.9			
02	1 516 624.6	458 397.9	213 423.1	844 803.6			
03	1 814 594.9	448 082.1	198 432.9	1 168 079.8			
04	1 703 941.4	498 825.7	208 111.5	997 004.2			
05	1 825 322.5	595 653.3	185 079.4	1 044 589.9			
06	2 281 350.3	662 931.5	226 406.8	1 392 012.0			
07	1 947 278.2	591 716.0	207 501.0	1 148 061.2			
08	1 943 101.4	591 258.7	221 106.5	1 130 736.2			
09	2 404 182.6	551 789.1	191 327.0	1 661 066.4			
10	2 148 057.4	501 287.6	213 657.5	1 433 112.4			
11	2 224 661.0	501 220.0	218 667.7	1 504 773.3			
12	2 165 704.9	603 365.3	222 340.6	1 339 999.0			
2013 01	2 165 579.1	515 098.3	223 949.6	1 426 531.2			
02	2 270 599.5	466 482.3	206 353.1	1 597 764.1			
03	2 468 205.6	482 657.7	202 950.9	1 782 597.0			
04	2 497 951.9	531 527.4	226 192.0	1 740 232.5			
05	2 800 873.6	597 789.3	231 088.5	1 971 995.8			
06	3 508 991.4	600 034.4	233 386.9	2 675 570.1			
07	3 102 771.1	587 047.3	242 740.0	2 272 983.8			
08	2 601 735.2	630 664.9	234 764.1	1 736 306.2			
09	2 943 077.0	597 486.4	275 078.3	2 070 512.3			
10	2 643 735.4	579 389.9	243 057.8	1 821 287.8			
11	2 823 209.7	557 683.7	243 894.2	2 021 631.8			
12	3 335 459.2	582 034.1	256 646.8	2 496 778.2			
2014 01	2 957 416.0	619 295.9	272 526.0	2 065 594.0			
02	3 131 133.3	514 569.7	239 607.4	2 376 956.2			
03	3 127 496.7	549 814.3	248 905.9	2 328 776.5			
04	2 598 778.3	591 375.0	247 738.7	1 759 664.6			
05	3 007 819.6	596 207.0	264 260.4	2 147 352.3			
06	2 882 195.5	571 147.6	286 359.4	2 024 688.6			
07	2 905 134.4	455 160.2	401 881.7	2 048 092.5			
08	2 814 786.5	615 966.1	261 023.6	1 937 796.9			
09	2 826 512.0	536 177.7	288 030.2	2 002 304.2			
10	2 707 667.7	488 192.3	318 374.0	1 901 101.4			
11	2 679 463.0	423 622.6	342 283.8	1 913 556.6			
12	3 426 528.0	499 257.7	307 325.4	2 619 944.9			
2015 01	2 858 727.6	468 718.8	260 549.6	2 129 459.2			
02	2 748 026.6	450 905.9	321 868.4	1 975 252.3			
03	2 468 503.4	390 550.2	309 157.9	1 768 795.4			
04	2 205 588.7	392 316.7	339 465.3	1 473 806.7			
05	2 410 769.8	518 463.1	272 662.8	1 619 643.9			
06	2 352 185.7	430 511.1	322 679.1	1 598 995.6			
07	2 977 652.4	453 747.9	302 289.0	2 221 615.6			











**Санхүүгийн байгууллагуудын тойм**  
**Financial corporations survey**

сая төгрөг  
in millions of togrogs

Хугацааны эцэст	Гадаад цэвэр актив	Дотоодын ээл (цэвэр)	Үүнээс	
			Of which	
			Засгийн газар	Үүнээс: Of which:
End-of-period	Net foreign assets	Domestic credit (net)	General Government	Төв Засгийн газар Central Government
1999 12	167 541.5	116 635.6	34 555.7	
2000 12	201 696.9	84 831.1	17 171.2	
2001 12	220 165.7	129 259.5	-6 829.1	
2002 12	308 507.4	200 027.4	-32 439.3	
2003 12	256 341.5	514 615.2	96 687.3	
2004 12	311 005.2	646 850.0	40 506.5	45 022.0
2005 12	570 198.7	768 505.8	-90 847.2	-87 822.4
2006 12	1 131 772.5	743 807.7	-477 882.5	-470 640.1
2007 12	1 352 046.2	1 326 704.3	-726 528.0	-719 606.1
2008 12	683 478.2	2 058 564.4	-573 575.1	-566 471.1
2009 12	1 532 827.5	1 933 163.1	-717 126.1	-709 477.0
2010 03	1 439 459.5	2 178 977.6	-629 417.9	-623 859.7
06	1 797 632.0	2 329 485.5	-599 207.2	-591 966.0
09	2 096 505.7	2 348 807.9	-787 055.7	-779 067.2
12	2 736 016.4	2 478 983.7	-835 523.9	-829 644.2
2011 03	2 613 967.8	2 790 891.5	-996 777.3	-989 064.4
06	2 943 481.5	3 449 704.1	-1 173 940.0	-1 163 042.2
09	3 033 837.7	3 765 565.2	-1 360 911.5	-1 351 921.0
12	3 055 546.7	4 354 219.2	-1 371 073.4	-1 363 784.1
2012 03	3 341 200.3	4 489 092.9	-1 378 430.1	-1 347 814.7
06	2 632 492.3	5 391 730.2	-1 031 201.1	-1 019 064.6
09	2 014 176.3	6 060 877.0	-1 004 831.4	-995 033.1
12	3 806 033.9	4 509 985.1	-3 040 624.5	-3 033 694.1
2013 03	3 285 344.0	5 164 304.0	-3 011 789.5	-2 997 903.1
06	1 974 117.7	6 795 346.8	-2 962 476.0	-2 951 998.7
09	970 327.6	8 539 646.9	-3 227 793.8	-3 219 871.8
12	60 613.9	9 954 605.6	-3 029 591.1	-3 025 676.2
2014 03	-923 831.0	11 029 441.9	-3 016 980.2	-2 984 709.4
06	-2 184 719.2	12 378 341.0	-2 764 167.1	-2 740 271.9
09	-3 050 573.5	13 263 519.2	-2 778 255.2	-2 757 333.7
12	-4 180 549.4	15 213 341.3	-2 169 088.8	-2 143 125.1
2015 03	-5 539 963.2	15 692 655.0	-1 962 664.8	-1 926 466.4
04	-5 755 768.9	15 786 596.0	-1 890 287.8	-1 854 463.8
05	-5 539 977.1	15 841 310.9	-1 780 849.6	-1 744 472.6
06	-5 505 682.9	15 815 124.8	-1 960 296.5	-1 925 437.0
07	-5 788 731.3	16 146 210.4	-1 867 944.4	-1 838 463.9

<sup>1</sup> 2008 оны 12-р сараас эхлэн ОУВС-ийн ЯЕХД хөтөлбөрийн эзэлийн тооцоог ЗГ-аас авах авчиралд оруулж тооц

<sup>1</sup> From December 2008 the Settlement on PRGF loan was included in Net Domestic Credit, particularly in Claims on G

<sup>2</sup> Тухайн сард хайгууламж эзэлийн хориооны үзүүлэлтийг нэвтгэж тооцог

<sup>2</sup> Data of Savings and Credit Cooperatives was included in Broad Money

Санхүүгийн байгууллагуудын тойм  
Financial corporations survey

үргэлжлэл  
continued

Хугацааны эндэгт End-of-period					
	Орон нутгийн тосов Local Government	Улсын байгууллага	Хувийн байгууллага	Иргэд	Бусад
		Public sector	Private sector	Individuals	Other
1999 12		8 564.5	31 408.6		
2000 12		6 281.5	45 482.9		
2001 12		10 402.0	114 670.4		
2002 12		12 184.9	203 567.2		
2003 12		16 203.6	365 024.4		
2004 12	-4 515.6	13 125.7	365 057.9	210 931.1	17 228.9
2005 12	-3 024.9	34 169.2	489 064.7	321 606.8	14 512.4
2006 12	-7 242.4	36 731.6	659 019.3	507 570.0	18 369.3
2007 12	-6 921.9	27 331.8	1 166 149.5	838 778.5	20 972.4
2008 12	-7 104.0	34 794.6	1 570 398.9	1 013 694.2	13 251.7
2009 12	-7 649.1	20 429.4	1 716 253.8	904 892.3	8 713.7
2010 03	-5 558.2	16 948.8	1 760 220.7	1 015 896.2	15 329.8
06	-7 241.2	15 592.9	1 806 502.8	1 096 347.0	10 250.0
09	-7 988.5	37 686.6	1 808 074.9	1 280 652.2	9 450.1
12	-5 879.7	17 073.9	1 854 774.6	1 433 029.7	9 629.5
2011 03	-7 712.9	13 029.5	2 099 485.9	1 667 399.5	7 753.9
06	-10 897.8	16 160.3	2 568 669.9	2 030 617.7	8 196.1
09	-8 990.5	27 143.3	2 770 747.4	2 320 113.9	8 472.1
12	-7 289.3	100 646.0	3 064 543.2	2 554 213.0	5 890.4
2012 03	-30 615.4	50 675.2	3 154 928.2	2 655 002.0	6 917.5
06	-12 136.5	71 278.4	3 451 365.5	2 892 421.2	7 866.2
09	-9 798.4	155 625.4	3 730 255.2	3 168 990.6	10 837.2
12	-6 930.3	402 467.4	3 913 008.5	3 223 565.3	11 568.4
2013 03	-13 886.4	609 835.5	4 047 757.4	3 508 327.4	10 173.2
06	-10 477.3	977 692.9	4 815 767.3	3 953 189.5	11 173.1
09	-7 921.9	1 407 157.1	5 620 929.8	4 721 918.4	17 435.4
12	-3 914.9	1 892 147.8	6 274 588.1	4 810 017.8	7 443.0
2014 03	-32 270.7	2 251 677.8	6 238 581.1	5 550 474.9	5 688.2
06	-23 895.2	2 395 306.9	6 656 349.2	6 083 315.7	7 536.4
09	-20 921.5	2 706 584.9	6 848 894.9	6 477 082.6	9 212.0
12	-25 963.7	3 164 974.0	7 479 730.5	6 727 489.3	10 236.3
2015 03	-36 198.4	3 139 654.3	7 476 769.1	7 030 711.0	8 185.5
04	-35 824.0	3 136 900.6	7 440 082.4	7 092 625.8	7 275.0
05	-36 377.0	3 222 462.1	7 248 601.4	7 145 370.4	5 726.6
06	-34 859.5	3 298 250.8	7 262 869.4	7 208 655.0	5 646.2
07	-29 480.5	3 447 566.1	7 319 060.4	7 237 518.8	10 009.6

<sup>1</sup>Тухайн сард хадгаламж эзэлгйн хэргийг үзүүлэлтийг нэгтгэж тооцов

<sup>1</sup> Data of Savings and Credit Cooperatives was included in Broad Money



**Санхүүгийн байгууллагуудын тойм**  
**Financial corporations survey**

үргэлжлэл  
 continued

Хугацааны эцэст	Санхүүгийн байгууллагуудаас гадуурх мөнгө	Харицах, Хадгаламж	Хөтөлбөрийн ээлийн эх үүсвэр	Бусад зүйл (цэвэр)
End-of-period	Currency outside financial corporations	Deposits	Government lending loans	Other items (net)
1999 12	87 281.3	105 341.3		64 010.1
2000 12	100 933.4	157 909.2		27 685.4
2001 12	109 160.7	221 903.6		18 360.9
2002 12	120 783.6	349 342.0		38 409.2
2003 12	131 496.7	571 835.7		67 624.3
2004 12	143 512.7	703 519.7		110 822.7
2005 12	152 369.5	987 769.3	17 272.7	181 791.8
2006 12	185 126.7	1 351 366.7	18 765.0	320 321.7
2007 12	283 325.3	2 117 924.4	17 620.0	259 880.7
2008 12	328 724.0	1 941 277.4	18 122.4	453 918.7
2009 12	284 993.9	2 595 040.0	20 201.7	565 755.1
2010 03	294 303.8	2 680 155.2	18 075.6	625 902.5
06	348 882.6	3 174 701.5	16 456.8	587 076.6
09	343 754.5	3 507 938.3	17 499.9	576 120.9
12	388 179.9	4 291 778.8	17 781.0	517 260.5
2011 03	386 793.5	4 568 307.2	17 856.7	431 901.8
06	479 673.2	5 292 857.7	17 181.1	603 473.6
09	525 108.8	5 528 730.6	16 657.5	728 906.0
12	517 462.4	5 894 765.2	17 133.5	980 404.8
2012 03	448 055.9	5 656 735.5	16 665.7	1 708 836.1
06	662 897.8	6 388 267.3	15 710.8	957 346.7
09	551 754.6	6 566 543.9	17 040.1	939 714.8
12	603 331.3	7 016 536.6	17 031.9	679 119.2
2013 03	482 622.1	6 844 753.9	16 722.0	1 105 550.0
06	599 992.6	7 451 874.5	17 107.2	700 490.3
09	597 444.0	7 926 004.9	20 101.9	966 423.7
12	581 989.6	8 889 077.5	20 184.9	523 967.5
2014 03	549 758.9	9 418 556.8	21 657.6	115 637.7
06	571 089.6	9 539 509.8	21 636.8	61 385.6
09	536 114.5	9 542 838.4	20 373.0	113 619.8
12	499 193.2	10 138 907.2	19 722.1	374 969.3
2015 03	390 487.5	9 525 505.0	18 717.8	217 981.5
04	392 254.3	9 327 853.6	18 714.8	292 004.4
05	518 399.9	9 335 617.8	18 122.5	429 193.6
06	430 448.6	9 614 547.4	18 472.6	245 973.2
07	453 677.2	9 412 973.4	18 591.4	472 237.0

<sup>1</sup> Тухайн сард хадгаламж эзэлийн хориооны үзүүлэлтийг нэвтгэж тооцов

<sup>1</sup> Data of Savings and Credit Cooperatives was included in Broad Money

**Бусад санхүүгийн байгууллагуудын тойм**  
**Other financial corporations survey**

сая төгрөг  
in millions of togrogs

Хугацааны эцэст <i>End-of-period</i>	Касс  <i>Cash in vault</i>	Гадаад актив  <i>Foreign assets</i>	Авлага <i>Claims on</i>			
			Засгийн газар  <i>General Government</i>	Үүнгээс: Of which:		Бусад санхүүгийн байгууллага  <i>Other financial corporations</i>
				Тов Засгийн газар <i>Central Government</i>	Орон нутгийн төсөв <i>Local Government</i>	
1999 12						
2000 12						
2001 12						
2002 12						
2003 12						
2004 12						
2005 12						
2006 12						
2007 12						
2008 12						
2009 12						
2010 03	24.2					
06	23.1					
09	22.5					
12	22.8					
2011 03	28.1					
06	27.0					
09	29.5					
12	31.7					
2012 03	26.2					
06	33.7	12.0				
09	34.5	4.0				
12	34.0	3.7				
2013 03	35.6	3.3				
06	41.8	2.7	3 857.3	3 857.3		
09	42.5	16.6	3 857.3	3 857.3		
12	44.6	24.3	8 132.7	8 132.7		
2014 03	55.4	25.6	8 236.5	8 236.5		
06	58.0	21.3	8 236.5	8 236.5		
09	63.2	16.5	24 041.3	24 041.3		
12	64.4	12.6	281 087.7	281 087.7		
2015 03	62.7	11.9	283 355.6	283 355.6		
04	62.4	14.3	286 963.8	286 963.8		
05	63.2	11.2	281 963.2	281 963.2		
06	62.5	2.7	136 991.6	136 991.6		
07	70.6	673.4	140 614.3	140 614.3		

Бусад санхүүгийн байгууллагуудын тойм

Other financial corporations survey

сая төгрөг

in millions of togrogs

Хугацааны эцэст End-of-period	Зээл Loans			
	Улсын байгууллага <i>Public sector</i>	Хувийн байгууллага <i>Private sector</i>	Иргэд <i>Individuals</i>	Бусад <i>Other</i>
	1999 12			
2000 12				
2001 12				
2002 12				
2003 12				
2004 12				
2005 12				
2006 12				
2007 12				
2008 12				
2009 12				
2010 03			51 861.0	
06			57 418.0	
09			62 257.2	
12			63 797.2	
2011 03			71 316.3	
06			85 804.1	
09			85 683.4	
12			101 528.0	
03			102 462.1	
06	7 169.5	0.0	109 350.9	0.0
09	84 339.1	0.0	124 301.6	0.0
2012 12	360 507.6	85 287.0	126 161.5	0.0
2013 03	578 180.2	86 403.3	132 348.0	0.0
06	930 538.3	88 599.6	141 317.7	0.0
09	1 347 556.5	131 425.4	155 569.8	0.0
12	1 811 601.5	275 775.3	151 738.3	0.0
2014 03	2 177 793.5	12 245.0	483 720.1	0.0
06	2 320 310.9	65 447.0	480 625.0	0.0
09	2 562 045.1	194 016.3	697 516.4	0.0
12	3 036 423.0	499 580.0	1 019 074.2	0.0
2015 03	3 042 173.9	500 602.6	1 484 725.9	0.0
04	3 044 906.9	498 717.1	1 476 277.5	0.0
05	3 135 142.6	486 434.8	1 467 373.5	0.0
06	3 202 424.4	517 647.0	1 751 152.9	0.0
07	3 336 067.6	594 961.2	1 770 078.9	0.0

Бусад санхүүгийн байгууллагуудын тойм  
Other financial corporations survey

сая төгрөг  
in millions of togrogs

Хугацааны эцэст End-of-period	Төгрөгийн харилцах  Demand deposits	Нийт хадгаламж, Валютын харилцах  Total deposits & foreign currency current account	Үнэт цаас  Securities other than shares	Зээл  Loans	Гадаад пассив  Foreign liabilities	Засгийн газрын хадгаламж  General Government deposits	Үүнээс:		Өөрийн хоринго  Capital accounts
							Төв ЗГ-ын хадгаламж		
							Of which		
							Central Government deposits		
1999 12									
2000 12									
2001 12									
2002 12									
2003 12									
2004 12									
2005 12									
2006 12									
2007 12									
2008 12									
2009 12									
2010 03					12 057.4	2 392.4	530.7	530.7	79 217.7
06					11 855.2	3 575.9	376.4	376.4	85 749.3
09					13 503.0	2 518.6	548.4	548.4	89 437.5
12					16 316.2	3 269.3	727.0	727.0	91 961.5
2011 03					16 143.9	4 944.6	695.4	695.4	101 704.6
06					19 355.8	6 212.2	1 300.3	1 300.3	119 933.0
09					26 424.2	7 486.0	1 288.2	1 288.2	123 484.3
12					21 137.4	11 892.7	823.5	823.5	138 182.4
03					28 395.2	13 601.1	701.9	701.9	142 722.9
06	0.0	1.1			31 367.6	815 909.0	758.2	758.2	185 648.0
09	6 090.0	7.0			31 656.6	850 703.7	679.0	679.0	203 028.3
12	6 090.0	7.0	84.6		32 452.0	818 136.8	810.0	810.0	246 577.1
2013 03	0.0	22 732.3	0.0		44 195.1	832 535.2	1 120.0	1 120.0	267 998.0
06	2 136.2	34 461.7	376.8		47 746.9	965 261.6	433 565.4	433 565.4	276 747.2
09	869.8	30 606.4	1 192.8		56 673.5	1 109 698.4	962 048.9	962 048.9	376 186.8
12	10 769.4	5 409.6	1 235.0		74 568.5	981 000.6	1 989 376.1	1 989 376.1	403 553.5
2014 03	5 616.8	1 348.9	487 461.0		81 533.1	1 486 905.7	2 378 940.9	2 378 940.9	449 526.2
06	2 184.1	1 411.3	478 409.1		100 214.5	1 532 193.9	2 515 866.7	2 515 866.7	496 219.7
09	377.6	3 914.1	691 131.4		115 238.5	2 094 283.2	2 520 116.0	2 520 116.0	585 640.2
12	708.4	3 446.8	1 001 697.5		110 179.2	2 483 908.7	2 556 463.3	2 556 463.3	646 581.1
2015 03	178.8	6 226.0	1 430 433.3		107 336.2	2 491 572.5	2 558 176.8	2 558 176.8	670 999.0
04	158.9	9 070.0	1 408 512.8		107 336.2	2 471 196.9	2 552 843.8	2 552 843.8	665 207.9
05	158.9	8 095.6	1 401 038.7		107 336.2	2 395 038.5	2 537 997.2	2 537 997.2	695 811.2
06	1 149.0	2 634.7	1 534 022.1		107 336.2	2 507 000.9	2 550 377.0	2 550 377.0	692 527.9
07	122.9	4 598.6	1 520 897.3		112 356.8	2 544 454.2	2 559 088.9	2 559 088.9	700 828.6

**Хэрэглээний барааны үнийн индекс**  
**Consumer price index**

хувиар  
in percent

Хугацааны эцэст  End of period	Хүнсний бараа, согтууруулах бус ундаа  Food & non-alcoholic beverages	Үүнээс Of which								Согтууруулах бус ундаа  Non-alcoholic beverages	
		Хүнс  Food	Үүнээс Of which					Саахар, чихэр  Sugar, candy	Хүнсний ногоо  Vegetables		Өөх, тос  Oils & fats
			Галх, гурил будаа  Bread, flour, cereals	Мах, махан бүтээгдэхүүн  Meat, meat products	Сүү, сүүн бүтээгдэхүүн, ондог  Milk dairy products, eggs						
2005.12=100											
2005 12 <sup>1</sup>	41.08	39.52	9.92	16.51	3.55	1.61	4.12	2.27	1.56		
2006 12	41.96	40.31	10.25	16.39	3.75	1.87	4.12	2.25	1.65		
2007 12	52.26	50.55	13.87	19.75	4.47	1.87	4.75	3.66	1.72		
2008 12	65.08	62.96	18.77	21.84	6.03	2.23	7.01	4.41	2.12		
2009 12	64.76	62.34	18.85	20.14	6.37	3.04	6.96	4.18	2.42		
03	76.10	73.60	18.74	29.03	6.99	3.42	8.37	4.08	2.50		
06	86.61	84.15	18.96	40.39	6.20	3.19	8.26	3.99	2.46		
09	76.11	73.68	20.39	27.81	5.92	3.45	8.84	4.00	2.42		
2010 12	78.07	75.64	20.76	28.93	7.00	3.41	8.23	4.03	2.43		
2010.12=100											
2010 12 <sup>2</sup>	30.03	28.61	8.26	10.11	3.40	1.09	2.95	1.45	1.42		
01	31.50	30.08	8.26	11.34	3.55	1.09	3.02	1.46	1.42		
02	31.60	30.17	8.23	11.45	3.52	1.09	3.05	1.46	1.43		
03	30.72	29.28	8.24	10.58	3.48	1.09	3.06	1.45	1.44		
04	30.22	28.78	8.20	10.16	3.42	1.09	3.07	1.44	1.44		
05	31.32	29.89	8.27	11.26	3.34	1.08	3.13	1.42	1.43		
06	31.70	30.26	8.28	11.28	3.23	1.08	3.59	1.41	1.44		
07	32.26	30.82	8.29	11.62	3.16	1.08	3.86	1.42	1.44		
08	31.88	30.44	8.29	11.55	3.12	1.08	3.58	1.43	1.44		
09	31.70	30.27	8.28	11.66	3.19	1.08	3.21	1.47	1.43		
10	31.30	29.86	8.28	11.35	3.33	1.10	2.89	1.46	1.43		
11	31.46	30.01	8.26	11.29	3.49	1.10	2.95	1.47	1.45		
2011 12	32.31	30.87	8.28	11.91	3.61	1.12	3.03	1.47	1.45		
01	34.24	32.74	8.32	13.36	3.78	1.15	3.10	1.49	1.50		
02	36.53	35.03	8.34	15.43	3.82	1.16	3.20	1.53	1.50		
03	39.41	37.87	8.43	18.07	3.77	1.16	3.30	1.54	1.53		
04	39.60	38.04	8.42	18.34	3.68	1.16	3.32	1.56	1.55		
05	40.07	38.52	8.47	18.78	3.59	1.16	3.37	1.55	1.55		
06	40.19	38.63	8.51	19.01	3.33	1.17	3.57	1.48	1.56		
07	40.94	39.38	8.53	19.58	3.29	1.18	3.74	1.47	1.56		
08	40.45	38.89	8.58	18.88	3.26	1.20	3.82	1.48	1.56		
09	39.30	37.74	8.60	18.27	3.23	1.20	3.24	1.50	1.55		
10	38.10	36.53	8.69	17.03	3.38	1.20	3.00	1.51	1.57		
11	38.14	36.57	8.69	16.85	3.51	1.20	3.08	1.51	1.57		
12*	38.75	37.18	8.73	17.11	3.60	1.20	3.30	1.50	1.58		
2013 01	39.63	38.05	8.78	17.60	3.73	1.20	3.49	1.51	1.58		
02	41.39	39.81	8.96	18.97	3.75	1.21	3.64	1.51	1.59		
03	41.92	40.32	9.34	18.92	3.93	1.21	3.60	1.53	1.60		
04	42.82	41.21	9.46	19.73	3.89	1.22	3.60	1.53	1.61		
05	42.89	41.27	9.43	19.85	3.87	1.20	3.66	1.51	1.62		
06	42.56	40.95	9.45	19.78	3.62	1.20	3.63	1.52	1.61		
07	42.51	40.90	9.46	19.62	3.51	1.19	3.85	1.52	1.61		
08	41.22	39.60	9.61	18.34	3.58	1.20	3.56	1.53	1.62		
09	41.32	39.66	9.82	18.22	3.82	1.20	3.22	1.53	1.65		
10	41.24	39.40	10.26	17.56	3.99	1.23	2.89	1.60	1.84		
11	41.90	40.04	10.32	17.21	4.52	1.24	3.20	1.62	1.86		
12	42.84	40.96	10.40	17.54	4.64	1.25	3.57	1.63	1.88		
2014 01	44.45	42.65	10.42	19.03	4.74	1.25	3.63	1.63	1.80		
02	45.59	43.75	10.47	19.97	4.84	1.25	3.63	1.64	1.84		
03	46.13	44.29	10.48	20.31	4.92	1.25	3.72	1.64	1.84		
04	46.79	44.92	10.65	20.49	5.19	1.25	3.70	1.64	1.87		
05	47.90	46.05	10.86	21.29	5.31	1.27	3.72	1.65	1.85		
06	48.29	46.36	11.07	21.53	4.96	1.27	3.89	1.67	1.93		
07	47.64	45.68	12.03	19.69	4.57	1.29	4.34	1.71	1.96		
08	45.93	43.96	12.05	18.72	4.51	1.30	3.56	1.72	1.96		
09	46.00	44.04	12.13	18.50	4.70	1.33	3.52	1.76	1.96		
10	45.49	43.49	12.15	17.79	4.86	1.35	3.43	1.76	2.00		
11	45.31	43.32	12.12	17.45	5.03	1.32	3.48	1.76	2.00		
12	45.81	43.79	12.20	17.46	5.14	1.33	3.70	1.78	2.01		
2015 01	46.19	44.14	12.16	17.61	5.16	1.33	3.85	1.82	2.05		
02	46.49	44.42	12.17	18.13	4.90	1.34	3.84	1.83	2.07		
03	47.83	45.76	12.33	19.11	4.87	1.34	4.05	1.85	2.07		
04	49.20	47.12	12.34	20.56	4.72	1.34	4.08	1.85	2.08		
05	49.49	47.42	12.40	20.81	4.50	1.35	4.26	1.85	2.08		
06	49.59	47.51	12.43	20.95	4.49	1.34	4.19	1.86	2.08		
07	49.64	47.54	12.41	20.19	4.49	1.35	5.03	1.85	2.10		

Эх үүсвэр: Үндэсний Статистикийн хороо, Статистикийн бюллетень Source: Monthly Statistical Bulletin, NSC

2 2000 оны 12 сараас ХБ-ны ерөнхий индексийг тооцоходоо 205 нэр төрлийн бүтээгдэхүүнийг 239 болгож илжжүүлэн тооцов.

2 Since december 2000 the CPI calculation is based on the basket containing 239 consumer goods compared to 205 in previous years.

3 2006 оны 4 сараас эхлэн ХБУ-ны сагсан дахь бараа үйлчилгээг 287 болгон өргөжүүлж, 2005 оны 12 сарын үнийг суурь үнэ болгон авав.

3 Since April 2006 the items in consumer basket updated to 287 and prices of December 2005 was taken as the base period.

\* Улаанбаатар хотод борлуулдаг буй махны дундаж үнийг хүнсний захуудын махны борлуулалтын хэмжээгээр жингнэж тооцон 2012.12 сараас хойшхи инфляцийн задаргаа илэрчээгдсэн



Хэрэглээний барааны үнийн индекс  
Consumer price index

үргэлжлэл  
continued

Хугацааны эцэст End-of-period	Гэр ахуйн тавилга, гэр ахуйн бараа Furnishings, household equipment, tools	Эм, тариа, эмнэлгийн үйлчилгээ Medical care, services	Тээвэр Transport	Үүнгээс Of which		Холбоо, шуудан Communication	Амралт, чөлөөт цаг, соёлын үйлчилгээ Recreation, culture	Боловсрол Education	Зочид буудал, нийтийн хоол, дотуур байр Restaurants, hotels	Бусад бараа үйлчилгээ Miscellaneous goods & services
				Тээврийн засвар, үйлчилгээ Maintenance of personal transport	Тээврийн үйлчилгээ Transport services					
2005 12 <sup>1</sup>	4.30	1.62	8.71	2.47	5.76	4.05	3.33	4.15	1.72	3.00
2006 12	4.64	1.77	9.57	2.53	6.07	3.09	3.62	4.58	1.89	3.32
2007 12	5.22	2.10	10.59	3.19	6.81	2.90	3.73	5.50	2.08	3.48
2008 12	5.99	2.68	14.17	3.59	9.87	2.78	4.05	7.57	2.80	4.02
2009 12	6.37	3.06	14.06	3.82	9.57	2.98	4.14	8.25	3.14	4.66
03	6.37	3.07	14.19	3.83	9.61	3.48	4.16	8.25	3.42	4.72
06	6.45	3.11	14.28	3.79	9.75	3.48	4.12	8.25	3.48	4.74
09	6.50	3.12	14.25	3.76	9.74	3.48	4.16	9.93	3.51	4.79
2010 12	6.66	3.17	14.32	3.85	9.73	3.48	4.20	9.93	3.61	4.80
2010 12 <sup>2</sup>	3.51	3.00	12.58	4.92	3.74	4.41	3.10	6.12	3.55	3.77
01	3.52	3.00	12.58	4.92	3.74	4.41	3.10	6.12	3.55	3.78
02	3.53	3.01	12.74	5.06	3.75	4.41	3.10	6.12	3.55	3.78
03	3.53	3.01	12.74	5.06	3.76	4.42	3.10	6.12	3.55	3.78
04	3.57	3.02	12.82	5.15	3.76	4.42	3.12	6.12	3.55	3.81
05	3.59	3.03	12.80	5.11	3.76	4.43	3.13	6.12	3.56	3.87
06	3.63	3.04	13.73	5.57	4.23	4.43	3.19	6.12	3.63	3.93
07	3.63	3.04	14.02	5.57	4.51	4.42	3.20	6.12	3.63	3.93
08	3.68	3.04	14.12	5.58	4.60	4.42	3.20	6.58	3.63	3.93
09	3.69	3.05	14.12	5.58	4.60	4.42	3.20	6.58	3.65	3.93
10	3.73	3.05	14.14	5.59	4.60	4.42	3.21	6.58	3.68	3.98
11	3.73	3.05	14.18	5.62	4.61	4.42	3.21	6.58	3.68	4.00
2011 12	3.70	3.05	14.18	5.62	4.62	4.42	3.16	6.58	3.68	4.00
01	3.74	3.09	14.84	6.21	4.68	4.42	3.21	6.58	3.76	4.06
02	3.77	3.14	15.09	6.07	4.70	4.40	3.26	6.58	4.21	4.06
03	3.80	3.24	15.08	6.02	4.74	4.40	3.27	6.58	4.21	4.08
04	3.81	3.25	14.66	5.83	4.74	4.40	3.29	6.58	4.28	4.09
05	3.78	3.25	14.75	5.94	4.71	4.38	3.28	6.58	4.43	4.11
06	3.79	3.23	14.79	5.98	4.71	4.38	3.25	6.58	4.43	4.12
07	3.81	3.23	14.79	5.98	4.71	4.38	3.23	6.58	4.43	4.12
08	3.83	3.33	14.79	5.98	4.71	4.38	3.28	7.64	4.48	4.14
09	3.82	3.36	14.84	6.03	4.71	4.36	3.22	7.64	4.48	4.17
10	3.83	3.40	15.08	6.03	4.71	4.36	3.25	7.64	4.48	4.22
11	3.85	3.41	15.01	6.03	4.73	4.36	3.28	7.64	4.48	4.23
2012 12	3.87	3.41	15.25	6.17	4.73	4.36	3.28	7.64	4.48	4.25
01	3.87	3.41	15.46	6.39	4.73	4.37	3.28	7.64	4.65	4.25
02	3.87	3.41	15.49	6.39	4.76	4.36	3.28	7.64	4.65	4.25
03	3.87	3.54	15.52	6.39	4.79	4.36	3.29	7.64	4.74	4.28
2013 04	3.88	3.54	15.53	6.39	4.79	4.36	3.29	7.64	4.74	4.31
05	3.89	3.58	15.53	6.39	4.79	4.36	3.26	7.64	4.74	4.32
06	3.91	3.63	15.38	6.25	4.79	4.36	3.22	7.64	4.74	4.33
07	3.96	3.70	15.14	6.25	4.79	4.36	3.23	7.64	4.74	4.36
08	4.09	3.75	15.27	6.33	4.84	4.36	3.25	9.81	4.94	4.51
09	4.27	3.93	15.38	6.37	4.91	4.35	3.21	9.81	4.95	4.63
10	4.41	4.07	15.41	6.40	4.91	4.35	3.20	9.81	5.14	4.85
11	4.54	4.07	15.50	6.40	5.00	4.35	3.21	9.81	5.26	5.06
12	4.67	4.15	15.50	6.40	5.00	4.35	3.21	9.81	5.27	5.14
2014 01	4.68	4.15	16.08	6.42	5.55	4.35	3.22	9.81	5.27	5.21
02	4.71	4.15	16.20	6.48	5.62	4.35	3.22	9.81	5.30	5.21
03	4.72	4.15	16.24	6.52	5.62	4.35	3.22	9.81	5.30	5.21
04	4.74	4.16	16.26	6.68	5.62	4.37	3.23	9.81	5.51	5.45
05	4.76	4.23	16.41	6.68	5.62	4.37	3.23	9.81	5.51	5.45
06	4.75	4.44	16.48	6.68	5.69	4.39	3.24	9.81	5.50	5.53
07	4.83	4.51	16.97	6.68	5.71	4.39	3.25	9.81	5.50	5.54
08	4.88	4.51	16.98	6.68	5.71	4.39	3.47	11.55	5.51	5.54
09	4.94	4.51	16.98	6.68	5.71	4.39	3.50	11.55	5.51	5.55
10	4.98	4.52	16.98	6.68	5.71	4.39	3.51	11.55	5.51	5.56
11	5.04	4.59	17.07	6.77	5.71	4.39	3.51	11.55	5.54	5.58
12	5.06	4.62	17.10	6.78	5.73	4.39	3.52	11.55	5.54	5.61
2015 01	5.08	4.62	17.38	7.04	5.76	4.38	3.53	11.55	5.54	5.61
02	5.09	4.62	17.38	7.04	5.76	4.38	3.53	11.55	5.54	5.62
03	5.11	4.62	17.38	7.04	5.76	4.38	3.54	11.55	5.63	5.68
04	5.19	4.66	17.38	7.04	5.76	4.39	3.56	11.55	5.63	5.69
05	5.22	4.66	17.13	6.78	5.76	4.39	3.56	11.55	5.63	5.73
06	5.25	4.66	17.15	6.78	5.78	4.37	3.51	11.55	5.64	5.80
07	5.27	4.72	17.16	6.78	5.79	4.36	3.51	11.55	5.64	5.91

<sup>2</sup> 2000 оны 12 сараас ХБҮ-ны ерөнхий индексийг тооцоходоо 205 нэр төрлийн бүтээгдэхүүнийг 239 болгож шилжүүлэн тооцон.

<sup>3</sup> Since december 2000 the CPI calculation is based on the basket containing 239 consumer goods compared to 205 in previous years.

<sup>3</sup> 2006 оны 4 сараас эхлэн ХБҮ-ны салсан дахь бараа үйлчилгээг 287 болгон оргожүүлж, 2005 оны 12 сарын үнийг суурь үнэ болгон авав.

<sup>3</sup> Since April 2006 the items in consumer basket updated to 287 and prices of December 2005 was taken as the base period.

<sup>4</sup> Core inflation is estimated after excluding the most price volatile 29 items, such as meat, milk, dairy, and vegetables, from consumer basket.

Хэрэглээний барааны үнийн индекс  
Consumer price index

үргэлжлэл  
continued

Хугацааны эцэст End-of- period	Ерөнхий индекс  General CPI	Инфляци сарын  Inflation monthly	Инфляци оны эхнээс  Inflation from the beginning of the year	Инфляци жилийн  Inflation annual	Сарын инфляцийн шат. дундаж  Moving average of monthly inflation	Суурь инфляци			Улсын хэрэглээний үнийн индекс			
						сарын	оны эхнээс	жилийн	сарын	оны эхнээс	жилийн	
						Core inflation			National CPI			
						Monthly	Changes from the begin. of year	Annual	Monthly	Changes from the begin. of year	Annual	
2005 12 <sup>1</sup>	100.0											
2006 12	104.8	0.5	4.8	4.8	0.0	0.0						
2007 12	119.5	0.5	14.0	14.0	0.4	-0.6	12.5	12.5	1.8	17.8	17.8	
2008 12	147.3	-0.5	23.2	23.2	1.6	-0.5	23.1	23.1	0.0	22.1	22.1	
2009 12	150.0	0.2	1.9	1.9	0.2	0.2	4.1	4.1	0.7	4.2	4.2	
03	163.0	1.9	8.7	7.8	0.6	-0.3	2.2	6.0	1.9	7.4	8.5	
06	174.3	0.1	16.2	12.6	1.0	0.7	3.0	6.1	-1.5	11.4	11.4	
09	167.6	-1.4	11.7	10.9	0.9	0.4	7.3	7.2	-0.7	8.3	10.6	
2010 12	171.5	2.4	14.3	14.3	1.1	0.3	9.4	9.4	2.4	13.0	13.0	
2010 12 <sup>2</sup>	100.0											
01	101.5	1.5	1.5	13.0	1.1	0.1	0.1	8.9	1.5	1.5	8.6	
02	101.8	0.3	1.8	9.2	0.8	0.3	0.3	7.9	0.5	2.0	8.7	
03	100.9	-0.9	0.9	6.1	0.5	-0.1	0.3	8.3	-0.4	1.6	9.1	
04	100.7	-0.2	0.7	3.3	0.3	0.3	0.6	8.9	-0.1	1.6	9.3	
05	102.8	2.0	2.8	1.2	0.1	1.2	1.8	9.8	1.5	3.1	8.9	
06	104.4	1.6	4.4	2.7	0.2	1.4	3.3	10.7	1.1	4.3	9.7	
07	105.2	0.8	5.2	7.8	0.6	0.4	3.7	10.7	0.7	5.0	9.6	
08	106.1	0.8	6.1	7.0	0.6	1.4	5.1	8.1	0.3	5.3	10.3	
09	107.8	1.6	7.8	10.3	0.8	2.2	7.4	10.1	1.1	6.5	10.8	
10	108.1	0.3	8.1	11.8	0.9	0.9	8.4	10.1	0.4	6.9	10.5	
11	108.6	0.5	8.6	11.3	0.9	0.4	8.8	9.8	0.7	7.7	9.8	
2011 12	109.4	0.7	9.4	9.4	0.8	-0.1	8.7	8.7	1.1	8.9	8.9	
01	112.6	2.9	2.9	10.9	0.9	1.7	1.7	10.5	2.8	2.8	10.2	
02	115.5	2.6	5.6	13.4	1.1	0.7	2.4	11.0	2.5	5.4	12.4	
03	118.3	2.5	8.2	17.3	1.3	0.2	2.6	11.3	2.2	7.6	15.3	
04	118.6	0.2	8.4	17.8	1.4	0.1	2.7	10.9	0.5	8.2	16.0	
05	119.8	1.0	9.5	16.6	1.3	0.8	3.5	10.6	1.0	9.2	15.4	
06	120.1	0.3	9.8	15.1	1.2	0.2	3.7	9.2	0.5	9.7	14.7	
07	120.9	0.7	10.6	14.9	1.2	0.1	3.8	8.9	0.6	10.4	14.5	
08	122.6	1.4	12.1	15.6	1.2	2.5	6.4	10.1	0.7	11.1	14.9	
09	124.0	1.2	13.4	15.1	1.2	2.8	9.3	10.7	1.0	12.2	14.8	
10	124.3	0.2	13.7	15.0	1.2	1.6	11.1	11.4	0.6	12.9	15.0	
11	124.1	-0.2	13.4	14.2	1.1	-0.3	10.8	10.7	0.2	13.1	14.4	
2012 12	124.9	0.7	14.2	14.2	1.1	0.3	11.1	11.1	0.8	14.0	14.0	
01	126.0	0.8	0.8	11.9	0.9	0.2	0.2	9.6	1.4	1.4	12.6	
02	127.5	1.2	2.0	10.4	0.8	0.0	0.2	8.7	1.0	2.8	11.3	
03	128.2	0.6	2.6	8.3	0.7	0.6	0.8	9.2	0.8	3.6	9.8	
2013 04	129.1	0.7	3.4	8.9	0.7	0.2	1.0	9.3	1.1	4.8	10.4	
05	128.6	-0.4	2.9	7.4	0.6	-0.7	0.3	7.6	0.3	5.1	9.7	
06	128.0	-0.5	2.4	6.5	0.5	-0.3	0.0	7.1	-0.3	4.7	8.8	
07	128.3	0.2	2.7	6.1	0.5	0.4	0.4	7.4	0.1	4.9	8.3	
08	131.4	2.4	5.1	7.1	0.6	4.5	4.9	9.6	1.7	6.7	9.4	
09	132.7	1.0	6.2	6.9	0.6	1.4	6.4	8.1	1.4	8.2	9.9	
10	134.8	1.6	7.9	8.5	0.7	2.8	9.4	9.4	1.4	9.7	10.8	
11	136.6	1.3	9.4	10.1	0.8	1.2	10.7	11.0	1.3	11.1	12.0	
12	138.9	1.7	11.2	11.2	0.9	1.3	12.1	12.1	0.7	11.9	11.9	
2014 01	141.3	1.7	1.7	12.2	1.0	0.7	0.7	12.6	1.7	1.7	12.3	
02	142.8	1.0	2.8	12.0	1.0	0.3	1.0	13.1	0.9	2.7	12.2	
03	143.5	0.5	3.3	11.9	0.9	0.2	1.2	12.6	0.8	3.5	12.4	
04	146.5	1.3	5.5	13.9	1.1	0.8	2.7	14.8	1.5	6.2	13.7	
05	146.5	1.3	5.5	13.9	1.1	0.8	2.7	14.8	1.5	6.2	13.7	
06	147.3	0.5	6.0	15.1	1.2	0.6	3.3	15.8	0.5	6.7	14.6	
07	148.1	0.6	6.6	15.4	1.2	2.2	5.6	17.9	0.4	7.2	14.9	
08	149.2	0.7	7.4	13.6	1.1	2.4	8.1	15.6	0.4	7.7	13.7	
09	150.7	1.0	8.5	13.6	1.1	1.3	9.6	15.5	0.7	8.5	13.0	
10	152.0	0.8	9.4	12.7	1.0	1.5	11.3	14.1	0.8	9.3	12.1	
11	152.9	0.6	10.1	11.9	0.9	0.8	12.2	13.6	0.7	10.1	11.5	
12	153.8	0.6	10.7	10.7	0.9	0.4	12.6	12.6	0.8	11.0	11.0	
2015 01	154.5	0.5	0.5	9.3	0.7	0.4	0.4	12.3	0.7	0.7	9.8	
02	154.9	0.2	0.7	8.5	0.7	0.1	0.1	12.0	0.4	1.1	9.3	
03	156.1	0.8	1.5	8.8	0.7	0.1	0.5	11.9	0.8	1.9	9.3	
04	157.4	0.8	2.4	8.8	0.7	-0.1	0.4	11.0	0.9	2.9	9.2	
05	157.6	0.1	2.5	7.5	0.6	0.0	0.4	10.2	0.4	3.3	8.0	
06	157.8	0.1	2.6	7.1	0.6	0.1	0.5	9.6	-0.1	3.2	7.3	
07	157.9	0.1	2.7	6.6	0.5	0.1	0.6	7.3	0.0	3.3	6.9	



**Хэрэглээний үнийн улсын индекс**  
**National consumer price index**

хувиар  
in percent

Хугацааны эцэст	Хүнсний бараа, согтууруулах бус ундаа	Согтууруулах ундаа, тамхи	Хувцас, бөс бараа, гутал	Орон сууц, ус, түлш, цахилгаан	Гэр ахуйн тавилга, гэр ахуйн бараа	Эм, тариа, эмнэлгийн үйлчилгээ	Тээвэр	Холбооны хэрэгсэл, шуудангийн үйлчилгээ
<i>End-of-period</i>	<i>Food &amp; non-alcoholic beverages</i>	<i>Alcoholic beverages, tobacco</i>	<i>Clothing, footwear and cloths</i>	<i>Housing, water, electricity, and fuels</i>	<i>Furnishings, household equipment &amp; tools</i>	<i>Medical care &amp; services</i>	<i>Transports</i>	<i>Communi-cation</i>
								2010.12=100
2013 01	38.59	5.02	21.16	15.28	5.55	4.01	14.92	4.36
02	39.80	5.04	21.25	15.14	5.58	4.02	14.96	4.36
03	40.33	5.05	21.37	15.07	5.64	4.10	15.00	4.36
04	41.49	5.07	21.51	15.12	5.66	4.11	15.00	4.36
05	41.89	5.09	21.68	14.70	5.69	4.16	15.02	4.36
06	41.45	5.12	21.79	14.60	5.73	4.19	14.89	4.36
07	41.29	5.13	21.90	14.87	5.79	4.24	14.77	4.36
08	40.06	5.17	22.38	15.48	5.89	4.25	14.91	4.35
09	40.11	5.42	22.93	15.76	6.11	4.37	15.01	4.35
10	40.25	5.52	23.67	16.36	6.25	4.43	15.05	4.35
11	40.85	5.56	24.22	16.47	6.38	4.46	15.10	4.35
12	41.64	5.68	24.74	16.57	6.48	4.51	15.10	4.35
2014 01	43.08	5.72	24.99	16.70	6.55	4.54	15.48	4.35
02	43.86	5.75	25.20	16.74	6.59	4.56	15.56	4.35
03	44.59	5.76	25.50	16.74	6.63	4.56	15.61	4.35
04	45.54	5.87	25.67	16.70	6.69	4.57	15.66	4.35
05	46.79	5.95	26.07	16.64	6.77	4.63	15.80	4.35
06	47.13	5.96	26.34	16.44	6.82	4.76	15.89	4.36
07	46.69	6.01	26.46	16.85	6.90	4.80	16.21	4.35
08	45.02	6.03	26.88	17.11	6.98	4.81	16.24	4.35
09	44.81	6.08	27.21	17.83	7.08	4.83	16.29	4.35
10	44.55	6.12	27.48	18.78	7.14	4.84	16.33	4.35
11	44.66	6.15	27.85	19.17	7.20	4.89	16.38	4.35
12	45.13	6.26	28.27	19.28	7.22	4.92	16.40	4.35
2015 01	45.51	6.28	28.48	19.40	7.26	4.95	16.58	4.34
02	45.94	6.29	28.61	19.45	7.29	4.96	16.58	4.35
03	47.10	6.31	28.77	19.23	7.33	4.97	16.59	4.34
04	48.37	6.32	28.99	19.04	7.40	4.99	16.63	4.35
05	48.77	6.34	29.12	18.97	7.44	5.02	16.59	4.35
06	48.55	6.36	29.20	18.92	7.47	5.01	16.61	4.33
07	48.51	6.36	29.21	18.87	7.49	5.04	16.62	4.32

Эх үүсвэр: Үндэсний Статистикийн хороо, Статистикийн бюллетень

Source: Monthly Statistical Bulletin, NSC

**Хэрэглээний үнийн улсын индекс /үргэлжлэл/  
National consumer price index /continued/**

хувиар  
in percent

Хугацааны эцэст	Амралт, чөлөөт цаг, соёлын бараа үйлчилгээ	Боловсролын үйлчилгээ	Зочид буудал, нийтийн хоол, дотуур байр	Бусад бараа үйлчилгээ	Ерөнхий индекс	Сарын өөрчлөлт %	Оны эхнээс %	Жилийн өөрчлөлт
<i>End-of-period</i>	<i>Recreation &amp; culture</i>	<i>Education</i>	<i>Restaurants hotels</i>	<i>Miscellaneous goods &amp; services</i>	<i>General CPI</i>	<i>Monthly changes</i>	<i>Changes from the beginning of the year</i>	<i>Annual changes</i>
2013 01	2.96	5.99	3.48	4.62	126.0	1.4	1.4	12.6
02	2.96	5.99	3.49	4.63	127.2	1.0	2.4	10.9
03	2.96	5.99	3.56	4.67	128.1	0.7	3.1	9.3
04	2.97	5.99	3.59	4.70	129.6	1.2	4.3	9.9
05	2.95	5.99	3.61	4.71	129.9	0.2	4.5	9.2
06	2.93	5.99	3.64	4.72	129.4	-0.3	4.2	8.3
07	2.94	5.99	3.65	4.75	129.7	0.2	4.4	7.8
08	2.95	7.62	3.76	4.86	131.7	1.6	6.0	8.8
09	2.94	7.62	3.77	5.02	133.4	1.3	7.4	9.1
10	2.95	7.62	3.88	5.17	135.5	1.6	9.1	10.2
11	2.96	7.62	3.96	5.34	137.3	1.3	10.5	11.4
12	2.96	7.62	3.96	5.40	139.0	1.3	11.9	11.9
2014 01	2.97	7.62	3.97	5.47	141.4	1.7	1.7	12.3
02	2.98	7.62	3.99	5.53	142.7	0.9	2.7	12.2
03	3.00	7.62	4.04	5.55	143.9	0.8	3.5	12.4
04	2.99	7.62	4.11	5.67	145.4	1.0	4.6	12.3
05	3.01	7.62	4.22	5.75	147.6	1.5	6.2	13.7
06	3.02	7.62	4.22	5.82	148.4	0.5	6.7	14.6
07	3.03	7.62	4.25	5.87	149.0	0.4	7.2	14.9
08	3.15	8.90	4.26	5.93	149.7	0.4	7.7	13.7
09	3.17	8.90	4.27	5.97	150.8	0.7	8.5	13.0
10	3.19	8.90	4.27	5.99	151.9	0.8	9.3	12.1
11	3.20	8.90	4.29	6.01	153.0	0.7	10.1	11.5
12	3.20	8.90	4.30	6.04	154.3	0.8	11.0	11.0
2015 01	3.22	8.90	4.31	6.06	155.3	0.7	0.7	9.8
02	3.22	8.90	4.32	6.08	156.0	0.4	1.1	9.3
03	3.23	8.90	4.37	6.12	157.3	0.8	1.9	9.3
04	3.27	8.90	4.37	6.15	158.8	0.9	2.9	9.2
05	3.28	8.90	4.42	6.20	159.4	0.4	3.3	8.0
06	3.25	8.90	4.44	6.24	159.3	-0.1	3.2	7.3
07	3.26	8.90	4.45	6.30	159.3	0.0	3.3	6.9

Эх үүсвэр: Үндэсний Статистикийн хороо, Статистикийн бюллетень

Source: Monthly Statistical Bulletin, NSC



**Аж ахуйн нэгж, иргэдэд олгосон зээлийн үлдэгдэл**  
**Loans outstanding**

сая төгрөг  
in millions of togrogs

Хугацааны эцэст End-of-period	Хугацаа хэтэрсэн							
	Хугацаа хэтэрсэн Татан буугдсан банкуудыг хассанаар  Principal in arrears Excl. Banks in liquidation	Татан буугдсан банкуудыг хассанаар  Principal in arrears Excl. Banks in liquidation	Үүнээс: Салбарын ангиллаар		Of which: By sectors		Бусад  Other	Бусад санхүүгийн байгууллага  Other financial corporations
			Улсын байгууллага  Public sector	Хувийн байгууллага  Private sector	Иргэд  Individuals	Иргэд Татан буугдсан банкуудыг хассанаар  Individuals Excl. Banks in liquidation		
2000 12	1 281.8							
2001 12	1 798.3							
2002 12	4 819.4							
2003 12	15 549.7							
2004 12	21 617.1		209.3	16 685.0	4 709.3		13.6	
2005 12	20 929.6		45.8	15 124.4	3 899.4		1 859.9	
2006 12	33 320.4		369.9	22 252.8	8 674.6		2 020.4	2.7
2007 12	40 320.0		872.1	32 283.1	7 134.9		0.0	30.0
2008 12	93 323.1		1 046.3	74 988.0	17 278.1		0.0	10.8
2009 12	121 739.5		1 674.9	96 447.6	23 531.9		74.1	10.9
2010 12	90 557.1		0.0	76 197.3	9 212.4		5 147.3	0.0
01	102 970.3		0.0	88 733.6	9 141.4		5 041.3	54.0
02	112 551.5		0.0	94 909.6	12 580.2		5 041.3	20.4
03	80 518.5		0.0	62 926.6	13 729.6		3 850.8	11.5
04	82 175.9		0.0	63 179.7	15 594.5		3 390.9	10.8
05	75 774.0		0.0	59 718.3	12 687.1		3 317.8	50.8
06	69 878.3		0.0	58 248.2	11 513.5		59.9	56.7
07	71 349.3		0.0	57 922.4	13 345.2		0.0	81.7
08	67 014.4		0.0	54 273.3	12 699.0		0.0	42.1
09	60 477.6		0.0	49 564.1	10 891.4		0.0	22.1
10	70 990.7		0.0	57 363.4	13 624.9		0.0	2.3
11	71 500.7		0.0	58 358.8	13 139.6		0.0	2.3
2011 12	73 736.9		0.0	42 061.7	31 662.7		0.0	12.6
01	73 822.9		0.0	35 550.7	38 269.9		0.0	2.4
02	61 172.1		0.0	29 988.3	31 162.1		0.0	21.8
03	61 438.1		0.0	30 153.9	31 284.2		0.0	0.0
04	71 159.1		7 458.0	32 023.3	31 677.8		0.0	0.0
05	60 055.9		0.0	30 603.6	29 402.4		0.0	50.0
06	51 777.5		1 765.3	31 748.2	18 251.3		0.0	12.7
07	85 133.2		0.0	63 516.6	21 576.6		0.0	40.0
08	100 632.1		0.0	76 887.0	22 724.1		1 001.0	20.0
09	117 001.2		0.0	90 758.3	25 242.2		1 000.7	0.0
10	132 473.5		0.0	103 597.0	27 867.9		1 008.5	0.0
11	147 657.5		0.0	120 898.1	25 217.7		1 541.7	0.0
12	110 915.1		0.0	83 907.5	26 675.8		331.7	0.0
2013 01	105 793.7		0.0	77 928.5	27 850.2		0.0	15.0
02	110 870.7		0.0	79 206.9	31 663.8		0.0	0.0
03	99 915.7		0.0	68 542.1	31 373.6		0.0	0.0
04	110 936.6		0.0	78 117.1	32 819.5		0.0	0.0
05	146 428.0		0.0	114 768.2	31 659.8		0.0	0.0
06	149 782.7		0.0	115 274.5	34 508.3		0.0	0.0
07	161 319.6	161 304.6	0.0	123 918.8	37 385.8	37 385.8	15.0	0.0
08	186 415.5	186 415.5	0.0	145 773.2	40 619.7	40 619.7	22.6	0.0
09	153 448.3	153 370.1	0.0	111 691.1	41 736.6	41 658.4	20.6	0.0
10	169 420.9	169 363.5	0.0	123 037.1	45 700.6	45 643.2	683.2	0.0
11	161 107.9	161 051.2	0.0	111 812.0	48 913.0	48 856.3	374.5	8.5
12	118 364.9	116 806.7	13.9	73 382.6	44 968.4	43 435.3	0.0	0.0
2014 01	152 280.7	150 795.4	13.9	95 845.9	56 420.9	54 960.7	0.0	0.0
02	198 955.9	197 536.3	13.9	139 293.3	59 648.6	58 254.2	0.0	0.0
03	279 596.3	278 247.4	0.0	219 638.5	59 957.8	58 955.0	0.0	0.0
04	299 020.4	297 733.1	41.0	237 629.0	61 350.4	60 063.1	0.0	0.0
05	381 216.6	380 152.7	550.9	316 281.8	64 346.9	63 283.1	36.9	0.0
06	438 255.0	437 274.7	35.7	371 775.3	66 444.0	65 463.7	0.0	0.0
07	550 115.6	549 160.4	3 779.1	446 818.2	99 518.4	98 563.2	0.0	0.0
08	527 090.5	526 150.6	1 954.3	433 814.6	91 302.4	90 362.5	19.2	0.0
09	464 584.0	463 743.5	1 768.8	372 819.0	89 979.0	89 138.5	17.2	0.0
10	450 570.7	449 748.3	1 596.9	330 977.6	117 993.1	117 170.8	3.0	0.0
11	444 661.1	443 861.1	2 458.4	320 018.6	122 173.5	121 373.6	10.5	0.0
12	269 488.7	268 707.0	1.3	196 614.9	70 863.5	70 081.7	2 009.1	0.0
2015 01	317 720.3	316 964.8	2.7	199 686.6	116 011.0	115 255.5	2 020.0	0.0
02	398 087.5	397 339.9	1 910.9	254 870.8	141 295.8	140 548.3	10.0	0.0
03	559 638.8	558 934.8	320.5	449 370.7	109 937.8	109 233.9	9.8	0.0
04	587 771.6	587 076.5	250.7	472 545.7	114 413.2	113 718.2	6.4	555.5
05	600 632.3	600 241.9	157.3	482 596.3	117 733.2	117 342.8	140.9	4.6
06	603 880.2	603 570.6	85.7	491 632.7	110 267.3	109 957.8	1 894.4	0.0
07	716 610.2	716 303.7	11 091.2	577 030.8	126 648.6	126 342.2	1 839.6	0.0

1 Үүний сард хадгаламж зээлийн хөршөөс үзүүлэлтийг нэвтгэж тооцов  
1 Data of Savings and Credit Cooperatives was included in Broad Money

**Аж ахуйн нэгж, иргэдэд олгосон зээлийн үлдэгдэл**  
**Loans outstanding**

сая төгрөг

in millions of togrogs

Хугацааны эцэст End-of-period	Хугацааны эцэст									
	Чанаргүй зээл  Non-performing loans	Чанаргүй зээл Татан буугдсан банкуудыг хассанаар  Non-performing loans Excl. Banks in liquidation	Үүнгээс: Салбарын ангиллаар			Of which: By sectors				
			Улсын байгууллага  Public sector	Хувийн байгууллага  Private sector	Хувийн байгууллага Татан буугдсан банкуудыг хассанаар  Private sector Excl. Banks in liquidation	Иргэд  Individuals	Иргэд Татан буугдсан банкуудыг хассанаар  Individuals Excl. Banks in liquidation	Бусад  Other	Бусад санхүүгийн байгууллага  Other financial corporations	
2000 12	14 613.8									
2001 12	9 067.6									
2002 12	11 744.9									
2003 12	21 150.3									
2004 12	39 118.0			356.4	28 295.0		10 201.5		264.6	0.5
2005 12	49 471.0			11.1	36 301.1		12 890.3		268.1	0.5
2006 12	60 021.6			106.1	42 320.0		15 682.7		1 912.2	0.6
2007 12	68 071.3			520.7	44 311.1		21 021.2		1 915.4	302.9
2008 12	188 667.2			123.4	146 961.2		41 378.4		150.8	53.4
2009 12	462 001.5			160.2	389 811.0		80 870.0		125.7	34.6
2010 12	374 357.6			0.0	307 283.3		67 007.7		36.5	30.0
01	361 482.7			0.0	295 562.5		65 745.5		142.2	32.4
02	360 416.6			0.0	295 891.4		64 352.9		142.4	30.0
03	372 082.8			0.0	309 074.9		62 110.5		856.1	41.2
04	381 467.2			0.0	319 602.8		60 977.0		855.0	32.4
05	397 633.8			27.8	339 868.3		56 847.2		851.7	38.9
06	390 537.4			27.8	333 211.2		53 408.6		3 849.9	39.8
07	381 906.6			27.8	325 855.9		52 530.5		3 442.7	49.7
08	375 931.5			27.8	321 055.0		51 440.5		3 335.1	73.2
09	357 253.6			25.9	293 861.7		59 945.3		3 335.0	85.7
10	347 524.4			23.9	290 674.7		53 566.4		3 162.4	97.1
11	343 158.4			23.9	284 633.8		55 567.3		2 849.2	84.2
2011 12	329 961.1			0.0	277 384.7		51 522.6		985.3	68.5
01	326 638.5			0.0	274 230.0		51 359.8		984.7	64.1
02	323 316.7			0.0	269 260.6		52 958.9		1 035.4	61.8
03	320 162.6			0.0	271 811.2		47 453.7		838.9	58.8
04	316 610.6			0.0	268 133.2		47 585.9		838.9	52.6
05	315 653.0			7 426.1	258 529.5		48 239.5		1 416.4	41.4
06	307 836.0			7 579.8	248 570.2		50 815.2		839.4	31.4
07	305 748.3			7 542.8	245 802.8		51 086.1		884.9	431.7
08	312 304.3			5 770.9	253 368.2		52 243.3		880.3	41.6
09	306 292.5			5 826.8	254 060.3		45 492.8		872.6	40.0
10	306 169.1			5 807.0	254 474.6		44 973.7		872.7	41.1
11	298 451.2			5 805.5	246 631.7		45 141.6		832.7	39.8
12	294 498.8			6 565.5	241 961.4		43 592.8		2 332.6	46.6
2013 01	307 187.5			6 425.9	254 784.0		43 610.4		2 322.6	44.7
02	305 940.3			655.7	256 461.6		46 496.8		2 283.8	42.4
03	308 839.5			547.7	257 007.9		48 397.7		2 845.9	40.2
04	310 733.4			539.2	258 442.2		48 873.1		2 841.0	38.0
05	318 007.1			529.2	265 830.8		48 774.2		2 811.2	61.6
06	316 822.2			524.2	263 919.1		49 533.9		2 811.3	33.6
07	452 949.5	189 478.9		512.4	400 014.4	147 115.1	49 578.5	39 007.2	2 812.6	31.6
08	464 836.4	199 554.2		508.4	411 064.5	155 617.9	50 418.8	40 583.2	2 815.2	29.5
09	537 163.6	228 404.1		500.4	482 078.2	183 155.9	51 734.9	41 897.6	2 822.8	27.3
10	560 512.9	248 437.1		500.4	501 111.0	198 966.5	58 289.8	48 358.6	586.5	25.2
11	572 487.4	260 954.5		500.4	510 506.3	208 806.3	60 870.9	51 037.9	586.8	23.0
12	565 805.8	259 612.0		500.4	507 074.5	210 914.1	57 625.4	47 592.1	584.7	20.8
2014 01	581 789.3	274 419.9		500.4	521 158.8	223 812.7	59 525.4	49 502.1	586.1	18.6
02	597 884.1	288 030.3		430.5	536 234.7	236 373.6	60 655.8	50 663.2	546.6	16.4
03	594 460.8	285 132.6		444.4	535 578.1	235 938.1	57 877.7	48 189.4	546.4	14.2
04	616 156.3	306 544.8		444.4	553 803.2	253 997.2	61 849.0	52 043.5	47.7	12.0
05	619 769.4	315 692.8		444.4	560 219.3	265 810.3	59 047.7	49 380.1	48.2	9.8
06	566 963.3	327 730.4		444.4	515 327.9	278 868.5	51 135.0	48 361.6	48.4	7.6
07	599 706.7	359 351.5		476.6	545 048.6	307 453.7	54 126.7	51 366.4	49.4	5.4
08	620 002.5	382 580.8		476.6	559 732.6	325 024.5	59 745.3	57 031.7	48.0	0.0
09	590 439.5	351 942.0		476.6	524 740.1	288 949.4	65 174.1	62 467.4	48.7	0.0
10	606 300.7	367 018.2		475.6	536 755.1	300 165.6	69 020.9	66 327.7	49.2	0.0
11	620 026.9	379 420.4		475.6	541 740.1	303 820.6	77 761.2	75 074.2	50.0	0.0
12	625 699.2	385 538.9		475.6	554 278.9	316 808.1	70 883.3	68 193.7	61.4	0.0
2015 01	657 414.6	415 441.8		475.6	577 322.9	338 006.9	79 553.0	76 896.1	63.1	0.0
02	667 017.8	424 430.2		475.6	581 184.0	341 206.2	83 294.4	80 684.6	2 063.8	0.0
03	702 956.7	464 378.2		475.6	614 272.9	378 330.3	86 144.2	83 508.3	2 064.0	0.0
04	747 042.7	509 410.6		475.6	647 311.8	412 193.2	97 201.3	94 687.8	2 054.0	0.0
05	738 997.9	503 550.6		640.6	634 329.5	401 653.8	103 538.7	100 763.3	52.7	436.4
06	773 905.3	536 727.9		636.7	665 220.8	431 016.3	107 989.6	105 012.8	53.5	4.7
07	824 905.3	586 548.7		474.5	704 361.2	468 717.2	119 956.4	117 243.8	108.9	4.3

Тухайн сард хадгалж зээлийн хорионоос үзүүлтийг нэвтэж тооцон  
 Data of Savings and Credit Cooperatives was included in Broad Money

**Харилцах, хадгаламжийн хүү**  
**Deposit rate**

жсгийн хүү, хувиар  
in percent, annual

Хугацааны эгсгэт	Харилцах, хадгаламжийн хүү								
	Харилцах данс, Current account				Хугацаагүй хадгаламж	Хадгаламж, Deposit			Жигтсэн дундаж хүү Weighted average rate
	Зарласан хүү - дээд доош Offered rate, highest lowest		Жигтсэн дундаж хүү Weighted average rate			Хугацаатай хадгаламж Time deposit			
	Төгрөгийн DC	Валютын FC	Төгрөгийн DC	Валютын FC		Төгрөгийн DC	Валютын FC		
				Demand deposit	0-1 жил 0-1 year	0-1 жил 0-1 year	Төгрөгийн DC	Валютын FC	
2000 12	2.4-6.0	1.0-3.6			1.2-13.2	3.6-24.0	1.2-12.0		
2001 12	0.0-5.1	0.3-4.2			1.2-9.60	2.4-24.0	1.0-13.2		
2002 12	0.0-6.0	0.3-3.0			2.4-10.2	6.0-22.0	1.2-12.0		
2003 12	0.0-6.0	0.3-3.0			1.8-10.0	6.0-22.0	2.4-12.0		
2004 12	0.0-4.8	0.3-3.0			6.0-9.60	6.0-20.4	1.4-9.60		
2005 12	0.0-4.8	0.0-7.2			6.0-9.96	6.0-19.2	1.4-10.8		
2006 12	0.0-5.0	0.0-4.0			6.0-10.2	7.56-19.4	1.4-11.4		
2007 12	0.0-4.8	0.0-3.6			6.0-10.3	7.56-19.3	1.2-11.4		
2008 12	0.0-7.2	0.0-3.6	2.4	1.1	4.8-12.0	2.4-19.4	1.2-14.04	13.6	7.4
2009 12	0.0-7.2	0.0-7.2	2.6	1.8	3.6-12.0	2.4-19.2	1.2-14.04	12.9	6.4
2010 12	0.0-8.4	0.0-3.0	3.2	1.6	0.0-8.4	6.0-18.0	0.6-14.04	10.7	4.0
01	0.0-7.2	0.0-3.0	3.2	1.3	0.0-8.4	6.0-18.0	0.6-14.04	10.7	4.3
02	0.0-7.2	0.0-3.0	3.1	1.3	0.0-8.4	6.0-18.5	0.6-14.04	10.6	4.9
03	0.0-7.2	0.0-3.0	3.1	1.3	0.0-8.4	6.0-18.5	0.6-14.04	10.5	5.0
04	0.0-7.2	0.0-3.0	2.9	1.4	0.0-8.4	6.0-18.0	0.6-14.04	10.7	4.8
05	0.0-7.2	0.0-3.0	3.0	1.3	0.0-8.4	6.0-18.0	0.6-14.04	10.4	5.0
06	0.0-7.2	0.0-7.2	3.0	1.3	0.0-8.4	6.0-18.0	0.6-14.04	10.3	4.2
07	0.0-7.2	0.0-7.2	2.9	1.3	0.0-8.4	6.0-18.0	0.6-14.04	10.4	4.9
08	0.0-7.2	0.0-7.2	3.0	1.2	0.0-8.4	6.0-18.0	0.6-14.04	10.3	4.7
09	0.0-7.2	0.0-7.2	2.8	1.1	0.0-8.4	6.0-18.0	0.6-14.04	10.2	4.7
10	0.0-7.2	0.0-7.2	3.0	1.2	0.0-8.4	6.0-18.0	0.6-14.04	10.4	4.7
11	0.0-7.2	0.0-7.2	2.9	1.3	0.0-8.4	3.0-18.0	0.6-14.04	10.5	4.7
2011 12	0.0-7.2	0.0-7.2	2.8	1.1	0.0-8.4	3.0-18.0	1.0-10.2	10.5	4.5
01	0.0-7.2	0.0-7.2	2.9	1.5	0.0-8.4	3.0-18.0	1.0-15.2	10.8	4.6
02	0.0-7.8	0.0-7.2	3.0	1.3	0.0-8.4	3.0-18.0	1.0-15.2	10.8	4.7
03	0.0-7.8	0.0-7.2	2.8	1.4	0.0-8.4	4.0-18.0	1.0-15.2	10.8	4.9
04	0.0-7.8	0.0-7.2	2.8	1.4	0.0-8.4	4.0-18.0	1.0-15.2	11.0	5.6
05	0.0-7.8	0.0-7.2	2.7	1.4	0.0-8.4	3.0-18.0	1.0-15.2	11.2	6.1
06	0.0-7.8	0.0-18.0	2.5	1.4	0.0-8.4	3.0-18.0	1.0-15.2	11.0	5.9
07	0.0-7.8	0.0-18.0	2.6	1.4	0.0-8.4	3.0-18.0	1.0-15.2	11.2	5.9
08	0.0-15.6	0.0-18.0	2.6	1.5	0.0-8.4	3.0-18.0	1.0-15.2	11.4	6.0
09	0.0-15.0	0.0-18.0	2.8	1.5	0.0-8.4	3.0-18.0	1.0-15.2	11.5	5.5
10	0.0-8.0	0.0-14.4	2.9	1.5	0.0-8.4	6.0-18.0	0.6-15.2	11.8	5.6
11	0.0-7.2	0.0-4.8	2.9	1.5	0.0-8.4	6.0-18.0	0.6-15.2	12.0	5.6
2012 12	0.0-7.2	0.0-7.2	2.7	1.3	1.8-8.4	6.0-18.0	0.6-15.2	11.7	6.1
01	0.0-7.2	0.0-7.2	2.9	1.4	0.1-8.4	3.0-18.0	1.2-15.0	11.7	6.2
02	0.0-7.2	0.0-7.20	2.9	1.4	0.1-8.4	3.0-18.0	1.0-10.2	11.5	6.6
03	0.0-7.2	0.0-7.2	3.0	1.5	0.0-8.0	3.0-18.0	1.0-10.2	12.3	7.0
2013 04	0.0-7.2	0.0-7.2	3.0	1.4	0.0-8.0	3.0-18.0	1.0-15.2	12.1	6.0
05	0.0-7.2	0.0-7.2	2.8	1.5	0.1-9.5	3.0-18.0	1.0-15.2	12.2	5.4
06	0.0-7.2	0.0-7.2	2.8	1.5	0.0-9.5	3.0-18.0	0.0-15.2	12.1	5.6
07	0.0-7.2	0.0-7.2	2.8	1.4	0.1-9.5	3.0-18.0	0.0-10.2	11.8	5.5
08	0.0-7.2	0.0-7.2	2.7	1.4	0.0-9.5	3.0-18.0	0.0-10.2	12.2	5.5
09	0.0-7.2	0.0-7.2	2.7	1.5	0.0-9.5	3.0-18.0	0.0-10.2	12.1	5.4
10	0.0-7.2	0.0-7.2	2.6	1.5	0.0-9.6	3.0-18.1	0.0-10.3	12.2	5.3
11	0.0-7.3	0.0-7.3	2.8	1.5	0.0-9.5	3.0-18.1	0.0-10.2	12.3	5.4
12	0.0-7.2	0.0-7.2	2.6	1.5	0.0-9.5	3.0-18.0	0.0-10.2	12.1	5.4
2014 01	0.0-7.2	0.0-7.2	3.0	1.6	0.0-9.5	3.0-18.0	0.0-10.2	12.2	5.5
02	0.0-7.2	0.0-7.2	2.9	1.8	0.0-9.5	3.0-18.0	0.0-10.2	12.2	5.4
03	0.0-7.2	0.0-7.2	2.8	1.7	0.0-9.5	3.0-18.0	0.0-10.2	12.2	5.6
04	0.0-7.2	0.0-7.2	2.7	1.7	0.0-9.5	3.0-18.0	0.0-10.2	12.2	5.3
05	0.0-7.2	0.0-7.2	2.7	1.7	0.0-9.5	3.0-18.0	0.0-10.2	12.2	5.6
06	0.0-7.2	0.0-7.2	2.5	1.6	0.0-9.5	3.0-18.0	0.0-10.2	12.2	5.6
07	0.0-7.2	0.0-7.2	2.6	1.7	0.0-9.5	3.0-18.0	0.0-10.2	12.2	5.4
08	0.0-7.2	0.0-7.2	2.7	1.7	0.0-9.5	3.0-18.0	0.0-10.2	12.2	5.5
09	0.0-7.2	0.0-7.2	2.6	1.7	0.0-9.5	3.0-18.0	0.0-10.2	12.3	5.5
10	0.0-7.2	0.0-7.2	2.7	1.7	0.0-9.5	3.0-18.0	0.0-10.2	12.6	5.6
11	0.0-7.2	0.0-7.2	2.8	1.7	0.0-9.5	3.0-18.0	0.0-10.2	12.7	5.7
12	0.0-7.2	0.0-7.2	2.8	1.5	0.0-8.0	3.0-18.0	0.0-10.2	12.5	5.8
2015 01	0.0-7.2	0.0-7.2	3.0	1.6	0.0-8.0	3.0-18.2	0.0-10.2	12.7	5.9
02	0.0-7.2	0.0-7.2	3.1	1.6	0.0-8.0	2.3-18.2	0.0-10.2	12.8	6.0
03	0.0-7.2	0.0-7.2	3.0	1.5	0.0-8.0	2.3-18.2	0.0-10.2	12.9	6.0
04	0.0-7.2	0.0-7.2	3.0	1.5	0.0-8.0	2.3-18.2	0.0-10.2	12.9	6.0
05	0.0-7.2	0.0-7.2	3.0	1.5	0.0-8.0	2.3-18.2	0.0-10.2	12.8	6.2
06	0.0-7.2	0.0-7.2	2.9	1.4	0.0-8.0	2.3-18.2	0.0-10.2	12.9	6.3
07	0.0-7.2	0.0-7.2	2.9	1.6	0.0-9.0	2.3-18.2	0.0-10.2	12.9	6.3







**Гадаад худалдааны тэнцэл**  
**Trade balance**

сая ам. доллараар  
in million USD

Хугацааны эгсэг End-of-period	Экспорт Exports		Үүнгээс худалдааны гол түнш улсуудаар (%) By major trading countries (%)			Импорт Imports		Үүнгээс худалдааны гол түнш улсуудаар (%) By major trading countries (%)		
	дүн amount	жилийн өөрчлөлт % annual changes %	Орос	Хятад	Бусад	дүн amount	жилийн өөрчлөлт % annual changes %	Орос	Хятад	Бусад
			Russia	China	Other			Russia	China	Other
2000 12	466.1	30.1	9.7	58.9	31.5	614.5	19.8	33.6	20.5	46.0
2001 12	521.5	11.9	8.6	45.7	45.7	637.7	3.8	35.4	21.4	43.2
2002 12	524.0	0.5	9.2	42.1	48.8	690.7	8.3	34.4	24.3	41.3
2003 12	615.9	17.5	6.7	46.6	46.7	801.0	16.0	33.1	24.5	42.4
2004 12	869.7	41.2	2.4	47.6	50.0	1 021.1	27.5	33.5	25.2	41.3
2005 12	1 064.9	22.4	2.6	48.1	49.3	1 184.4	16.0	35.3	24.9	39.8
2006 12	1 542.8	44.9	2.9	67.8	29.2	1 485.6	25.4	36.9	27.2	35.9
2007 12	1 889.0	22.4	3.0	74.1	22.8	2 117.3	42.5	34.6	31.3	34.2
2008 12	2 534.5	34.2	3.4	64.5	32.1	3 244.5	53.2	38.3	27.4	34.3
2009 12	1 885.4	-25.6	3.6	73.9	22.5	2 137.7	-34.1	36.2	25.2	38.7
2010 12	2 908.5	54.3	2.7	84.6	12.7	3 200.1	49.7	34.1	31.3	34.7
01	208.6	27.6	2.5	89.9	7.6	348.2	163.8	24.7	28.7	46.6
02	415.9	33.4	2.3	90.0	7.7	615.7	108.1	26.6	23.3	50.1
03	742.1	48.7	2.4	88.8	8.8	1 087.8	88.5	22.6	26.3	51.1
04	1 162.7	59.4	2.1	90.1	7.8	1 584.1	92.5	22.9	28.5	48.6
05	1 578.0	59.4	2.0	90.7	7.3	2 117.6	101.7	22.4	31.1	46.5
06	1 992.8	52.3	1.9	90.8	7.3	2 725.6	101.0	23.8	31.9	44.3
07	2 341.6	52.2	2.0	90.9	7.1	3 442.4	106.2	24.7	31.6	43.7
08	2 889.0	61.1	2.0	89.9	8.1	4 191.1	113.3	24.6	32.0	43.4
09	3 481.7	73.4	2.0	90.6	7.4	4 826.3	114.7	23.9	32.2	43.9
10	3 788.6	66.5	2.0	90.5	7.4	5 352.4	111.2	24.3	31.7	44.1
11	4 303.9	68.7	2.0	90.9	7.0	5 967.3	107.8	24.0	31.2	44.9
2011 12	4 780.4	64.9	2.0	92.1	5.9	6 526.9	99.1	24.5	30.8	44.8
01	240.3	15.2	2.1	89.6	8.3	494.9	42.1	34.5	19.4	46.2
02	529.9	27.4	1.9	91.2	6.9	939.3	52.6	35.6	17.6	46.8
03	883.8	19.1	1.9	92.1	6.0	1 457.9	34.0	31.1	20.8	48.1
04	1 292.4	11.2	1.8	93.0	5.2	2 080.6	31.3	29.5	23.1	47.4
05	1 708.1	8.2	1.6	93.4	5.0	2 648.0	25.0	28.1	24.9	47.0
06	2 262.3	13.5	1.5	94.0	4.5	3 313.3	21.6	27.0	26.7	46.3
07	2 538.0	8.4	1.6	94.1	4.4	3 968.0	15.3	27.5	26.9	45.6
08	2 871.6	-0.6	1.6	93.7	4.7	4 659.5	11.2	27.2	27.9	44.9
09	3 231.6	-7.2	1.7	93.4	4.9	5 245.8	8.7	27.2	28.4	44.4
10	3 664.7	-3.3	1.7	93.2	5.0	5 739.3	7.2	26.8	28.5	44.7
11	4 029.9	-6.4	1.8	92.8	5.4	6 269.1	5.1	26.9	28.2	44.8
2012 12	4 384.6	-8.3	1.8	92.6	5.6	6 738.9	3.2	27.4	27.6	44.9
01	281.6	17.2	1.5	91.0	7.6	498.1	0.7	36.3	16.5	47.2
02	506.1	-4.5	1.4	89.7	8.9	811.2	-13.6	34.5	16.4	49.1
03	809.2	-8.4	1.6	88.9	9.6	1 205.0	-17.3	29.0	19.6	51.5
2013 04	1 212.5	-6.2	1.4	90.3	8.3	1 740.8	-16.3	25.5	21.9	52.7
05	1 643.3	-3.8	1.7	97.1	1.3	2 468.0	-6.8	30.2	26.9	42.9
06	2 023.7	-10.5	1.4	88.0	10.6	3 070.7	-7.3	23.5	25.6	50.9
07	2 353.6	-7.3	1.5	86.0	12.5	3 685.0	-7.1	23.3	26.9	49.8
08	2 703.2	-5.9	1.6	86.9	11.5	4 256.9	-8.6	23.2	28.2	48.6
09	3 097.8	-4.1	1.6	86.1	12.4	4 825.4	-8.0	23.8	29.1	47.1
10	3 480.2	-5.0	1.5	85.6	12.9	5 341.0	-6.9	23.9	29.1	47.0
11	3 861.2	-4.2	1.4	86.2	12.4	5 855.3	-6.6	24.3	28.8	47.0
12	4 272.7	-2.6	0.7	86.8	12.4	6 354.7	-5.7	24.6	28.7	46.7
2014 01	321.2	14.1	0.8	83.6	15.6	337.1	-32.3	27.5	24.1	48.4
02	594.6	17.5	1.1	85.7	13.2	613.9	-24.3	28.5	23.2	48.3
03	986.9	22.0	1.0	87.4	11.5	996.0	-17.3	30.3	26.3	43.4
04	1 432.4	18.1	1.0	90.2	8.7	1 526.2	-12.3	30.0	28.6	41.3
05	1 927.9	17.3	1.0	90.2	8.8	2 131.9	-13.6	28.9	31.2	39.9
06	2 480.8	22.6	0.9	91.9	7.2	2 637.0	-14.1	28.9	32.4	38.7
07	2 940.5	24.9	1.0	90.9	8.1	3 148.1	-14.6	29.1	33.0	37.9
08	3 576.3	32.3	1.0	89.5	9.5	3 599.3	-15.4	29.1	33.8	37.1
09	4 021.8	29.8	1.1	89.7	9.3	4 046.2	-16.1	29.4	34.1	36.5
10	4 605.7	32.3	1.1	87.7	11.2	4 474.3	-16.2	29.6	34.4	36.1
11	5 190.4	34.4	1.1	88.3	10.7	4 832.2	-17.5	29.6	33.9	36.5
12	5 774.6	35.2	1.1	87.9	11.1	5 236.6	-17.6	29.6	33.8	36.7
2015 01	472.7	47.2	3.5	83.2	13.3	247.3	-26.6	29.0	32.8	38.2
02	753.2	26.7	2.8	79.2	18.1	462.4	-24.7	29.8	30.9	39.3
03	1 077.7	9.2	2.4	82.4	15.1	701.7	-29.5	29.9	30.6	39.5
04	1 452.3	1.4	2.2	83.2	14.6	1 034.3	-32.2	27.5	33.5	39.0
05	1 869.3	-3.0	2.0	85.5	12.6	1 447.0	-32.1	26.9	35.0	38.1
06	2 370.2	-4.5	1.9	86.3	11.8	1 838.7	-30.3	26.1	36.3	37.6
07	2 812.8	-4.3	1.8	86.1	12.1	2 208.8	-29.8	26.7	36.4	36.9

Эх үүсвэр: Үндэсний Статистикийн хороо, Статистикийн бюллетень

Source: Monthly Statistical Bulletin, NSC

**Гадаад худалдааны тэнцэл**  
**Trade balance**

үргэлжлэл  
continued

Хугацааны эцэст End-of-period	Гадаад худалдааны тэнцэл Trade balance	Үүнгээс санхүүжилт (импортын эх үүсвэрээр) Of which financing (imports)			Гадаад худалдааны нийт эргэлт External trade turnover	
		Гадаад зээлийн хөрөнгөөр нийлүүлсэн бараа Commodity supplied by foreign loan	Гадаад тусламжийн бараа Foreign aid commodities	Хөрөнгө оруулалтаар нийлүүлсэн бараа Commodities as foreign investment	дүн amount	жилийн өөрчлөлт annual changes %
2000 12	-148.4	25.0	84.9	69.3	1 080.6	24.1
2001 12	-116.2	25.0	81.3	49.8	1 159.2	7.3
2002 12	-166.8	33.9	49.7	29.6	1 214.7	4.8
2003 12	-187.1	25.5	41.8	99.2	1 387.5	14.2
2004 12	-151.5	52.0	52.5	95.0	1 890.8	36.3
2005 12	-119.5	37.0	29.1	152.6	2 249.2	19.0
2006 12	57.2	16.4	40.3	146.1	3 028.4	34.6
2007 12	-228.3	39.7	42.2	172.8	4 006.3	32.3
2008 12	-710.1	24.1	59.9	259.1	5 779.0	44.2
2009 12	-252.3	35.4	69.8	189.5	4 023.1	-30.4
2010 12	-291.6	15.3	127.2	158.2	6 108.6	51.8
01	-139.6	0.4	8.4	41.7	556.8	88.4
02	-199.8	0.5	17.9	92.2	1 031.5	69.8
03	-345.7	0.8	25.2	189.1	1 830.0	70.0
04	-421.4	0.8	36.9	267.0	2 746.8	77.0
05	-539.5	1.3	54.6	352.2	3 695.6	81.2
06	-732.8	1.3	65.7	462.7	4 718.3	77.1
07	-1100.7	1.4	69.8	605.4	5 784.0	80.3
08	-1302.1	1.6	93.4	772.5	7 080.1	88.4
09	-1344.6	2.2	125.0	912.5	8 308.0	95.2
10	-1563.7	2.3	128.9	995.1	9 141.0	90.0
11	-1663.4	2.5	131.6	1117.9	10 271.2	89.4
2011 12	-1746.5	7.7	144.3	1194.5	11 307.2	83.1
01	-254.6	0.3	13.7	69.0	735.2	32.0
02	-409.4	0.3	23.8	152.6	1 469.3	42.4
03	-574.1	0.7	35.6	206.4	2 341.7	28.0
04	-788.2	1.0	46.5	269.7	3 373.1	22.8
05	-939.9	2.1	57.2	343.2	4 356.1	17.9
06	-1051.0	3.1	77.5	413.8	5 575.6	18.2
07	-1430.0	4.0	84.2	464.3	6 506.0	12.5
08	-1788.0	5.6	95.7	549.0	7 531.1	6.4
09	-2014.2	6.3	109.1	588.1	8 477.4	2.0
10	-2074.6	6.8	119.9	627.3	9 404.0	2.9
11	-2239.2	7.1	124.5	666.9	10 298.9	0.3
2012 12	-2354.3	7.2	128.7	702.9	11 123.5	-1.6
01	-216.5	0.1	7.8	39.1	779.7	6.1
02	-305.2	0.1	9.8	72.4	1 317.3	-10.3
03	-395.8	0.3	15.3	104.4	2 014.2	-14.0
2013 04	-528.3	3.6	22.2	135.8	2 953.3	-12.4
05	-824.7	5.7	32.9	162.2	4 111.3	-5.6
06	-1047.0	6.4	36.7	195.1	5 094.5	-8.6
07	-1331.4	7.3	47.2	236.5	6 038.7	-7.2
08	-1553.6	7.5	60.1	260.8	6 960.1	-7.6
09	-1727.6	9.5	66.1	282.7	7 923.3	-6.5
10	-1860.8	11.8	71.4	298.3	8 821.2	-6.2
11	-1994.1	14.4	75.1	324.7	9 716.4	-5.7
12	-2082.0	17.1	80.1	336.9	10 627.4	-4.5
2014 01	-15.9	1.7	1.5	7.8	658.3	-15.6
02	-19.3	1.9	13.4	22.6	1 208.5	-8.3
03	-9.1	5.7	16.6	39.2	1 982.9	-1.6
04	-93.7	7.4	33.5	57.7	2 958.6	0.2
05	-204.0	10.8	38.8	108.0	4 059.8	-1.3
06	-156.1	17.1	43.4	135.6	5 117.8	0.5
07	-207.6	22.7	46.6	153.9	6 088.6	0.8
08	-23.0	26.8	58.2	176.4	7 175.6	3.1
09	-24.4	36.3	61.9	193.7	8 068.1	1.8
10	131.4	39.1	64.1	213.0	9 080.0	2.9
11	358.2	66.9	40.4	238.5	10 022.6	3.2
12	537.9	40.6	69.5	264.1	11 011.2	3.6
2015 01	225.4	0.2	1.1	14.2	720.0	9.4
02	290.9	0.6	1.5	26.7	1 215.6	0.6
03	376.0	2.7	3.8	35.9	1 779.5	-10.3
04	418.0	12.9	7.2	50.7	2 486.5	-16.0
05	422.3	35.3	26.3	73.4	3 316.3	-18.3
06	531.5	38.8	31.8	94.4	4 208.9	-17.8
07	604.0	43.3	33.6	117.7	5 021.7	-17.5









**Үнэт цаасны зах зээлийн байдал**  
**Securities market developments**

Хугацааны эцэст End-of-period	Арилжаа явагдсан өдрийн тоо  Number of trading day	Үнэт цаас нь бүртгэгдсэн компанийн тоо  Number of listed companies	Үүнээс Of which		Үнэт цаасны арилжаанд оролцсон компанийн тоо  Number of trading companies	Бүртгэлтэй үнэт цаасны тоо (сая шир)  Listed stocks (in millions of number)	Зах зээлийн нийт үнэлгээ Market capitalisation	
			Төрийн өмчийн орлоцоотой  State owned				сая төгрөгөөр  in millions of togrog	сая ам доллараар  in millions of USD
2000 12	21	410	69	125	273.5	40482.8	36.9	
2001 12	21	400	59	88	274.3	41283.3	37.5	
2002 12	22	403	61	134	657.3	35847.6	31.9	
2003 12	23	402	68	117	1 124.6	49 513.4	42.4	
2004 12	23	395	67	69	2 014.7	29 966.4	24.8	
2005 12	22	392	66	108	2 161.3	55 701.0	45.6	
2006 12	21	387	60	117	2 270.8	131 179.1	112.6	
2007 12	21	384	56	143	2 491.1	717 560.9	613.3	
2008 12	23	376	33	50	2 951.7	515 872.4	407.0	
2009 12	23	358	31	58	3 097.0	620 705.7	430.2	
2010 12	23	336	22	69	2 685.6	1 373 946.2	1092.9	
01	21	336	22	73	2 685.6	2 257 300.0	1812.4	
02	18	336	29	81	2 685.6	3 491 792.2	2783.4	
03	22	336	29	92	2 686.9	2 455 297.9	2054.2	
04	21	336	29	89	2 686.9	2 104 769.3	1672.5	
05	22	335	29	85	2 686.9	1 803 871.3	1448.5	
06	21	334	29	82	2 686.3	1 991 133.0	1578.6	
07	18	334	29	82	2 686.3	2 155 869.0	1723.0	
08	23	334	29	84	2 732.4	2 055 532.7	1646.2	
09	22	334	29	71	2 784.6	2 003 027.4	1558.0	
10	21	334	29	80	2 786.3	2 287 492.9	1762.8	
11	22	332	29	101	2 786.0	2 155 799.3	1607.7	
2011 12	21	332	29	102	2 785.5	2 168 570.0	1553.0	
01	22	332	29	112	2 785.5	1 992 546.8	1458.4	
02	19	332	29	112	2 785.5	2 112 021.7	1584.2	
03	21	332	29	111	2 992.5	2 025 990.8	1536.2	
04	21	332	29	98	3 038.6	1 907 907.1	1448.9	
05	23	331	29	98	3 038.5	1 830 858.2	1391.2	
06	19	331	29	93	3 038.5	1 895 195.5	1412.0	
07	19	330	29	27	3 038.5	1 934 876.3	1434.2	
08	23	330	29	48	3 038.5	1 772 698.9	1282.7	
09	20	330	29	65	3 038.6	1 771 544.0	1270.4	
10	23	330	29	69	3 038.8	1 660 643.5	1188.5	
11	20	330	29	78	3 038.8	1 588 735.3	1137.0	
2012 12	20	329	29	96	4 779.3	1 799 898.9	1292.9	
01	23	329	29	96	4 779.7	1 762 239.1	1265.5	
02	18	329	29	78	4 779.7	1 737 214.5	1239.0	
03	20	329	29	73	4 779.7	1 564 385.1	1109.2	
2013 04	22	328	29	86	4 739.7	1 320 439.8	919.4	
05	23	327	29	92	4 739.6	1 373 838.9	952.6	
06	19	326	29	91	4 739.4	1 437 737.3	994.2	
07	21	321	29	83	4 690.7	1 421 658.3	948.0	
08	22	262	18	77	4 679.8	1 345 129.0	831.9	
09	21	262	18	89	4 682.0	1 400 997.0	846.3	
10	23	262	18	93	4 682.0	1 541 501.6	898.2	
11	20	262	18	88	4 682.0	1 556 875.5	893.9	
12	22	261	18	86	4 682.0	1 670 531.2	1006.7	
2014 01	21	249	17	92	4 677.7	1 623 963.8	942.4	
02	20	249	17	78	4 744.7	1 661 276.9	948.0	
03	21	249	17	82	4 744.7	1 640 331.8	920.2	
04	22	249	17	79	4 744.7	1 599 573.4	890.6	
05	22	248	17	78	4 744.1	1 516 878.5	834.1	
06	21	248	17	75	4 744.1	1 572 314.2	861.2	
07	20	246	16	84	4 750.7	1 602 377.9	857.0	
08	21	246	16	61	4 756.7	1 625 530.8	897.6	
09	22	245	16	77	4 756.6	1 585 243.8	860.9	
10	23	244	16	60	4 756.3	1 557 398.1	836.2	
11	20	237	15	61	4 754.6	1 466 111.9	776.2	
12	22	237	15	51	4 754.6	1 442 655.4	763.9	
2015 01	21	237	21	62	4 927.2	1 378 363.1	708.8	
02	18	237	21	66	4 927.2	1 365 432.4	691.5	
03	22	237	21	72	4 927.2	1 311 053.1	660.6	
04	22	238	21	73	4 927.3	1 281 492.5	653.7	
05	21	237	21	63	4 927.3	1 253 898.7	657.4	
06	21	237	21	69	4 928.3	1 408 502.5	717.3	
07	20	236	21	54	4 972.4	1 327 096.8	668.5	

Эх үүсвэр: Монголын хөрөнгийн бирж, Сарын мэдээ

Source: Monthly Report, Mongolian Stock Exchange

