

The International Scientific Conference
“Mongolia-Korea Cooperation : Present and Future”

Current Status and Plan for Cooperation in the mining sector of Mongolia



Mongolia Representative Office
Korea Mine Rehabilitation and Mineral Resources Corp.

Sunwoo CHUNG

Oct. 27th 2023, Ulaanbaatar

I. About KOMIR

- **KOMIR, the governmental agency for the sustainable development in mining sector ;**
 - ✓ based on **the Korea law no. 17919**(Mar. 2021)
“Korea Mine Rehabilitation and Mineral Resources Corporation Act”
 - ✓ established in Sep. 2021 by **the merger of two governmental agencies, MIRECO & KORES**



+

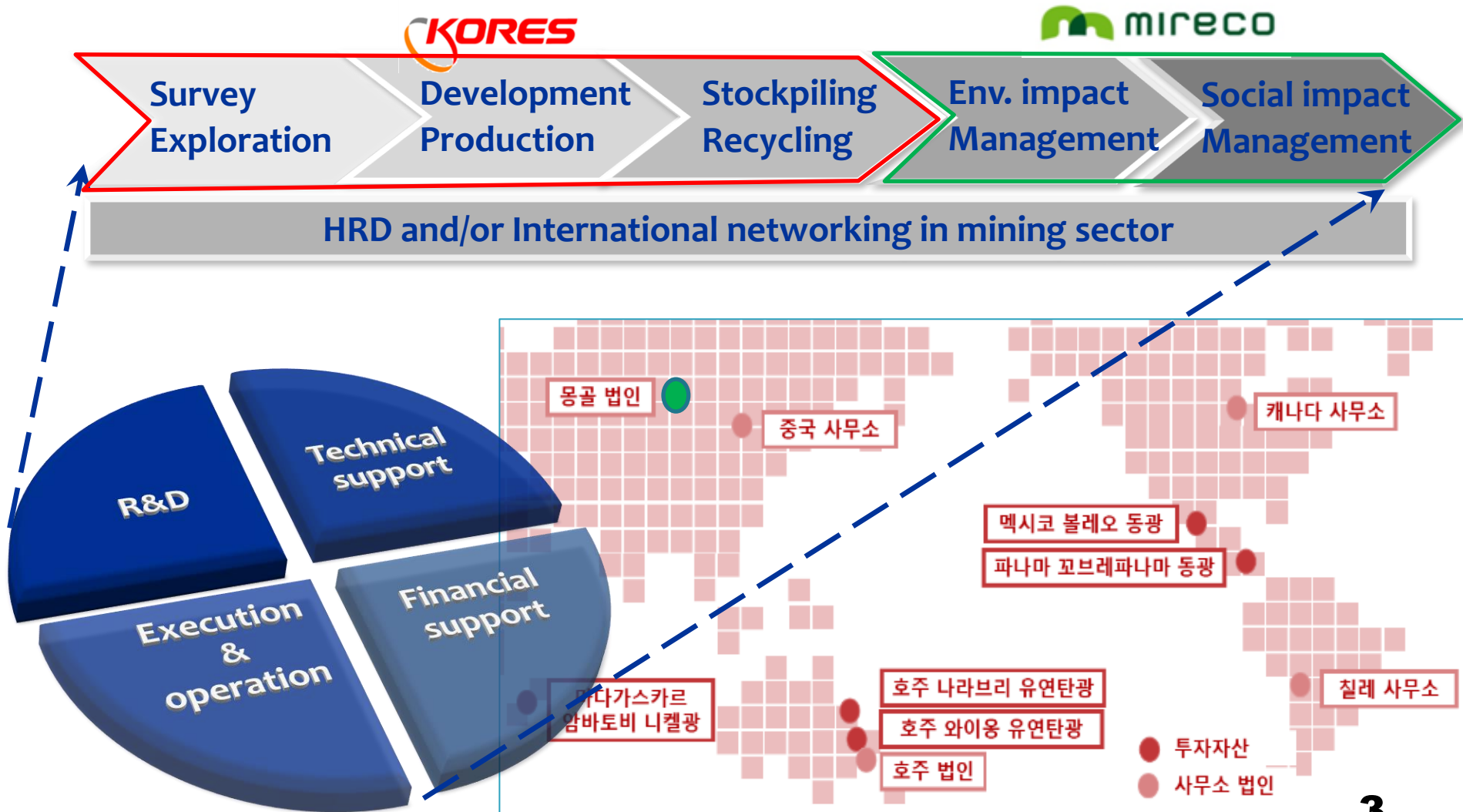


=



I. About KOMIR

■ KOMIR's service portfolio



I. About KOMIR

■ KOMIR's service portfolio



Collection / Analysis / Provision of information

Led by
KOMIR

Basic geo-survey &
exploration

Operation and
equity investment

- Executing ODA Projects
- HRD program for int'l officials

By the
request
of priv.

Technical and
financial support

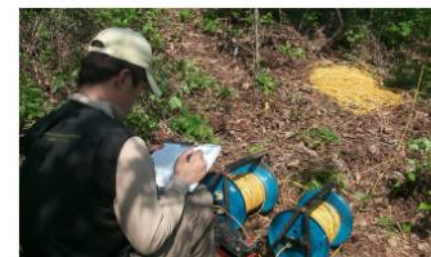
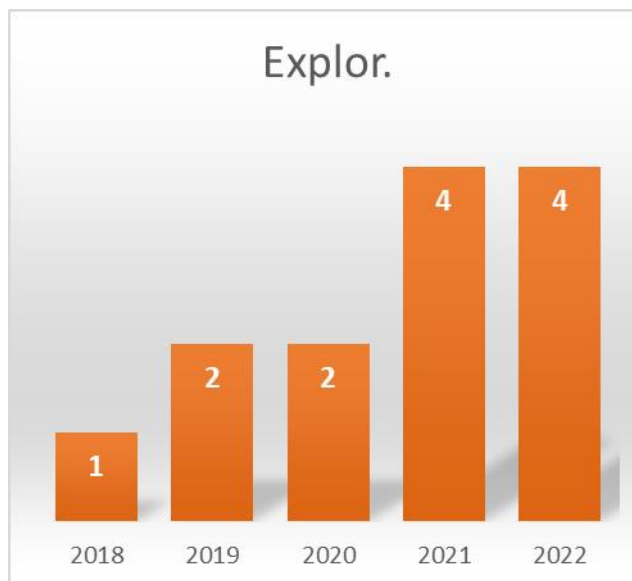
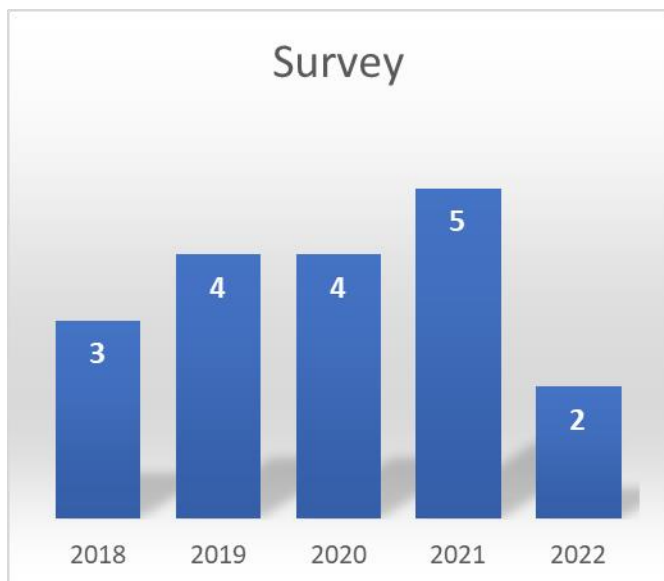
Consultancy

II. Current activities : Geo-survey and Exploration



■ Technical and financial support for private enterprises to develop mineral resources

✓ 31 cases in Mongolia for recent 5 years (2018-2022)



정밀조사



탐광시추

II. Current activities : Sustainable mining model



■ Sustainable mining model for Mongolia (**ODAs**)

<i>[Phase I] Recognition</i>	<i>[Phase II] Planning</i>	<i>[Phase III] Practice</i>
2010-2013 (3mil. USD)	2014-2021 (6mil. USD)	2024-2029 (10mil. USD)
<p>The basic investigation and establishment of the information system for mine damage management</p> 	<p>Establishment of the Master plan and capacity building for mine damage management</p> 	<p>Restoring abandoned mining area and transferring into the Green industry</p> 

II. Current activities : Sustainable mining model



■ Restoring abandoned mining area and transferring into Green industry(ODA)

✓ 2024 - 2029 / 10 Mil. USD granted by KOICA

✓ Nalaikh abandoned coal mine / 10 ha

✓ [Mine rehab.] preventing from ground subsidence and restoring lands from soil contamination

✓ [Green industry] Agro-forest facilities including the tree nursery and smart farm and an urban landscaping facility or park for citizen

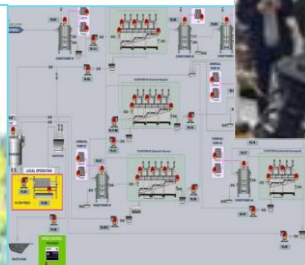
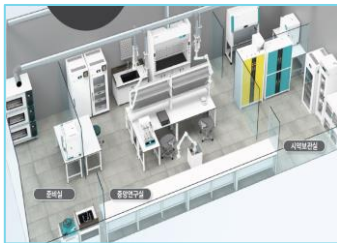
✓ [HRD prog.] capacity building programs such as nurturing experts for operating above facilities and establishing manuals for those



II. Current activities : Value-added



- Establishment of the Rare Metal Research Centre (**ODA**)
 - ✓ 2023 - 2027 / 7 Mil. USD granted by **MOTIE(KIAT)**
 - ✓ Improving and setting up the lab for R&D of processing, smelting, etc.
 - ✓ Operating capacity building programs including incubating Kor-Mon JVs



II. Current activities : Related to the infrastructure

Survey Exploration Development Production Stockpiling Recycling Env. impact Management Social impact Management

HRD and/or International networking in mining sector

- Establishment of a master plan for the infrastructure construction and financing of mineral resources development



- ✓ 2013 – 2016 / 2 Mil. USD granted by KOICA
- ✓ Executed by KOTI, KOMIR, Soosung Engineering Co. Ltd., etc.

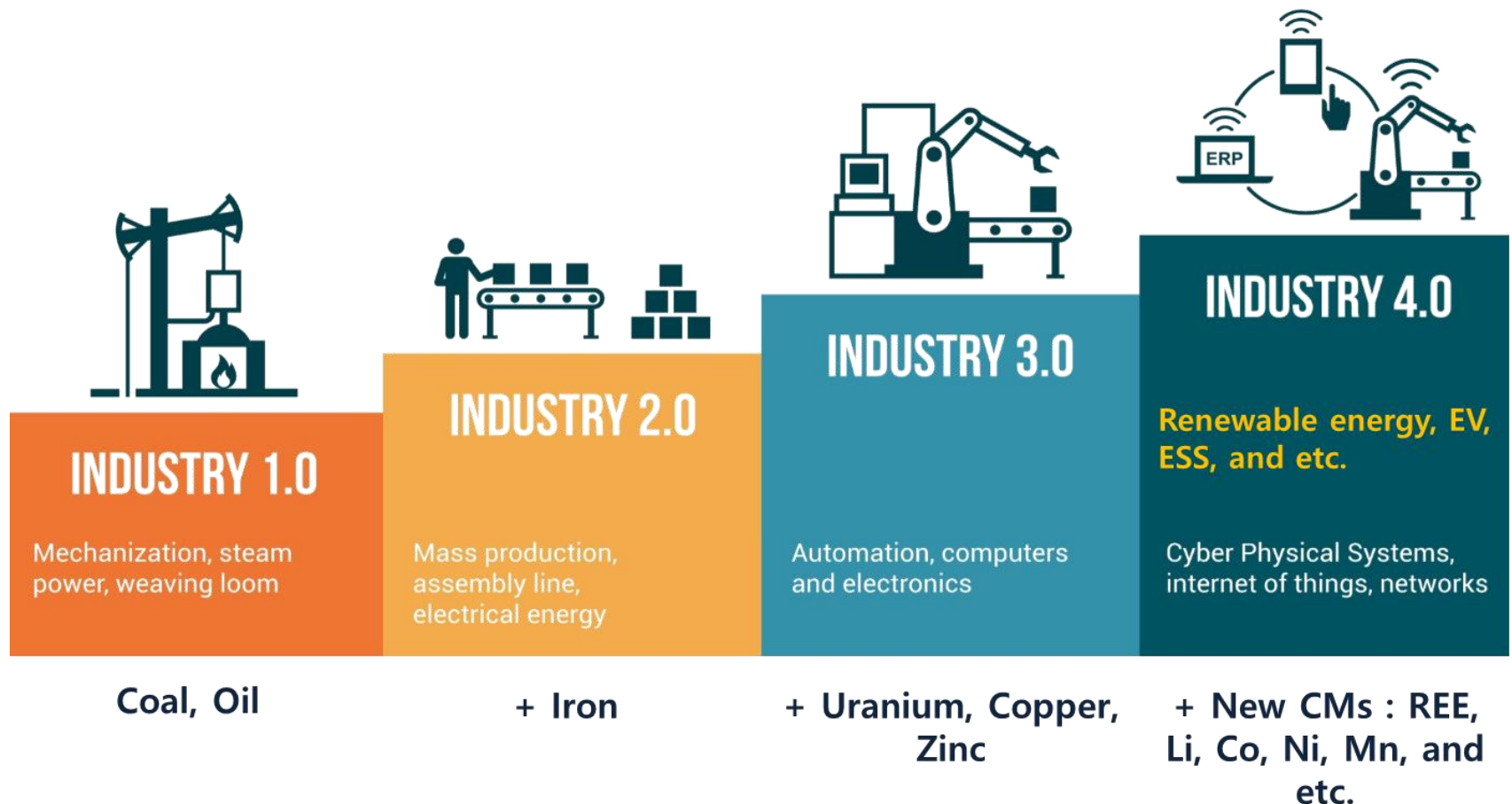
- Strategy for Strengthening Railway Connectivity in East Asia



- ✓ 2021 – 2024 / 2.3 Mil. USD granted by MOLIT
- ✓ Executed by KOTI, KIGAM, Yooshin, KORAIL

III. Proposal and plan for cooperation

■ Industry trend



III. Proposal and plan for cooperation

- **Korea's way on strengthening the supply chain of critical minerals**
 - ✓ Resources Development Master Plan (2020)
 - ✓ Rare Metals Industry Development Plan 2.0 (2021)
 - ✓ Critical Minerals Securing Strategy (2023)



❖ Strategic Critical Minerals of KOR



III. Proposal and plan for cooperation

■ Activating Value-added activities in mining sector

- ✓ “Industrialization recovery” in mining sector ; Mineral processing-smelting facilities, and promoting the recycling industry for tailings from metal mines, abandoned renewable energy facilities and secondary batteries, etc.
- ✓ Overcoming the limitation and Improving efficiency of long-distance transportation

■ Transferring into other industry after mine closure

- ✓ Recovery of contaminated land from mining activities and reuse for commercial purposes, agricultural development based on smart technology, improvement of human competency along to the policy of Mongolia

감사합니다

csw@komir.or.kr

+976-7011-7721
